



INDEX

SECTION 9 - FIBERGLASS GUY STRAIN INSULATORS

CATALOG NUMBER SYSTEM ----- 9-0

FIBERGLASS GUY STRAIN INSULATORS 15,000 POUND RATING CLEVIS THIMBLE EYE ----- 9-1

FIBERGLASS GUY STRAIN INSULATORS 21,000 POUND RATING CLEVIS THIMBLE EYE ----- 9-2

FIBERGLASS GUY STRAIN INSULATORS 30,000 POUND RATING CLEVIS THIMBLE EYE ----- 9-3

FIBERGLASS GUY STRAIN INSULATORS 15,000 POUND RATING CLEVIS THIMBLE ----- 9-4

FIBERGLASS GUY STRAIN INSULATORS 21,000 POUND RATING CLEVIS THIMBLE ----- 9-5

FIBERGLASS GUY STRAIN INSULATORS 30,000 POUND RATING CLEVIS THIMBLE ----- 9-6

FIBERGLASS GUY STRAIN INSULATORS 15,000 POUND RATING CLEVIS CLEVIS ROLLER ----- 9-7

FIBERGLASS GUY STRAIN INSULATORS 21,000 POUND RATING CLEVIS CLEVIS ROLLER ----- 9-8

FIBERGLASS GUY STRAIN INSULATORS 30,000 POUND RATING CLEVIS CLEVIS ROLLER ----- 9-9

FIBERGLASS GUY STRAIN INSULATORS 30,000 POUND RATING CLEVIS CLEVIS ROLLER ----- 9-9A

FIBERGLASS GUY STRAIN INSULATORS 15,000 POUND RATING THIMBLE EYE THIMBLE EYE --- 9-10

FIBERGLASS GUY STRAIN INSULATORS 21,000 POUND RATING THIMBLE EYE THIMBLE EYE --- 9-11

FIBERGLASS GUY STRAIN INSULATORS 30,000 POUND RATING THIMBLE EYE THIMBLE EYE --- 9-12

FIBERGLASS GUY STRAIN INSULATORS 15,000 POUND RATING THIMBLE THIMBLE ----- 9-13

FIBERGLASS GUY STRAIN INSULATORS 21,000 POUND RATING THIMBLE THIMBLE ----- 9-14

FIBERGLASS GUY STRAIN INSULATORS 30,000 POUND RATING THIMBLE THIMBLE ----- 9-15



Catalog Number System

GL 15 - 12 C - T

Catalog Series
Fiberglass Guy
Strain Insulators

Minimum Ultimate
Strength Rating (lbs.)
15 = 15,000
21 = 21,000
30 = 30,000

Nominal Length
12 = 12"
18 = 18"
24 = 24"
36 = 36"
42 = 42"
54 = 54"
60 = 60"
78 = 78"
96 = 96"
120 = 120"
144 = 144"

End Fitting, 2nd
C = Clevis
CR = Clevis with Roller
TE = Thimble Eye
T = Thimble
E = Eye

End Fitting, 1st
C = Clevis
CR = Clevis with Roller
TE = Thimble Eye
T = Thimble
E = Eye



Thimble



Clevis with Roller



Eye



Clevis



Thimble Eye



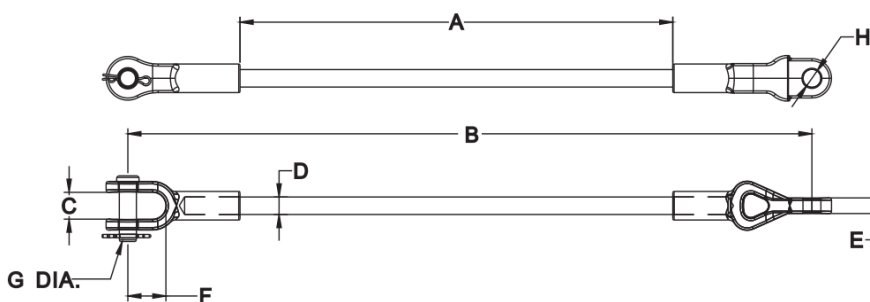
FIBERGLASS GUY STRAIN INSULATORS

**15,000 Pound Rating:
Clevis & Thimble Eye**



SPECIFICATIONS:

FITTINGS: DUCTILE IRON HOT DIP GALVANIZED ASTM-A-153
FIBERGLASS ROD: PROPRIETARY VEILED GRAY POLYESTER WITH ADDED ULTRAVIOLET PROTECTION
HARDWARE: STEEL HOT DIP GALVANIZED ASTM-A-153
COTTER PIN: STAINLESS STEEL



CATALOG NUMBER	DIMENSION(INCHES)								STRENGTH (Lbs.)	FITTINGS	WEIGHT PER 100 (LBS)
	A	B	C	D	E	F	G	H			
GL15-12C-TE	12	20.62	0.88	0.625	0.531	1.418	0.625	0.69	15,000	Clevis-Thimble Eye	256
GL15-18C-TE	18	26.62	0.88	0.625	0.531	1.418	0.625	0.69	15,000	Clevis-Thimble Eye	271
GL15-24C-TE	24	32.62	0.88	0.625	0.531	1.418	0.625	0.69	15,000	Clevis-Thimble Eye	286
GL15-36C-TE	36	44.62	0.88	0.625	0.531	1.418	0.625	0.69	15,000	Clevis-Thimble Eye	315
GL15-42C-TE	42	50.62	0.88	0.625	0.531	1.418	0.625	0.69	15,000	Clevis-Thimble Eye	330
GL15-54C-TE	54	62.62	0.88	0.625	0.531	1.418	0.625	0.69	15,000	Clevis-Thimble Eye	361
GL15-60C-TE	60	68.62	0.88	0.625	0.531	1.418	0.625	0.69	15,000	Clevis-Thimble Eye	376
GL15-78C-TE	78	86.62	0.88	0.625	0.531	1.418	0.625	0.69	15,000	Clevis-Thimble Eye	421
GL15-96C-TE	96	104.62	0.88	0.625	0.531	1.418	0.625	0.69	15,000	Clevis-Thimble Eye	467
GL15-120C-TE	120	128.62	0.88	0.625	0.531	1.418	0.625	0.69	15,000	Clevis-Thimble Eye	527
GL15-144C-TE	144	152.62	0.88	0.625	0.531	1.418	0.625	0.69	15,000	Clevis-Thimble Eye	589

To add Roller to Clevis, use suffix "CR"(For example GL15-12CR-TE)

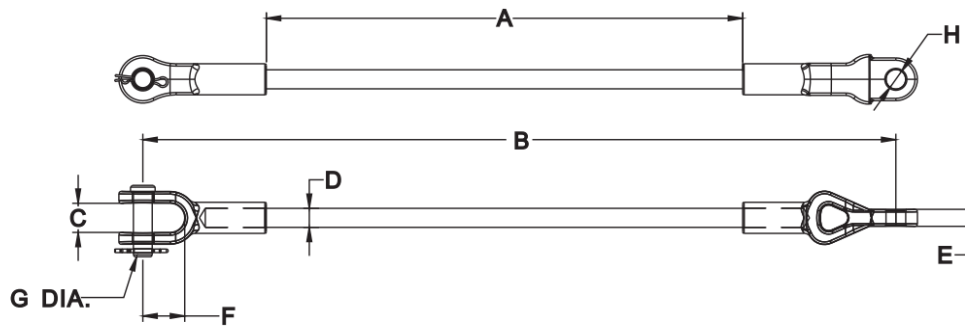
FIBERGLASS GUY STRAIN INSULATORS

**21,000 Pound Rating:
Clevis & Thimble Eye**



SPECIFICATIONS:

FITTINGS: DUCTILE IRON HOT DIP GALVANIZED ASTM-A-153
 FIBERGLASS ROD: PROPRIETARY VEILED GRAY POLYESTER WITH ADDED ULTRAVIOLET PROTECTION
 HARDWARE: STEEL HOT DIP GALVANIZED ASTM-A-153
 COTTER PIN: STAINLESS STEEL



CATALOG NUMBER	DIMENSION(INCHES)								STRENGTH (Lbs.)	FITTINGS	WEIGHT PER 100 (LBS)
	A	B	C	D	E	F	G	H			
GL21-12C-TE	12	20.93	0.88	0.625	0.688	1.418	0.625	0.69	21,000	Clevis-Thimble Eye	278
GL21-18C-TE	18	26.93	0.88	0.625	0.688	1.418	0.625	0.69	21,000	Clevis-Thimble Eye	293
GL21-24C-TE	24	32.93	0.88	0.625	0.688	1.418	0.625	0.69	21,000	Clevis-Thimble Eye	308
GL21-36C-TE	36	44.93	0.88	0.625	0.688	1.418	0.625	0.69	21,000	Clevis-Thimble Eye	337
GL21-42C-TE	42	50.93	0.88	0.625	0.688	1.418	0.625	0.69	21,000	Clevis-Thimble Eye	353
GL21-54C-TE	54	62.93	0.88	0.625	0.688	1.418	0.625	0.69	21,000	Clevis-Thimble Eye	384
GL21-60C-TE	60	68.93	0.88	0.625	0.688	1.418	0.625	0.69	21,000	Clevis-Thimble Eye	399
GL21-78C-TE	78	86.93	0.88	0.625	0.688	1.418	0.625	0.69	21,000	Clevis-Thimble Eye	443
GL21-96C-TE	96	104.93	0.88	0.625	0.688	1.418	0.625	0.69	21,000	Clevis-Thimble Eye	489
GL21-120C-TE	120	128.93	0.88	0.625	0.688	1.418	0.625	0.69	21,000	Clevis-Thimble Eye	549
GL21-144C-TE	144	152.93	0.88	0.625	0.688	1.418	0.625	0.69	21,000	Clevis-Thimble Eye	610

To add Roller to Clevis, use suffix "CR"(For example GL21-12CR-TE)



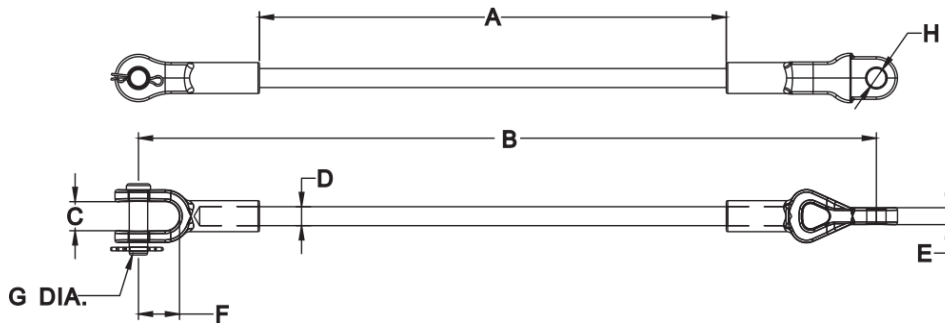
FIBERGLASS GUY STRAIN INSULATORS

**30,000 Pound Rating:
Clevis & Thimble Eye**



SPECIFICATIONS:

FITTINGS: DUCTILE IRON HOT DIP GALVANIZED ASTM-A-153
FIBERGLASS ROD: PROPRIETARY VEILED GRAY POLYESTER WITH ADDED ULTRAVIOLET PROTECTION
HARDWARE: STEEL HOT DIP GALVANIZED ASTM-A-153
COTTER PIN: STAINLESS STEEL



CATALOG NUMBER	DIMENSION(INCHES)								STRENGTH (Lbs.)	FITTINGS	WEIGHT PER 100 (LBS)
	A	B	C	D	E	F	G	H			
GL30-12C-TE	12	23.7	1.024	0.75	0.886	2.04	0.75	0.811	30,000	Clevis-Thimble Eye	591
GL30-18C-TE	18	29.7	1.024	0.75	0.886	2.04	0.75	0.811	30,000	Clevis-Thimble Eye	612
GL30-24C-TE	24	35.7	1.024	0.75	0.886	2.04	0.75	0.811	30,000	Clevis-Thimble Eye	633
GL30-36C-TE	36	47.7	1.024	0.75	0.886	2.04	0.75	0.811	30,000	Clevis-Thimble Eye	675
GL30-42C-TE	42	53.7	1.024	0.75	0.886	2.04	0.75	0.811	30,000	Clevis-Thimble Eye	695
GL30-54C-TE	54	65.7	1.024	0.75	0.886	2.04	0.75	0.811	30,000	Clevis-Thimble Eye	737
GL30-60C-TE	60	71.7	1.024	0.75	0.886	2.04	0.75	0.811	30,000	Clevis-Thimble Eye	758
GL30-78C-TE	78	89.7	1.024	0.75	0.886	2.04	0.75	0.811	30,000	Clevis-Thimble Eye	820
GL30-96C-TE	96	107.7	1.024	0.75	0.886	2.04	0.75	0.811	30,000	Clevis-Thimble Eye	882
GL30-120C-TE	120	131.7	1.024	0.75	0.886	2.04	0.75	0.811	30,000	Clevis-Thimble Eye	966
GL30-144C-TE	144	155.7	1.024	0.75	0.886	2.04	0.75	0.811	30,000	Clevis-Thimble Eye	1049

To add Roller to Clevis, use suffix "CR"(For example GL30-12CR-TE)



FIBERGLASS GUY STRAIN INSULATORS

15,000 Pound Rating: Clevis & Thimble



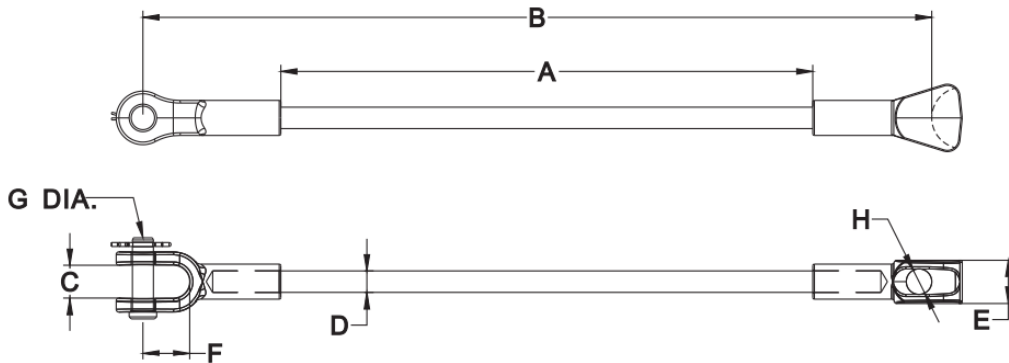
SPECIFICATIONS:

FITTINGS: DUCTILE IRON HOT DIP GALVANIZED ASTM-A-153

FIBERGLASS ROD: PROPRIETARY VEILED GRAY POLYESTER WITH ADDED ULTRAVIOLET PROTECTION

HARDWARE: STEEL HOT DIP GALVANIZED ASTM-A-153

COTTER PIN: STAINLESS STEEL



CATALOG NUMBER	DIMENSION(INCHES)								STRENGTH (Lbs.)	FITTINGS	WEIGHT PER 100 (LBS)
	A	B	C	D	E	F	G	H			
GL15-12C-T	12	20.1	0.88	0.625	1.25	1.418	0.625	0.75	15,000	Clevis-Thimble	274
GL15-18C-T	18	26.1	0.88	0.625	1.25	1.418	0.625	0.75	15,000	Clevis-Thimble	289
GL15-24C-T	24	32.1	0.88	0.625	1.25	1.418	0.625	0.75	15,000	Clevis-Thimble	304
GL15-36C-T	36	44.1	0.88	0.625	1.25	1.418	0.625	0.75	15,000	Clevis-Thimble	334
GL15-42C-T	42	50.1	0.88	0.625	1.25	1.418	0.625	0.75	15,000	Clevis-Thimble	349
GL15-54C-T	54	62.1	0.88	0.625	1.25	1.418	0.625	0.75	15,000	Clevis-Thimble	379
GL15-60C-T	60	68.1	0.88	0.625	1.25	1.418	0.625	0.75	15,000	Clevis-Thimble	394
GL15-78C-T	78	86.1	0.88	0.625	1.25	1.418	0.625	0.75	15,000	Clevis-Thimble	440
GL15-96C-T	96	104.1	0.88	0.625	1.25	1.418	0.625	0.75	15,000	Clevis-Thimble	485
GL15-120C-T	120	128.1	0.88	0.625	1.25	1.418	0.625	0.75	15,000	Clevis-Thimble	545
GL15-144C-T	144	152.1	0.88	0.625	1.25	1.418	0.625	0.75	15,000	Clevis-Thimble	606

To add Roller to Clevis, use suffix "CR"(For example GL15-12CR-T)



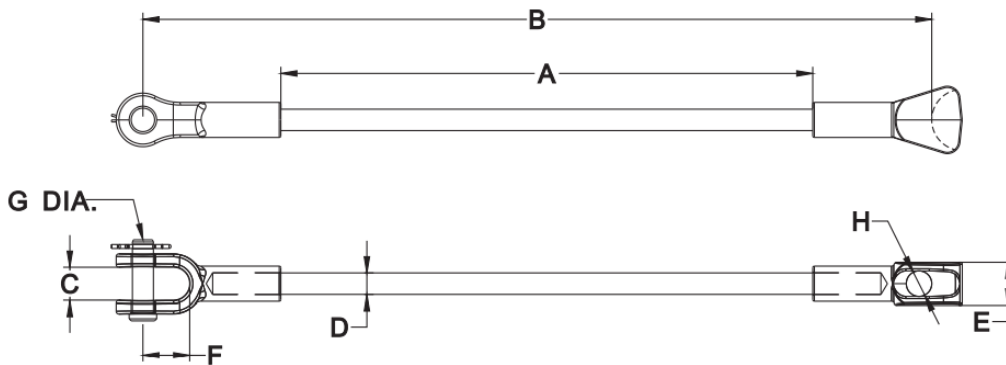
FIBERGLASS GUY STRAIN INSULATORS

**21,000 Pound Rating:
Clevis & Thimble**



SPECIFICATIONS:

FITTINGS: DUCTILE IRON HOT DIP GALVANIZED ASTM-A-153
 FIBERGLASS ROD: PROPRIETARY VEILED GRAY POLYESTER WITH ADDED ULTRAVIOLET PROTECTION
 HARDWARE: STEEL HOT DIP GALVANIZED ASTM-A-153
 COTTER PIN: STAINLESS STEEL



CATALOG NUMBER	DIMENSION(INCHES)								STRENGTH (Lbs.)	FITTINGS	WEIGHT PER 100 (LBS)
	A	B	C	D	E	F	G	H			
GL21-12C-T	12	20.3	0.88	0.625	1.443	1.418	0.625	0.89	21,000	Clevis-Thimble	274
GL21-18C-T	18	26.3	0.88	0.625	1.443	1.418	0.625	0.89	21,000	Clevis-Thimble	289
GL21-24C-T	24	32.3	0.88	0.625	1.443	1.418	0.625	0.89	21,000	Clevis-Thimble	304
GL21-36C-T	36	44.3	0.88	0.625	1.443	1.418	0.625	0.89	21,000	Clevis-Thimble	334
GL21-42C-T	42	50.3	0.88	0.625	1.443	1.418	0.625	0.89	21,000	Clevis-Thimble	349
GL21-54C-T	54	62.3	0.88	0.625	1.443	1.418	0.625	0.89	21,000	Clevis-Thimble	379
GL21-60C-T	60	68.3	0.88	0.625	1.443	1.418	0.625	0.89	21,000	Clevis-Thimble	394
GL21-78C-T	78	86.3	0.88	0.625	1.443	1.418	0.625	0.89	21,000	Clevis-Thimble	440
GL21-96C-T	96	104.3	0.88	0.625	1.443	1.418	0.625	0.89	21,000	Clevis-Thimble	485
GL21-120C-T	120	128.3	0.88	0.625	1.443	1.418	0.625	0.89	21,000	Clevis-Thimble	545
GL21-144C-T	144	152.3	0.88	0.625	1.443	1.418	0.625	0.89	21,000	Clevis-Thimble	606

To add Roller to Clevis, use suffix"CR"(For example GL21-12CR-T)



FIBERGLASS GUY STRAIN INSULATORS

30,000 Pound Rating: Clevis & Thimble



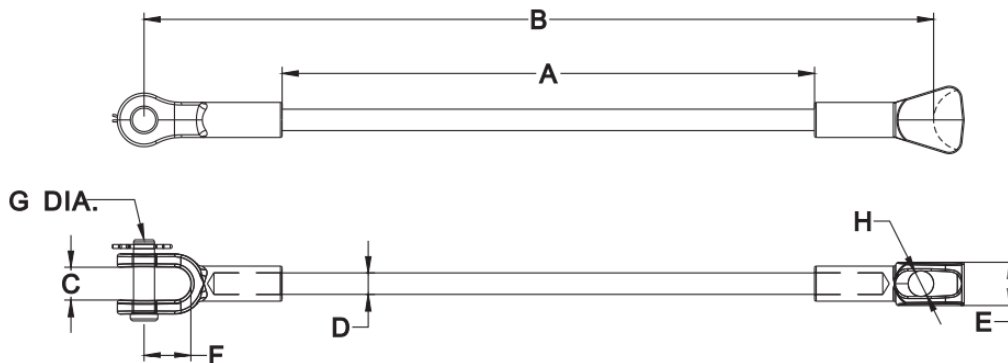
SPECIFICATIONS:

FITTINGS: DUCTILE IRON HOT DIP GALVANIZED ASTM-A-153

FIBERGLASS ROD: PROPRIETARY VEILED GRAY POLYESTER WITH ADDED ULTRAVIOLET PROTECTION

HARDWARE: STEEL HOT DIP GALVANIZED ASTM-A-153

COTTER PIN: STAINLESS STEEL



CATALOG NUMBER	DIMENSION(INCHES)								STRENGTH (Lbs.)	FITTINGS	WEIGHT PER 100 (LBS)
	A	B	C	D	E	F	G	H			
GL30-12C-T	12	21.7	1.024	0.75	1.5	2.04	0.75	0.89	30,000	Clevis-Thimble	558
GL30-18C-T	18	27.7	1.024	0.75	1.5	2.04	0.75	0.89	30,000	Clevis-Thimble	579
GL30-24C-T	24	33.7	1.024	0.75	1.5	2.04	0.75	0.89	30,000	Clevis-Thimble	599
GL30-36C-T	36	45.7	1.024	0.75	1.5	2.04	0.75	0.89	30,000	Clevis-Thimble	641
GL30-42C-T	42	51.7	1.024	0.75	1.5	2.04	0.75	0.89	30,000	Clevis-Thimble	662
GL30-54C-T	54	63.7	1.024	0.75	1.5	2.04	0.75	0.89	30,000	Clevis-Thimble	703
GL30-60C-T	60	69.7	1.024	0.75	1.5	2.04	0.75	0.89	30,000	Clevis-Thimble	724
GL30-78C-T	78	87.7	1.024	0.75	1.5	2.04	0.75	0.89	30,000	Clevis-Thimble	786
GL30-96C-T	96	105.7	1.024	0.75	1.5	2.04	0.75	0.89	30,000	Clevis-Thimble	849
GL30-120C-T	120	129.7	1.024	0.75	1.5	2.04	0.75	0.89	30,000	Clevis-Thimble	932
GL30-144C-T	144	153.7	1.024	0.75	1.5	2.04	0.75	0.89	30,000	Clevis-Thimble	1015

To add Roller to Clevis, use suffix "CR"(For example GL30-12CR-T)



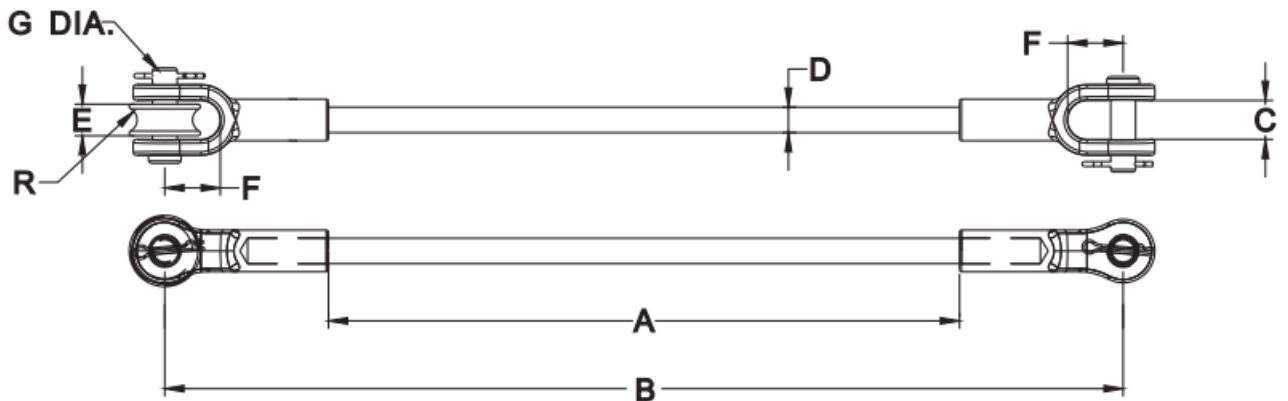
FIBERGLASS GUY STRAIN INSULATORS

**15,000 Pound Rating:
Clevis & Clevis Roller**



SPECIFICATIONS:

FITTINGS: DUCTILE IRON HOT DIP GALVANIZED ASTM-A-153
FIBERGLASS ROD: PROPRIETARY VEILED GRAY POLYESTER WITH ADDED ULTRAVIOLET PROTECTION
HARDWARE: STEEL HOT DIP GALVANIZED ASTM-A-153
COTTER PIN: STAINLESS STEEL



CATALOG NUMBER	DIMENSION(INCHES)								STRENGTH (Lbs.)	FITTINGS	WEIGHT PER 100 (LBS)
	A	B	C	D	E	F	G	R			
GL15-12C-CR	12	20	0.88	0.625	0.76	1.418	0.625	0.31	15,000	Clevis-Clevis Roller	340
GL15-18C-CR	18	26	0.88	0.625	0.76	1.418	0.625	0.31	15,000	Clevis-Clevis Roller	355
GL15-24C-CR	24	32	0.88	0.625	0.76	1.418	0.625	0.31	15,000	Clevis-Clevis Roller	370
GL15-36C-CR	36	44	0.88	0.625	0.76	1.418	0.625	0.31	15,000	Clevis-Clevis Roller	400
GL15-42C-CR	42	50	0.88	0.625	0.76	1.418	0.625	0.31	15,000	Clevis-Clevis Roller	415
GL15-54C-CR	54	62	0.88	0.625	0.76	1.418	0.625	0.31	15,000	Clevis-Clevis Roller	446
GL15-60C-CR	60	68	0.88	0.625	0.76	1.418	0.625	0.31	15,000	Clevis-Clevis Roller	461
GL15-78C-CR	78	86	0.88	0.625	0.76	1.418	0.625	0.31	15,000	Clevis-Clevis Roller	507
GL15-96C-CR	96	104	0.88	0.625	0.76	1.418	0.625	0.31	15,000	Clevis-Clevis Roller	551
GL15-120C-CR	120	128	0.88	0.625	0.76	1.418	0.625	0.31	15,000	Clevis-Clevis Roller	612
GL15-144C-CR	144	152	0.88	0.625	0.76	1.418	0.625	0.31	15,000	Clevis-Clevis Roller	672

To add Roller to Clevis, use suffix "CR"(For example GL15-12CR-CR)



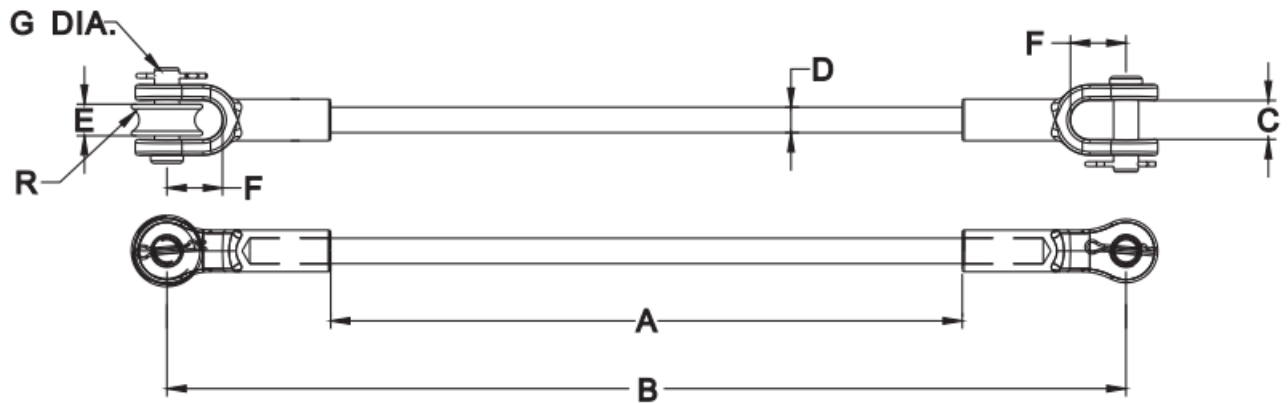
FIBERGLASS GUY STRAIN INSULATORS

**21,000 Pound Rating:
Clevis & Clevis Roller**



SPECIFICATIONS:

FITTINGS: DUCTILE IRON HOT DIP GALVANIZED ASTM-A-153
FIBERGLASS ROD: PROPRIETARY VEILED GRAY POLYESTER WITH ADDED ULTRAVIOLET PROTECTION
HARDWARE: STEEL HOT DIP GALVANIZED ASTM-A-153
COTTER PIN: STAINLESS STEEL



CATALOG NUMBER	DIMENSION(INCHES)								STRENGTH (Lbs.)	FITTINGS	WEIGHT PER 100 (LBS)
	A	B	C	D	E	F	G	R			
GL21-12C-CR	12	20	0.88	0.625	0.76	1.418	0.625	0.31	21,000	Clevis-Clevis Roller	340
GL21-18C-CR	18	26	0.88	0.625	0.76	1.418	0.625	0.31	21,000	Clevis-Clevis Roller	355
GL21-24C-CR	24	32	0.88	0.625	0.76	1.418	0.625	0.31	21,000	Clevis-Clevis Roller	370
GL21-36C-CR	36	44	0.88	0.625	0.76	1.418	0.625	0.31	21,000	Clevis-Clevis Roller	400
GL21-42C-CR	42	50	0.88	0.625	0.76	1.418	0.625	0.31	21,000	Clevis-Clevis Roller	415
GL21-54C-CR	54	62	0.88	0.625	0.76	1.418	0.625	0.31	21,000	Clevis-Clevis Roller	446
GL21-60C-CR	60	68	0.88	0.625	0.76	1.418	0.625	0.31	21,000	Clevis-Clevis Roller	461
GL21-78C-CR	78	86	0.88	0.625	0.76	1.418	0.625	0.31	21,000	Clevis-Clevis Roller	507
GL21-96C-CR	96	104	0.88	0.625	0.76	1.418	0.625	0.31	21,000	Clevis-Clevis Roller	551
GL21-120C-CR	120	128	0.88	0.625	0.76	1.418	0.625	0.31	21,000	Clevis-Clevis Roller	612
GL21-144C-CR	144	152	0.88	0.625	0.76	1.418	0.625	0.31	21,000	Clevis-Clevis Roller	672

To add Roller to Clevis, use suffix"CR"(For example GL21-12CR-CR)



FIBERGLASS GUY STRAIN INSULATORS

30,000 Pound Rating: Clevis & Clevis Roller



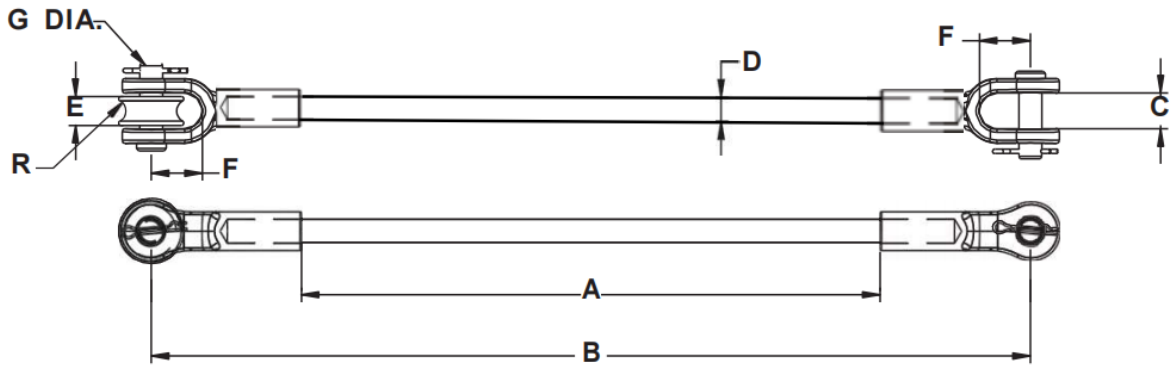
SPECIFICATIONS:

FITTINGS: DUCTILE IRON HOT DIP GALVANIZED ASTM-A-153

FIBERGLASS ROD: PROPRIETARY VEILED GRAY POLYESTER WITH ADDED ULTRAVIOLET PROTECTION

HARDWARE: STEEL HOT DIP GALVANIZED ASTM-A-153

COTTER PIN: STAINLESS STEEL



CATALOG NUMBER	DIMENSION(INCHES)								STRENGTH (Lbs.)	FITTINGS	WEIGHT PER 100 (LBS)
	A	B	C	D	E	F	G	R			
GL30-12C-CR	12	25.1	1.000	0.75	0.81	2.00	0.75	0.31	30,000	Clevis-Clevis Roller	873
GL30-18C-CR	18	31.1	1.000	0.75	0.81	2.00	0.75	0.31	30,000	Clevis-Clevis Roller	892
GL30-24C-CR	24	37.1	1.000	0.75	0.81	2.00	0.75	0.31	30,000	Clevis-Clevis Roller	913
GL30-36C-CR	36	49.1	1.000	0.75	0.81	2.00	0.75	0.31	30,000	Clevis-Clevis Roller	955
GL30-42C-CR	42	55.1	1.000	0.75	0.81	2.00	0.75	0.31	30,000	Clevis-Clevis Roller	976
GL30-54C-CR	54	67.1	1.000	0.75	0.81	2.00	0.75	0.31	30,000	Clevis-Clevis Roller	1017
GL30-60C-CR	60	73.1	1.000	0.75	0.81	2.00	0.75	0.31	30,000	Clevis-Clevis Roller	1038
GL30-78C-CR	78	91.1	1.000	0.75	0.81	2.00	0.75	0.31	30,000	Clevis-Clevis Roller	1100
GL30-96C-CR	96	109.1	1.000	0.75	0.81	2.00	0.75	0.31	30,000	Clevis-Clevis Roller	1163
GL30-120C-CR	120	133.1	1.000	0.75	0.81	2.00	0.75	0.31	30,000	Clevis-Clevis Roller	1246
GL30-144C-CR	144	157.1	1.000	0.75	0.81	2.00	0.75	0.31	30,000	Clevis-Clevis Roller	1329

To add Roller to Clevis, use suffix"CR"(For example GL30-12CR-CR)



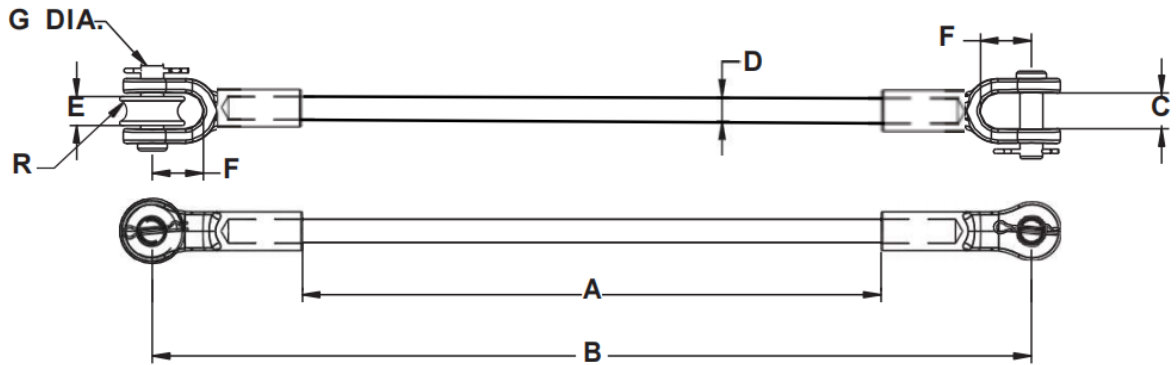
FIBERGLASS GUY STRAIN INSULATORS

36,000 Pound Rating: Clevis & Clevis Roller



SPECIFICATIONS:

FITTINGS: DUCTILE IRON HOT DIP GALVANIZED ASTM-A-153
FIBERGLASS ROD: PROPRIETARY VEILED GRAY POLYESTER WITH ADDED ULTRAVIOLET PROTECTION
HARDWARE: STEEL HOT DIP GALVANIZED ASTM-A-153
COTTER PIN: STAINLESS STEEL



CATALOG NUMBER	DIMENSION(INCHES)								STRENGTH (Lbs)	FITTINGS	WEIGHT PER 100 (LBS)
	A	B	C	D	E	F	G	R			
GL36-12C-CR	12	25.1	1.000	0.813	0.81	2.00	0.75	0.31	36,000	Clevis-Clevis Roller	877
GL36-18C-CR	18	31.1	1.000	0.813	0.81	2.00	0.75	0.31	36,000	Clevis-Clevis Roller	896
GL36-24C-CR	24	37.1	1.000	0.813	0.81	2.00	0.75	0.31	36,000	Clevis-Clevis Roller	917
GL36-36C-CR	36	49.1	1.000	0.813	0.81	2.00	0.75	0.31	36,000	Clevis-Clevis Roller	959
GL36-42C-CR	42	55.1	1.000	0.813	0.81	2.00	0.75	0.31	36,000	Clevis-Clevis Roller	980
GL36-54C-CR	54	67.1	1.000	0.813	0.81	2.00	0.75	0.31	36,000	Clevis-Clevis Roller	1021
GL36-60C-CR	60	73.1	1.000	0.813	0.81	2.00	0.75	0.31	36,000	Clevis-Clevis Roller	1042
GL36-78C-CR	78	91.1	1.000	0.813	0.81	2.00	0.75	0.31	36,000	Clevis-Clevis Roller	1104
GL36-96C-CR	96	109.1	1.000	0.813	0.81	2.00	0.75	0.31	36,000	Clevis-Clevis Roller	1167
GL36-120C-CR	120	133.1	1.000	0.813	0.81	2.00	0.75	0.31	36,000	Clevis-Clevis Roller	1250
GL36-144C-CR	144	157.1	1.000	0.813	0.81	2.00	0.75	0.31	36,000	Clevis-Clevis Roller	1334

To add Roller to Clevis, use suffix "CR"(For example GL36-12CR-CR)

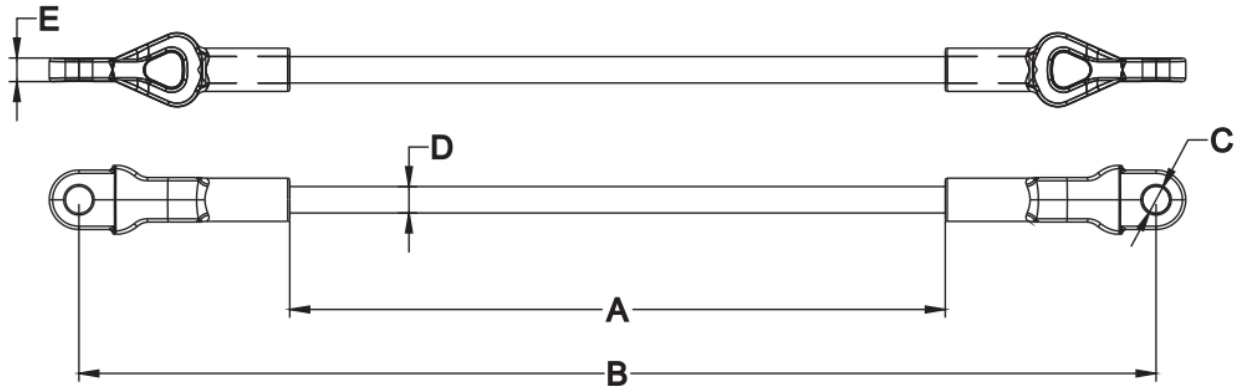
Add "SC" for silicon coating , (for example GLSC-36-12C-CR)

FIBERGLASS GUY STRAIN INSULATORS

15,000 Pound Rating: Thimble Eye & Thimble Eye


SPECIFICATIONS:

FITTINGS: DUCTILE IRON HOT DIP GALVANIZED ASTM-A-153
 FIBERGLASS ROD: PROPRIETARY VEILED GRAY POLYESTER WITH ADDED
 ULTRAVIOLET PROTECTION
 HARDWARE: STEEL HOT DIP GALVANIZED ASTM-A-153
 COTTER PIN: STAINLESS STEEL



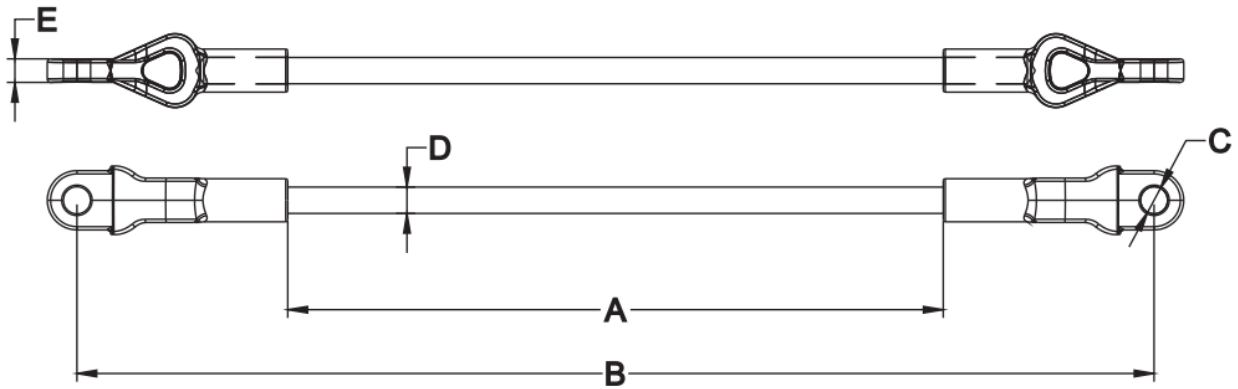
CATALOG NUMBER	DIMENSION(INCHES)					STRENGTH (Lbs)	FITTINGS	WEIGHT PER 100 (LBS)
	A	B	C	D	E			
GL15-12TE-TE	12	21.24	0.69	0.625	0.531	15,000	Thimble Eye-Thimble Eye	251
GL15-18TE-TE	18	27.24	0.69	0.625	0.531	15,000	Thimble Eye-Thimble Eye	267
GL15-24TE-TE	24	33.24	0.69	0.625	0.531	15,000	Thimble Eye-Thimble Eye	280
GL15-36TE-TE	36	45.24	0.69	0.625	0.531	15,000	Thimble Eye-Thimble Eye	310
GL15-42TE-TE	42	51.24	0.69	0.625	0.531	15,000	Thimble Eye-Thimble Eye	326
GL15-54TE-TE	54	63.24	0.69	0.625	0.531	15,000	Thimble Eye-Thimble Eye	357
GL15-60TE-TE	60	69.24	0.69	0.625	0.531	15,000	Thimble Eye-Thimble Eye	372
GL15-78TE-TE	78	87.24	0.69	0.625	0.531	15,000	Thimble Eye-Thimble Eye	417
GL15-96TE-TE	96	105.24	0.69	0.625	0.531	15,000	Thimble Eye-Thimble Eye	463
GL15-120TE-TE	120	129.24	0.69	0.625	0.531	15,000	Thimble Eye-Thimble Eye	523
GL15-144TE-TE	144	153.24	0.69	0.625	0.531	15,000	Thimble Eye-Thimble Eye	584

FIBERGLASS GUY STRAIN INSULATORS

21,000 Pound Rating: Thimble Eye & Thimble Eye


SPECIFICATIONS:

FITTINGS: DUCTILE IRON HOT DIP GALVANIZED ASTM-A-153
 FIBERGLASS ROD: PROPRIETARY VEILED GRAY POLYESTER WITH ADDED
 ULTRAVIOLET PROTECTION
 HARDWARE: STEEL HOT DIP GALVANIZED ASTM-A-153
 COTTER PIN: STAINLESS STEEL



CATALOG NUMBER	DIMENSION(INCHES)					STRENGTH (Lbs.)	FITTINGS	WEIGHT PER 100 (LBS)
	A	B	C	D	E			
GL21-12TE-TE	12	21.86	0.69	0.625	0.688	21,000	Thimble Eye-Thimble Eye	295
GL21-18TE-TE	18	27.86	0.69	0.625	0.688	21,000	Thimble Eye-Thimble Eye	311
GL21-24TE-TE	24	33.86	0.69	0.625	0.688	21,000	Thimble Eye-Thimble Eye	324
GL21-36TE-TE	36	45.86	0.69	0.625	0.688	21,000	Thimble Eye-Thimble Eye	355
GL21-42TE-TE	42	51.86	0.69	0.625	0.688	21,000	Thimble Eye-Thimble Eye	370
GL21-54TE-TE	54	63.86	0.69	0.625	0.688	21,000	Thimble Eye-Thimble Eye	401
GL21-60TE-TE	60	69.86	0.69	0.625	0.688	21,000	Thimble Eye-Thimble Eye	417
GL21-78TE-TE	78	87.86	0.69	0.625	0.688	21,000	Thimble Eye-Thimble Eye	461
GL21-96TE-TE	96	105.86	0.69	0.625	0.688	21,000	Thimble Eye-Thimble Eye	507
GL21-120TE-TE	120	129.86	0.69	0.625	0.688	21,000	Thimble Eye-Thimble Eye	567
GL21-144TE-TE	144	153.86	0.69	0.625	0.688	21,000	Thimble Eye-Thimble Eye	628



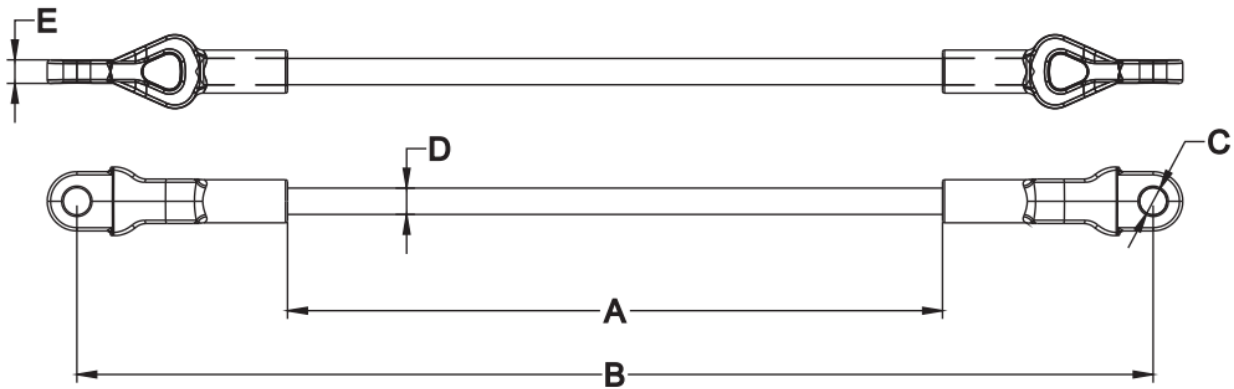
FIBERGLASS GUY STRAIN INSULATORS

30,000 Pound Rating: Thimble Eye & Thimble Eye



SPECIFICATIONS:

FITTINGS: DUCTILE IRON HOT DIP GALVANIZED ASTM-A-153
FIBERGLASS ROD: PROPRIETARY VEILED GRAY POLYESTER WITH ADDED ULTRAVIOLET PROTECTION
HARDWARE: STEEL HOT DIP GALVANIZED ASTM-A-153
COTTER PIN: STAINLESS STEEL



CATALOG NUMBER	DIMENSION(INCHES)					STRENGTH (Lbs.)	FITTINGS	WEIGHT PER 100 (LBS)
	A	B	C	D	E			
GL30-12TE-TE	12	25	0.811	0.75	0.886	30,000	Thimble Eye-Thimble Eye	585
GL30-18TE-TE	18	31	0.811	0.75	0.886	30,000	Thimble Eye-Thimble Eye	606
GL30-24TE-TE	24	37	0.811	0.75	0.886	30,000	Thimble Eye-Thimble Eye	627
GL30-36TE-TE	36	49	0.811	0.75	0.886	30,000	Thimble Eye-Thimble Eye	669
GL30-42TE-TE	42	55	0.811	0.75	0.886	30,000	Thimble Eye-Thimble Eye	689
GL30-54TE-TE	54	67	0.811	0.75	0.886	30,000	Thimble Eye-Thimble Eye	730
GL30-60TE-TE	60	73	0.811	0.75	0.886	30,000	Thimble Eye-Thimble Eye	752
GL30-78TE-TE	78	91	0.811	0.75	0.886	30,000	Thimble Eye-Thimble Eye	814
GL30-96TE-TE	96	109	0.811	0.75	0.886	30,000	Thimble Eye-Thimble Eye	876
GL30-120TE-TE	120	133	0.811	0.75	0.886	30,000	Thimble Eye-Thimble Eye	960
GL30-144TE-TE	144	157	0.811	0.75	0.886	30,000	Thimble Eye-Thimble Eye	1042



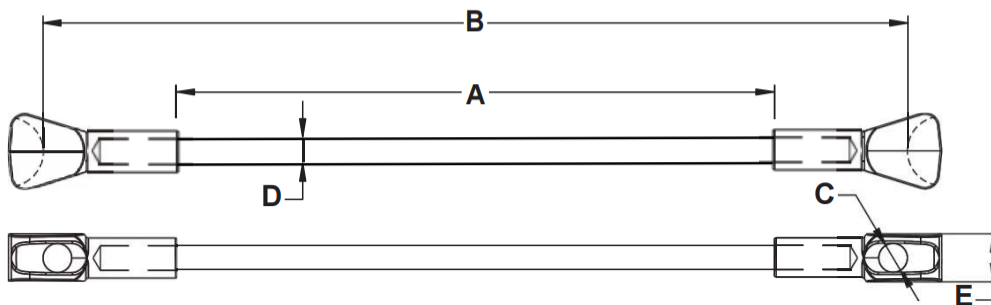
FIBERGLASS GUY STRAIN INSULATORS

15,000 Pound Rating: Thimble & Thimble



SPECIFICATIONS:

FITTINGS: DUCTILE IRON HOT DIP GALVANIZED ASTM-A-153
FIBERGLASS ROD: PROPRIETARY VEILED GRAY POLYESTER WITH ADDED
ULTRAVIOLET PROTECTION
HARDWARE: STEEL HOT DIP GALVANIZED ASTM-A-153
COTTER PIN: STAINLESS STEEL



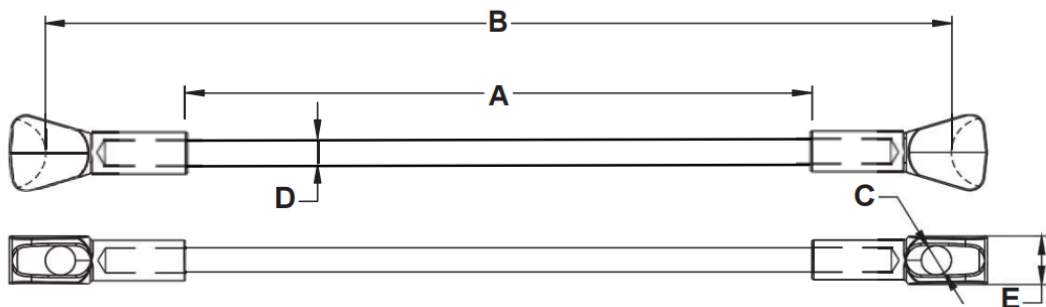
CATALOG NUMBER	DIMENSION(INCHES)					STRENGTH (Lbs.)	FITTINGS	WEIGHT PER 100 (LBS)
	A	B	C	D	E			
GL15-12T-T	12	18.9	0.75	0.625	1.25	15,000	Thimble-Thimble	242
GL15-18T-T	18	24.9	0.75	0.625	1.25	15,000	Thimble-Thimble	257
GL15-24T-T	24	30.9	0.75	0.625	1.25	15,000	Thimble-Thimble	272
GL15-36T-T	36	42.9	0.75	0.625	1.25	15,000	Thimble-Thimble	302
GL15-42T-T	42	48.9	0.75	0.625	1.25	15,000	Thimble-Thimble	317
GL15-54T-T	54	60.9	0.75	0.625	1.25	15,000	Thimble-Thimble	347
GL15-60T-T	60	66.9	0.75	0.625	1.25	15,000	Thimble-Thimble	362
GL15-78T-T	78	84.9	0.75	0.625	1.25	15,000	Thimble-Thimble	408
GL15-96T-T	96	102.9	0.75	0.625	1.25	15,000	Thimble-Thimble	453
GL15-120T-T	120	126.9	0.75	0.625	1.25	15,000	Thimble-Thimble	513
GL15-144T-T	144	150.9	0.75	0.625	1.25	15,000	Thimble-Thimble	574

FIBERGLASS GUY STRAIN INSULATORS

21,000 Pound Rating: Thimble & Thimble


SPECIFICATIONS:

FITTINGS: DUCTILE IRON HOT DIP GALVANIZED ASTM-A-153
 FIBERGLASS ROD: PROPRIETARY VEILED GRAY POLYESTER WITH ADDED
 ULTRAVIOLET PROTECTION
 HARDWARE: STEEL HOT DIP GALVANIZED ASTM-A-153
 COTTER PIN: STAINLESS STEEL



CATALOG NUMBER	DIMENSION(INCHES)					STRENGTH (Lbs.)	FITTINGS	WEIGHT PER 100 (LBS)
	A	B	C	D	E			
GL21-12T-T	12	19.6	0.89	0.625	1.443	21,000	Thimble-Thimble	242
GL21-18T-T	18	25.6	0.89	0.625	1.443	21,000	Thimble-Thimble	257
GL21-24T-T	24	31.6	0.89	0.625	1.443	21,000	Thimble-Thimble	272
GL21-36T-T	36	43.6	0.89	0.625	1.443	21,000	Thimble-Thimble	302
GL21-42T-T	42	49.6	0.89	0.625	1.443	21,000	Thimble-Thimble	317
GL21-54T-T	54	61.6	0.89	0.625	1.443	21,000	Thimble-Thimble	347
GL21-60T-T	60	67.6	0.89	0.625	1.443	21,000	Thimble-Thimble	362
GL21-78T-T	78	85.6	0.89	0.625	1.443	21,000	Thimble-Thimble	408
GL21-96T-T	96	103.6	0.89	0.625	1.443	21,000	Thimble-Thimble	453
GL21-120T-T	120	127.6	0.89	0.625	1.443	21,000	Thimble-Thimble	513
GL21-144T-T	144	151.6	0.89	0.625	1.443	21,000	Thimble-Thimble	574



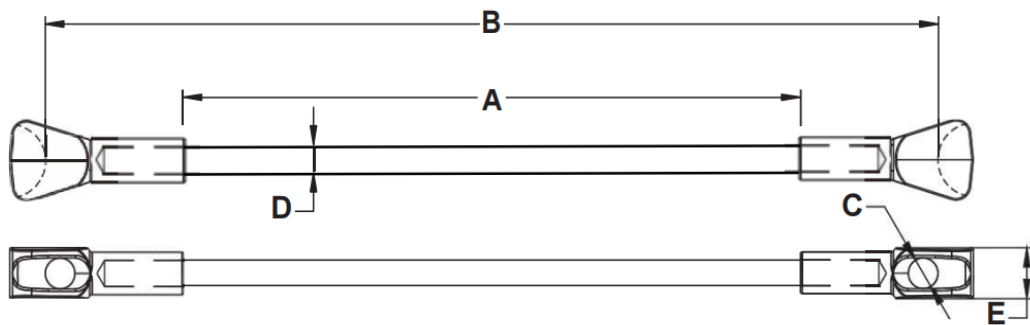
FIBERGLASS GUY STRAIN INSULATORS

30,000 Pound Rating: Thimble & Thimble



SPECIFICATIONS:

FITTINGS: DUCTILE IRON HOT DIP GALVANIZED ASTM-A-153
FIBERGLASS ROD: PROPRIETARY VEILED GRAY POLYESTER WITH ADDED ULTRAVIOLET PROTECTION
HARDWARE: STEEL HOT DIP GALVANIZED ASTM-A-153
COTTER PIN: STAINLESS STEEL



CATALOG NUMBER	DIMENSION(INCHES)					STRENGTH (Lbs.)	FITTINGS	WEIGHT PER 100 (LBS)
	A	B	C	D	E			
GL30-12T-T	12	21	0.89	0.75	1.5	30,000	Thimble-Thimble	518
GL30-18T-T	18	27	0.89	0.75	1.5	30,000	Thimble-Thimble	539
GL30-24T-T	24	33	0.89	0.75	1.5	30,000	Thimble-Thimble	560
GL30-36T-T	36	45	0.89	0.75	1.5	30,000	Thimble-Thimble	601
GL30-42T-T	42	51	0.89	0.75	1.5	30,000	Thimble-Thimble	622
GL30-54T-T	54	63	0.89	0.75	1.5	30,000	Thimble-Thimble	664
GL30-60T-T	60	69	0.89	0.75	1.5	30,000	Thimble-Thimble	684
GL30-78T-T	78	87	0.89	0.75	1.5	30,000	Thimble-Thimble	747
GL30-96T-T	96	105	0.89	0.75	1.5	30,000	Thimble-Thimble	809
GL30-120T-T	120	129	0.89	0.75	1.5	30,000	Thimble-Thimble	892
GL30-144T-T	144	153	0.89	0.75	1.5	30,000	Thimble-Thimble	975