



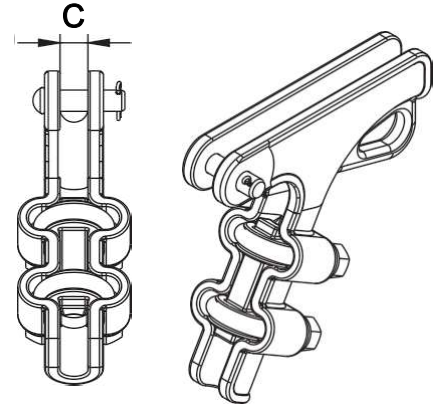
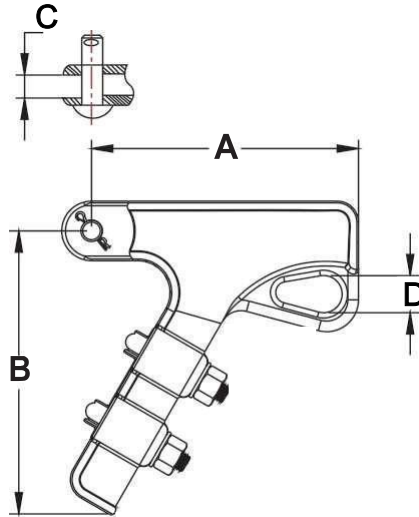
INDEX

SECTION 3 - DEADEND AND SUSPENSION CLAMPS

QUADRANT DEADEND CLAMPS -----	3-1
ALUMINUM STRAIGHT DEADEND CLAMPS-----	3-2
FERROUS STRAIGHT DEADEND CLAMPS -----	3-3
SIDE OPENING DEADEND CLAMPS-----	3-4
CORONA FREE CLAMP -----	3-4A
SIDE OPENING DEADEND CLAMPS-----	3-5
STRAIN DEADEND CLAMPS -----	3-6
SUSPENSION CLAMPS-----	3-7
SUSPENSION CLAMPS CORONA FREE-----	3-7A
ANGLE SUSPENSION CLAMPS -----	3-8
THIMBLE CLEVIS PULLING EYE TYPE -----	3-9
LINE POST TRUNNION CLAMPS -----	3-10



QUADRANT DEADEND CLAMPS



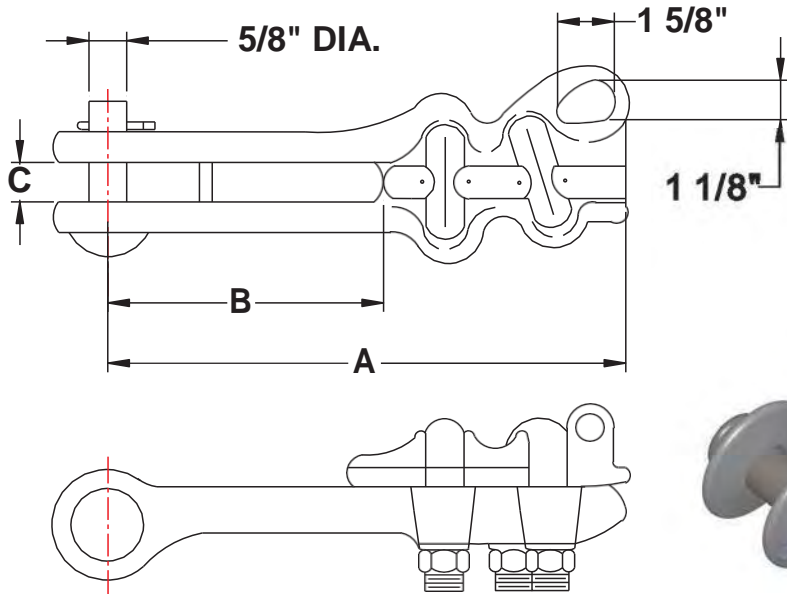
MATERIAL BODY AND KEEPER
ALUMINUM OR DUCTILE IRON
CLEVIS SPIN-GALVANIZED STEEL
FINISHED HOT DIP GALVANIZED
FOR IRON PARTS

CATALOG NUMBER	CABLE DIAMETER	CABLE RANGE	DIM. A	DIM. B	DIM. C	DIM. D	U-BOLTS		ULTIMATE STRENGT	WEIGHT /100(LBS)	BODY TYPE
							NO.	SIZE			
AQC52N1	0.18"-0.52"	#6-#3/0 AL #6-#3/0 ACSR	3 7/8"	3 13/16"	11/16"	7/8"	1	1/2"	8,000 LBS.	104	AL
AQC52N	0.18"-0.52"	#6-#3/0 AL #6-#3/0 ACSR	4"	4 7/8"	11/16"	7/8"	2	1/2"	8,000 LBS.	122	AL
AQC57N	0.25"-0.57"	#2-#4/0 AL #2-#4/0 ACSR	5 1/2"	5 1/8"	3/4"	1"	2	3/8"	10,000 LBS	202	AL
AQC64N	0.20"-0.64"	#4-#300 AL #6-#266.8 ACSR	4 5/8"	5"	3/4"	1"	2	1/2"	15,000 LBS	231	AL
AQC78N	0.25"-0.743"	#2/0-#450 AL #1/0-#397 ACSR	6 1/2"	6 1/8"	13/16"	1 1/8"	2	1/2"	15,000 LBS	250	AL
AQC88N	0.52"-0.88"	#3/0-#556.5 AL #3/0-#556.5 ACSR	6 3/8"	7"	15/16"	1"	2	1/2"	15,000 LBS	258	AL
AQC100N	0.50"-1.00"	#4/0-#715 AL #3/0-#636 ACSR	9 7/8"	8 3/4"	11/16"	1 1/4"	2	1/2"	18,000 LBS.	480	AL
MD46N	0.18"-0.46"	3/16"-3/8"GALV.STEEL #6 STR-#4/0 SOL. COPPER	6"	5 1/2"	11/16"	7/8"	1	1/2"	15,000 LBS.	210	FE
MD55N	0.22"-0.55"	1/4"-1/2"GALV.STEEL #4 STR-#4/0 STR COPPER	8"	8 5/8"	11/16"	1 1/4"	1	1/2"	19,000 LBS.	490	FE

THE ABOVE QUADRANT DEADEND CLAMPS ARE OFFERED IN ALUMINUM AND MALLEABLE IRON.
THE MALLEABLE CLAMPS "MD" SERIES CAN BE USED ON COPPER OR COPPERWELD CONDUCTORS.
FOR SOCKET FITTING CHANGE THE SUFFIX "N" TO THE SUFFIX "S" IN THE CATALOG NUMBER.
FOR CLEVIS FITTING CHANGE THE SUFFIX "N" TO THE SUFFIX "C"..
THE IRON PARTS ARE HOT DIPPED GALVANIZED TO ASTM A153.
FOR OTHER CHOICES PLEASE REFER TO PAGE 3-6



ALUMINUM STRAIGHT DEADEND CLAMPS



CATALOG NUMBER	CLAMPING RANGE	CONDUCTOR RANGE	DIM. A	DIM. B	DIM. C	U-BOLTS & SIZE	ULTIMATE STRENGTH	WEIGHT /100(LBS)
SAC - 48 - N	.18" - .502"	#6 - #3/0 AL. #6 - #3/0 ACSR	7 5/8"	3 7/8"	11/16"	2 - 3/8"	7,000 LBS.	137
SAC - 51 - N	.18" - .51"	#6 - #3/0 AL. #6 - #3/0 ACSR	7 5/8"	3 1/4"	11/16"	2 - 1/2"	7,000 LBS.	139
SAC - 60 - N	.19" - .60"	#4 - #266.8 AL. #6 - #266.8 ACSR	8 6/7"	3 3/4"	11/16"	2 - 1/2"	8,000 LBS.	238
SAC - 60L - N	.19" - .60"	#4 - #266.8 AL. #6 - #266.8 ACSR	10 5/8"	6"	3/4"	2 - 1/2"	8,000 LBS.	258
SAC - 88 - N	.31" - .88"	#1 - #600 AL. #2 - #477 ACSR	9"	4 3/4"	31/32"	2 - 1/2"	10,000 LBS.	241
SAC - 88L - N	.31" - .88"	#1 - #600 AL. #2 - #477 ACSR	12"	7 1/2"	15/16"	2 - 1/2"	10,000 LBS.	253
SAC - 116 - N	.31" - 1.16"	#1 - #900 AL. #2 - #556 ACSR	10 1/2"	5 1/2"	1"	2 - 1/2"	15,000 LBS.	344
SAC - 130 - N	.64" - 1.30"	#300 - #1272 AL. #266.8 - #1113 ACSR	10 1/2"	5 1/2"	1"	2 - 1/2"	15,000 LBS.	446

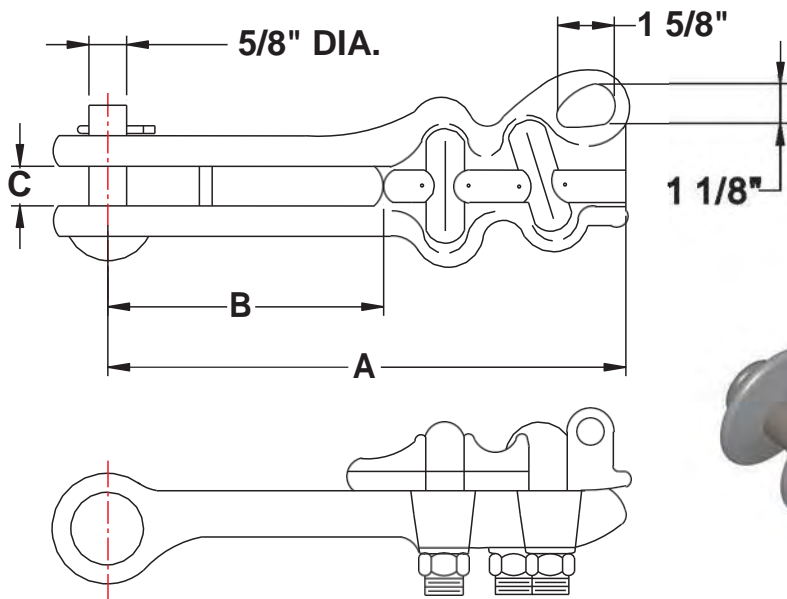
THE ABOVE DEADEND CLAMPS ARE USED PRIMARILY FOR DISTRIBUTION AND LIGHT TRANSMISSION WORK. FOR SOCKET FITTING CHANGE THE SUFFIX "N" TO THE SUFFIX "S" IN THE CATALOG NUMBER. FOR CLEVIS FITTING CHANGE THE SUFFIX "N" TO THE SUFFIX "C".

THE MATERIAL ON THE ABOVE STRAIGHT LINE DEADEND CLAMPS IS AS FOLLOWS :

- BODY AND KEEPER : A356 - T6 ALUMINUM ALLOY
- CLEVIS PIN AND BOLTS : GALVANIZED STEEL
- COTTER PIN : STAINLESS STEEL
- FINISH : HOT DIPPED GALVANIZED FOR IRON PARTS



FERROUS STRAIGHT DEADEND CLAMPS



CATALOG NUMBER	CLAMPING RANGE	CONDUCTOR RANGE COPPER / ALUMINUM	DIM. A	DIM. B	DIM. C	U-BOLTS & SIZE	ULTIMATE STRENGTH	WEIGHT /100(LBS)
SFC- 51 - N	.18" - .51"	#6 - #3/0 MCM	7 5/8"	3 1/4"	11/16"	2 - 1/2"	7,000 LBS.	404
SFC- 60 - N	.19" - .60"	#4 - #266 MCM	8 3/4"	3 3/4"	11/16"	2 - 1/2"	8,000 LBS.	692
SFC- 88 - N	.31" - .88"	#1/0 - #500 MCM	9"	4 3/4"	31/32"	2 - 1/2"	10,000 LBS.	701
SFC- 130 - N	.64" - 1.30"	#266 - #1250 MCM	10 1/2"	5 1/2"	1"	2 - 1/2"	15,000 LBS.	1297

THE ABOVE DEADEND CLAMPS ARE USED PRIMARILY FOR DISTRIBUTION AND LIGHT TRANSMISSION WORK. FOR SOCKET FITTING CHANGE THE SUFFIX "N" TO THE SUFFIX "S" IN THE CATALOG NUMBER.

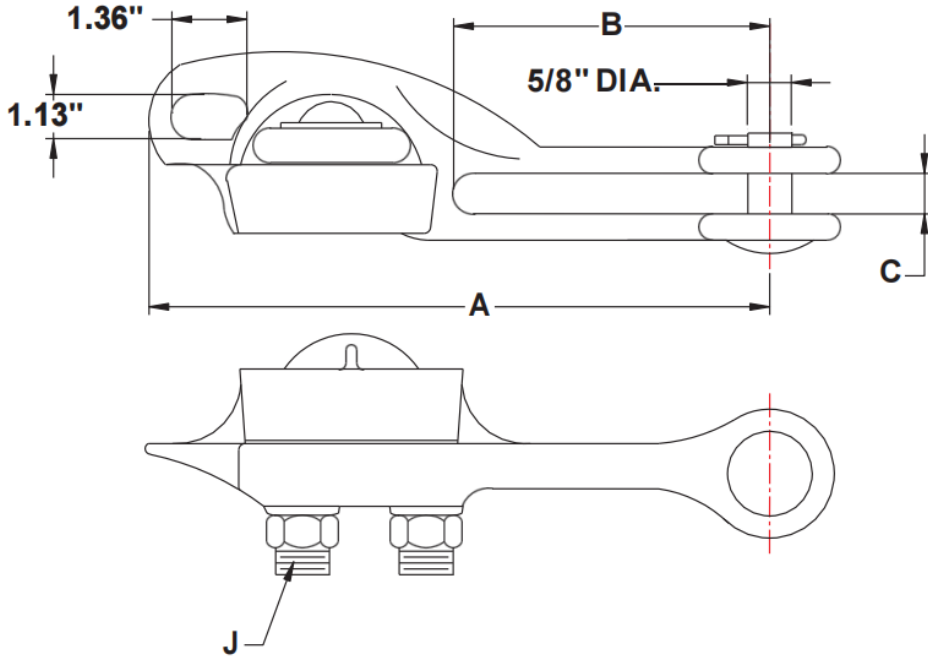
FOR CLEVIS FITTING CHANGE THE SUFFIX "N" TO THE SUFFIX "C".

THE MATERIAL ON THE ABOVE STRAIGHT LINE DEADEND CLAMPS IS AS FOLLOWS :

- BODY AND KEEPER : DUCTILE CAST IRON HOT DIPPED GALVANIZED TO ASTM A153
- CLEVIS PIN AND BOLTS : GALVANIZED STEEL HOT DIPPED GALVANIZED TO ASTM A153
- COTTER PIN : STAINLESS STEEL



SIDE OPENING DEADEND CLAMPS



CATALOG NUMBER	CONDUCTOR RANGE		DIM. "A"	DIM. "B"	DIM. "C"	U BOLT DIA. J	U BOLT NO.	MIN. ULTIMATE STRENGTH		WT. PER 100
	INCHES	AWG						BODY	SAG. EYE	
SODC-47N	.19"-.47"	#6-#2/0 ACSR #4-#2/0 AL	7.79"	3.64"	3/4"	3/8"	1	6000LBS	6000LBS	123 LBS
SODC-57N	.19"-.57"	#6-#4/0 ACSR #4-#4/0 AL	8 3/8"	4.5"	0.7"	1/2"	1	8000LBS	8000LBS	191 LBS
SODC-70N	.31"-.70"	#4-#336 ACSR #2-#350 AL	9.10"	4.5"	0.7"	1/2"	1	8000LBS	8000LBS	195 LBS
SODC-88N	.25"-.89"	#4-#556 ACSR #2-#556 AL	9.85"	5"	1"	1/2"	1	8000LBS	6000LBS	200 LBS
SODC-88N-2	.25"-.88"	#4-#556 ACSR #2-#556 AL	10.25"	4.78"	1.06"	1/2"	2	10000LBS	6000LBS	333 LBS
SODC-116N	.69"-1.16"	#336-#900 ACSR #350-#954 AL	12.00"	7.25"	0.80"	1/2"	2	12000 LBS	9000LBS	455 LBS

THE ABOVE SIDE OPENING DEADEND CLAMPS ARE PRIMARILY USED FOR HOT LINE DEAD-ENDING. EACH IS FURNISHED WITH A SPRING LOADED KEEPER, WHICH IS IN AN OPEN POSITION FOR INSTALLATION. FOR A SOCKET FITTING ADD SUFFIX : "S"
FOR A CLEVIS FITTING ADD SUFFIX : "C"

MATERIAL : BODY & KEEPER – ALUMINUM ALLOY A – 356 – T
HARDWARE – HOT DIPPED GALVANIZED STEEL TO ASTM 153
COTTER PIN & SPRING – STAINLESSSTEEL



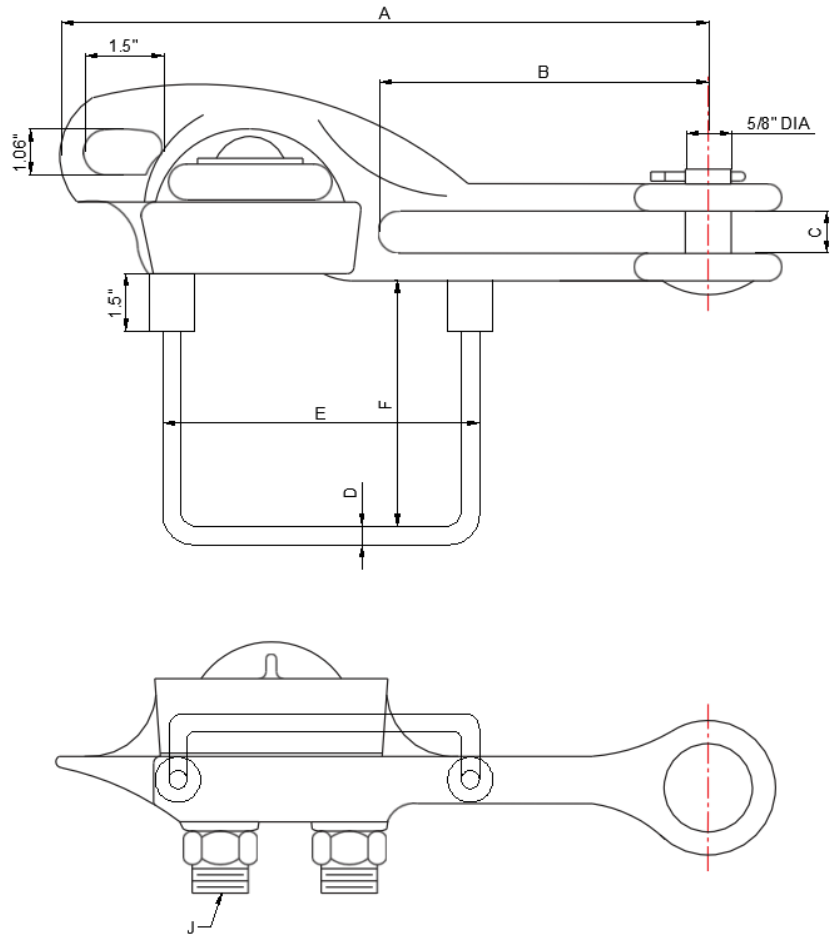
CORONA FREE CLAMPS

Corona Free Clamp (For Use with Armor Rods)

For distribution construction with all aluminum, ACSR or aluminum alloy conductor. Combination deadend and stirrup or tap clamp.

Stirrup permits tapping energized conductors without arcing damage to the conductor.

Material and installation costs are less with the SOSC combination clamp than with other equivalent methods of deadending and tapping a conductor.



CATALOG NUMBER	CONDUCTOR RANGE		DIM. A	DIM. B	DIM. C	DIM. D	DIM. E	DIM. F	DIM. J	U BOLT NO.	MINIMUM ULTIMATE STRENGTH		WT. PER 100
	INCHES	AWG									BODY	SAG EYE	
SOSC-47N	0.19"-0.47"	#6-#2/0 ACSR #4-#2/0 AL	7.79	3.64	3/4"	0.289"	3.6"	2.8"	3/8"	1	6000 LBS	6000 LBS	181
SOSC-70N	0.31-0.70	#4-#336 ACSR #2-#350 AL	9.1"	4.3"	0.72"	0.325"	4.5"	3.7"	1/2"	1	8000 LBS	8000 LBS	215

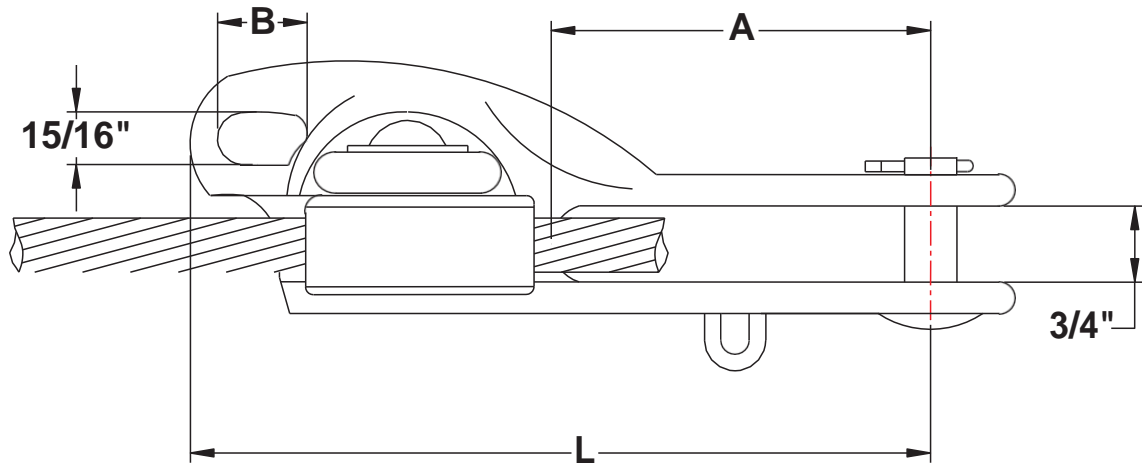
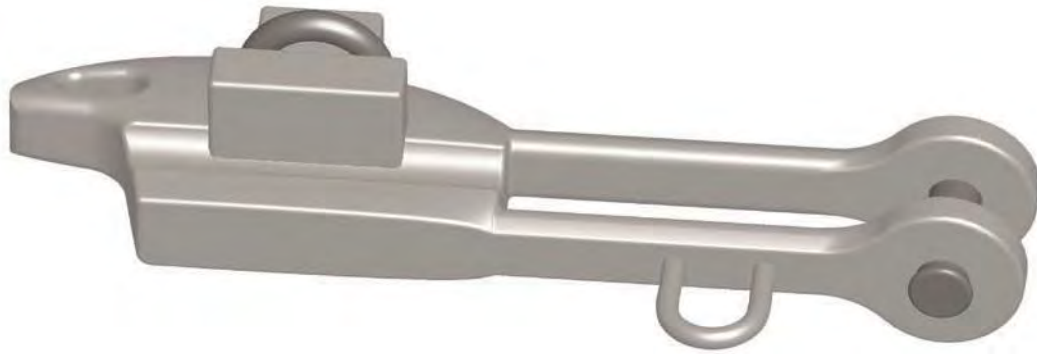
Material: Body and Keeper-356-T6 Aluminum Alloy
 Hardware-Galvanized Steel
 Sockets and Clevises-Ductile Iron, Galvanized
 Cotter Pin-#302 Stainless Steel
 Stirrup-Copper

NOTES:

- (1) Recommended Torque on U-bolts: 3/8"-240 in. lbs., 1/2"-480 in. lbs.
- (2) Lifting eye is standard on keeper for hot line work.
- (3) All bolted deadends are rated 40% of RBS-Partial tension per ANSI C119.4
- (4) For conductor sizes not shown in catalog, consult us



SIDE OPENING DEADEND CLAMPS

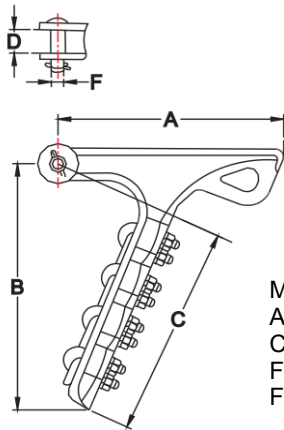


CATALOG NUMBER	CONDUCTOR RANGE		DIM. "L"	DIM. "A"	DIM. "B"	DIM. "J"	MINIMUM ULTIMATE STRENGTH		WT. PER 100
	INCHES	AWG					BODY	SAG. EYE	
SODC- 51E	.19- .51	#6-#3/0 ACSR #4 - #3/0 AL.	8 1/2"	3 3/4"	1"	1/2"	8000 LBS.	6000 LBS.	123 LBS.

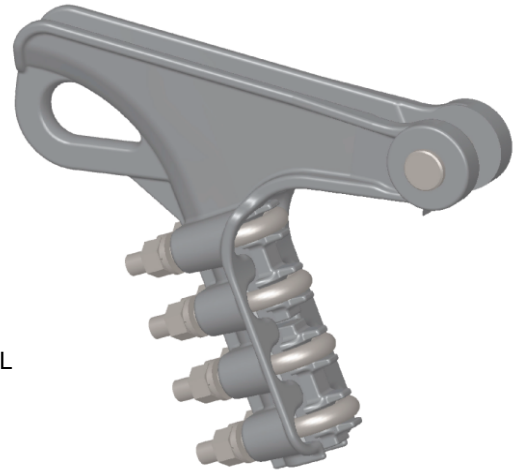
THE ABOVE SIDE OPENING DEADEND CLAMP IS PRIMARILY USED FOR HOT LINE DEAD-ENDING.
 EACH IS FURNISHED WITH A SPRING LOADED KEEPER, WHICH IS IN AN OPEN POSITION FOR INSTALLATION .
 AN INSTALLATION EYE IS ALSO FURNISHED, SO CLAMP CAN BE HANDLED WITH A SHOTGUN STICK.
 FOR TIN PLATED CLAMPS ADD THE SUFFIX - "TP"
 FOR A SOCKET FITTING ADD SUFFIX : "S"
 FOR A CLEVIS FITTING ADD SUFFIX : "C"

MATERIAL : BODY & KEEPER - ALUMINUM ALLOY A356 - T6
 HARDWARE - HOT DIPPED GALVANIZED STEEL TO ASTM A153
 COTTER PIN & SPRING - STAINLESS STEEL

STRAIN DEADEND CLAMPS



MATERIAL BODY AND KEEPER
ALUMINUM OR DUCTILE IRON
CLEVIS SPIN-GALVANIZED STEEL
FINISHEDHOT DIP GALVANIZED
FOR IRON PARTS



CATALOG NUMBER	CABLE DIAMETER	DIM. A	DIM. B	DIM. C	DIM. D	DIM. F	U BOLTS NO.SIZE	ULTIMATE STRENGTH	BODY TYPE
ASC-64-N	0.20"-0.64"	9"	7 1/4"	6"	5/8"	5/8"	3 1/2"	15,000 LBS	AL
ASC-75-N	0.30"-0.75"	10 1/4"	8 1/2"	7 1/8"	1"	5/8"	4 1/2"	20,000 LBS	AL
ASC-86-N	0.46"-0.94"	11 1/4"	9 3/8"	7 1/2"	1.06"	5/8"	4 1/2"	25,000 LBS	AL
ASC-120-N	0.50"-1.20"	13 1/8"	12"	9"	1 1/8"	3/4"	5 1/2"	30,000 LBS	AL
ASC-142-N	0.70"-1.42"	14"	13 1/8"	10 1/2"	1 7/16"	3/4"	5 5/8"	35,000 LBS	AL
ASC-155-N	1.18"-1.55"	15 1/2"	15 3/4"	12 3/8"	1 13/16"	3/4"	5 5/8"	35,000 LBS	AL
ASC-185-N	1.39"-1.85"	17"	18"	12"	1 11/16"	1"	5 5/8"	50,000 LBS	AL
MSC-65-N	0.22"-0.55"	5 7/8"	—	4 5/8"	11/16"	5/8"	2 1/2"	15,000 LBS	FE
MSC-68-N	0.18"-0.46"	8"	—	7 3/8"	11/16"	5/8"	3 1/2"	18,000 LBS	FE
MSC-84-N	0.22"-0.55"	10 3/4"	10 3/8"	8 7/16"	15/16"	5/8"	4 1/2"	30,000 LBS	FE

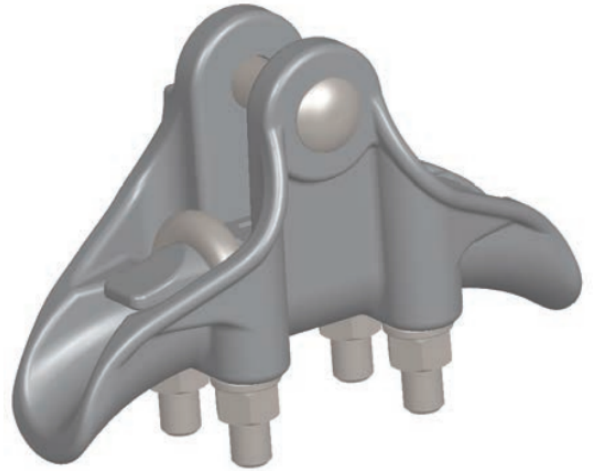
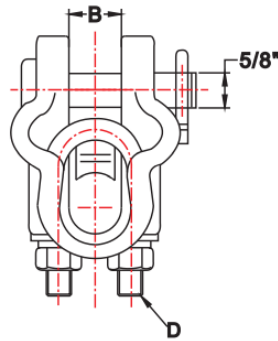
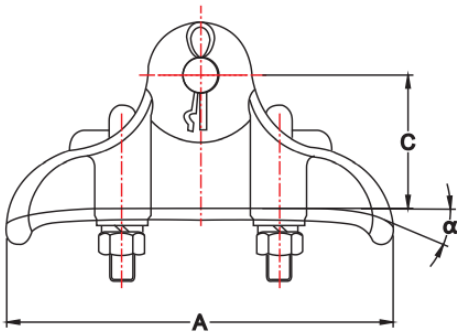
FOR SOCKET FITTING CHANGE THE SUFFIX "N " TO "S " IN THE CATALOG NUMBER FOR CLEVIS FITTING CHANGE "N" TO "C " .

THE MATERIAL FOR THE TYPE " ASC " CLAMPS IS A356 – T6 ALUMINUM ALLOY.

THE MATERIAL FOR THE TYPE " MSC " CLAMP IS DUCTILE CAST IRON.

ALL IRON PARTS ARE HOT DIPPED GALVANIZED TO ASTM A153.

SUSPENSION CLAMPS



MATERIAL: BODY AND KEEPER ALUMINUM ALLOY.
 HARDWARE-HOT DIP GALVANIZED STEEL.
 SOCKETS AND CLEVIS-M.C.I HOT DIP GALVANIZED
 LOCKING PIN-STAINLESS STEEL

CATALOG NUMBER	CLAMPING RANGE	DIM. A	DIM. B	DIM. C	DIM. D	a	ULTIMATE STRENGTH	APPROX. WEIGHT PER 100	MATERIAL
ALSC-62-N	0.26"-0.62"	6 3/4"	7/8"	2 2/7"	1/2"	30°	17,000 LBS.	190 LBS.	AL
ALSC-86-N	0.40"-0.86"	7 1/2"	1"	2 5/9"	1/2"	30°	18,000 LBS.	210 LBS.	AL
ALSC-119-N	0.50"-1.19"	8"	1 3/8"	2 1/2"	1/2"	22.5°	25,000 LBS.	280 LBS.	AL
ALSC-139-N	0.90"-1.39"	8 7/8"	1 1/2"	2 7/8"	1/2"	22.5°	25,000 LBS.	320 LBS.	AL
ALSC-142-N	0.90"-1.47"	8 3/4"	1 9/16"	2 7/8"	1/2"	22.5°	25,000 LBS.	350 LBS.	AL
ALSC-162-N	1.10"-1.62"	9 1/2"	1 13/16"	3 1/8"	1/2"	22.5°	25,000 LBS.	380 LBS.	AL
ALSC-182-N	1.25"-1.82"	10"	1 15/16"	3 1/6"	1/2"	20°	25,000 LBS.	510 LBS.	AL
ALSC-204-N	1.40"-2.04"	10 1/2"	2 1/4"	3 1/2"	5/8"	20.5°	25,000 LBS.	490 LBS.	AL
ALSC-252-N	2.00"-2.52"	12"	2 3/4"	4 1/4"	5/8"	17.5°	30,000 LBS.	900 LBS.	AL
MLSC-46-N	0.20"-0.46"	5 5/8"	11/16"	2"	1/2"	30°	16,000 LBS.	215 LBS.	FE
MLSC-60-N	0.20"-0.60"	6 3/8"	15/16"	2 1/8"	1/2"	30°	16,000 LBS.	250 LBS.	FE
MLSC-70-N	0.30"-0.70"	6.38"	0.63"	2"	1/2"	30°	18,000 LBS.	242 LBS.	FE
MLSC-104-N	0.50"-1.04"	8"	1"	2 3/4"	1/2"	30°	25,000 LBS.	332 LBS.	FE

FOR A SOCKET FITTING CHANGE THE SUFFIX "N" IN THE PART NUMBER TO AN "S".

FOR CLEVIS FITTING CHANGE THE SUFFIX "N" TO A "C".

THE MATERIAL ON THE TYPE "ALSC" CLAMPS IS A356-T6 ALUMINUM ALLOY.

THE MATERIAL ON THE TYPE "MLSC" CLAMPS IS DUCTILE CAST IRON.

ALL HARDWARE IS STEEL HOT DIPPED GALVANIZED TO ASTM A153. COTTER PIN IS STAINLESS STEEL.

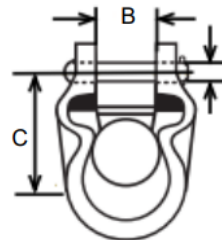
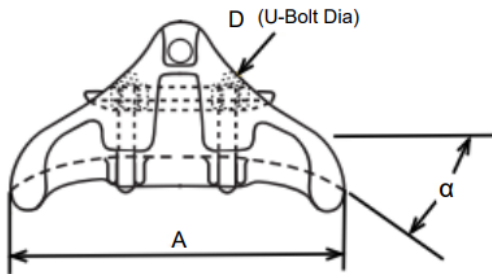
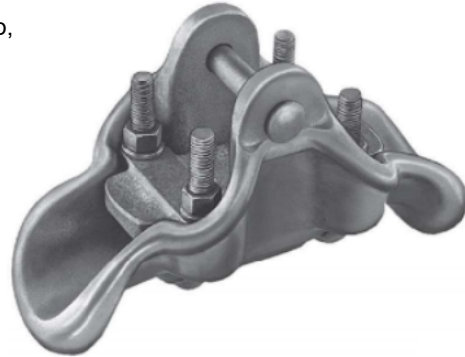


SUSPENSION CLAMPS CORONA FREE

Corona Free Clamp (For Use with Armor Rods)

Designed for use on extra-high voltage transmission lines. Corona and RIV are controlled through the design of the clamp, thus eliminating the need for control rings.

Material: Body and Keeper-aluminum alloy
Hardware-galvanized steel
Socket and Clevis-galvanized ductile iron
Cotter Pin-stainless steel
Grommet-neoprene

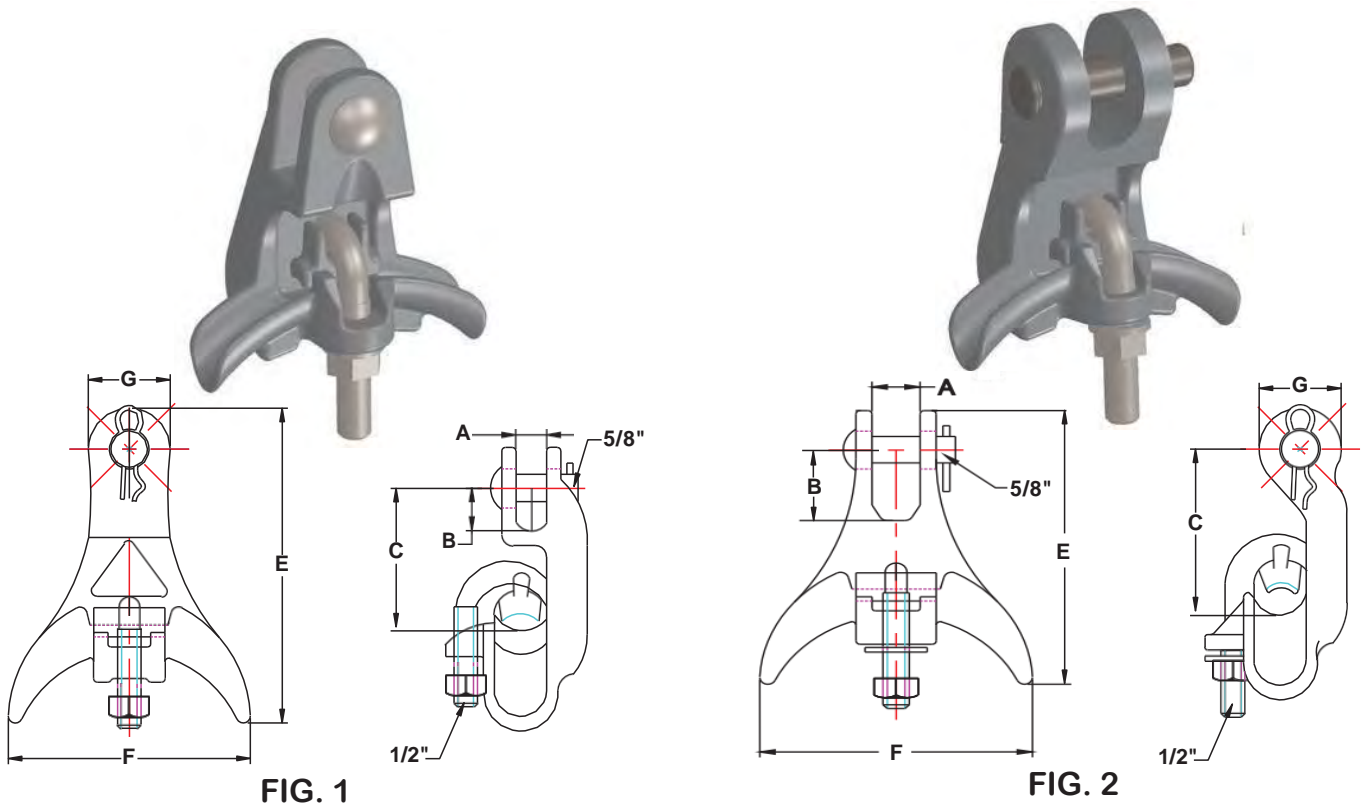


CATALOG NUMBER	CLAMPING RANGE	DIM. A	DIM. B	DIM. C	DIM. D	α	ULTIMATE STRENGTH	MATERIAL
CFSC-62-N	0.26"-0.62"	6 3/4"	7/8"	2 2/7"	1/2"	30°	17,000 LBS.	AL
CFSC-86-N	0.40"-0.86"	7 1/2"	1"	2 5/9"	1/2"	30°	18,000 LBS.	AL
CFSC-119-N	0.50"-1.19"	8"	1 3/8"	2 1/2"	1/2"	22.5°	25,000 LBS.	AL
CFSC-139-N	0.90"-1.39"	8 7/8"	1 1/2"	2 7/8"	1/2"	22.5°	25,000 LBS.	AL
CFSC-147-N	0.90"-1.47"	8 3/4"	1 9/16"	2 7/8"	1/2"	22.5°	25,000 LBS.	AL
CFSC-162-N	1.10"-1.62"	9 1/2"	1 13/16"	3 1/8"	1/2"	22.5°	25,000 LBS.	AL
CFSC-182-N	1.25"-1.82"	10"	1 15/16"	3 1/6"	1/2"	20°	25,000 LBS.	AL
CFSC-204-N	1.40"-2.04"	10 1/2"	2 1/4"	3 1/2"	5/8"	20.5°	25,000 LBS.	AL
CFSC-252-N	2.00"-2.52"	12"	2 3/4"	4 1/4"	5/8"	17.5°	30,000 LBS.	AL

FOR A SOCKET FITTING CHANGE THE SUFFIX "N" IN THE PART NUMBER TO AN "S"
FOR CLEVIS FITTING CHANGE THE SUFFIX "N" TO A "C"
THE MATERIAL IS A356-T6 ALUMINUM ALLOY
ALL HARDWARE IS STEEL HOT DIPPED GALVANIZED TO ASTM A153. COTTER PIN -- STAINLESS STEEL



ANGLE SUSPENSION CLAMPS



CATALOG NUMBER	FIG. NO.	CLAMP RANGE DIA.	DIM. A	DIM. B	DIM. C	DIM. E	DIM. F	DIM. G	ULTIMATE STRENGTH	MATERIAL
AASC-60-90	1	.16" - .60"	11/16"	15/16"	2 1/8"	4 3/8"	4 3/16"	1 1/2"	7000 LBS.	AL
AASC-60	2	.16" - .60"	11/16"	1 1/8"	2 1/8"	4 3/16"	4 3/16"	1 1/16"	7000 LBS.	AL
AASC-75-90	1	.198" - .732"	5/7"	1"	3 3/38"	4 7/8"	4 2/7"	1 1/2"	7000 LBS.	AL
AASC-75	2	.198" - .732"	11/16"	1 1/8"	2-7/8"	4"	4 1/8"	1 1/2"	7000 LBS.	AL
AASC-125-90	1	.43" - 1.25"	13/16"	1 5/16"	3"	4 1/8"	5 1/4"	1 1/2"	12000 LBS.	AL
AASC-125	2	.43" - 1.25"	11/16"	1 5/16"	4"	4 3/4"	4 5/8"	1 1/2"	12000 LBS.	AL
AASC-166-90	1	.75" - 1.66"	3/4"	1 5/16"	3"	4"	7 1/4"	1 1/2"	18000 LBS.	AL
AASC-166	2	.75" - 1.66"	13/16"	1 5/16"	6"	7 1/8"	4"	1 1/2"	18000 LBS.	AL
FASC-60-90	1	.16" - .60"	1 1/6"	1 5/16"	2 1/8"	3"	4 3/16"	1 1/2"	12000 LBS.	FE
FASC-75	2	.16" - .75"	11/16"	1 5/16"	2 1/8"	3 1/4"	4 3/16"	1 1/2"	12000 LBS.	FE
FASC-166-90	1	.75" - 1.66"	3/4"	1 5/16"	3"	4"	7 1/4"	1 1/2"	20000 LBS.	FE
FASC-166	2	.75" - 1.66"	13/16"	1 5/16"	6"	7 1/8"	4"	1 1/2"	20000 LBS.	FE

THE ABOVE ANGLE SUSPENSION CLAMPS ARE OFFERED IN EITHER ALUMINUM "AASC" SERIES OR IN DUCTILE IRON "FASC" SERIES. THE ONE PIECE DESIGN ALLOWS THE INSTALLER TO PERFORM HOT LINE WORK.

MATERIAL : "AASC" SERIES - ALUMINUM ALLOT 356 - T6

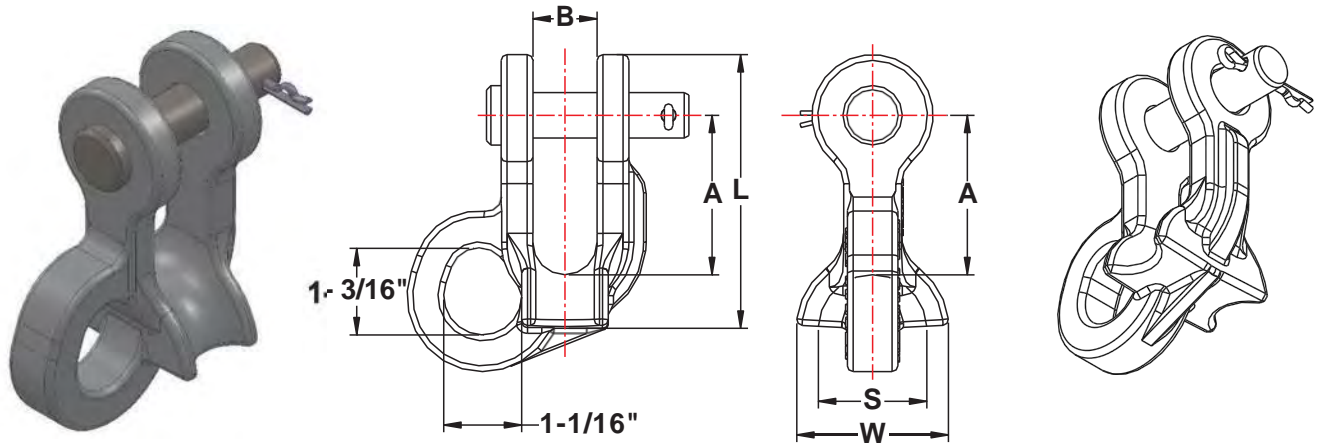
"FASC" SERIES - DUCTILE IRON

HARDWARE AND DUCTILE IRON CLAMPS ARE HOT DIPPED GALVANIZED TO ASTM 153

COTTER KEY - STAINLESS STEEL



THIMBLE CLEVIS PULLING EYE TYPE



CATALOG NUMBER	CONDUCTOR RANGE ACSR	GUY WIRE RANGE	DIM. L	DIM. A	DIM. B	DIM. S	DIM. W	DIM. PD	MATERIAL
PTC- 75A	#6 - #336	3/16" - 5/16"	3 5/8"	1 15/16"	3/4"	1 1/2"	2 1/8"	5/8"	AL
PTC- 88A	#6 - #477	3/16" - 3/8"	3 5/8"	1 15/16"	7/8"	1 1/2"	2 1/8"	5/8"	AL
PTC- 100A	#6 - #650	3/36" - 3/8"	4 1/4"	2 1/4"	1"	1 3/4"	2 5/8"	5/8"	AL
PTC- 75F	#6 - #336	3/16" - 1/2"	3 3/4"	1 15/16"	3/4"	1 1/2"	2 1/8"	5/8"	FE
PTC- 88F	#6 - #477	3/16" - 9/16"	3 5/8"	1 15/16"	7/8"	1 1/2"	2 1/8"	5/8"	FE
PTC- 88LF	#6 - #477	3/16" - 9/16"	4 1/4"	1 15/16"	7/8"	1 1/2"	2 1/8"	3/4"	FE
PTC- 100F	#6 - #650	3/16" - 5/8"	4 1/4"	2 1/4"	1"	1 3/4"	2 5/8"	3/4"	FE

CAT. NO.	ULTIMATE STRENGTH THIMBLE	ULTIMATE STRENGTH EYE
PTC- 75A	10000 LBS.	6000 LBS.
PTC- 88A	12000 LBS.	7000 LBS.
PTC- 100A	15000 LBS.	9000 LBS.
PTC- 75F	25000 LBS.	15000 LBS.
PTC- 88F	20000 LBS.	12000 LBS.
PTC- 88LF	35000 LBS.	21000 LBS.
PTC- 100F	40000 LBS.	24000 LBS.

MATERIAL : FOR "A" TYPE CLEVIS – BODY: ALUMINUM ALLOY 356 – T6
 "F" TYPE CLEVIS – DUCTILE IRON
 CLEVIS PIN : STEEL HOT DIPPED GALVANIZED TO ASTM A 153
 COTTER KEY : STAINLESS STEEL

LINE POST TRUNNION CLAMPS

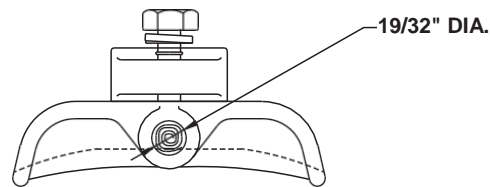
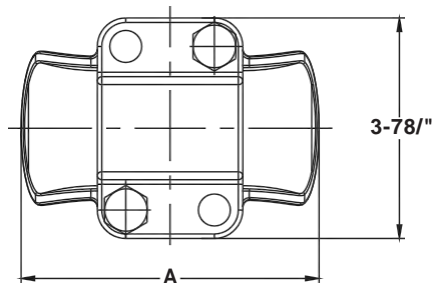
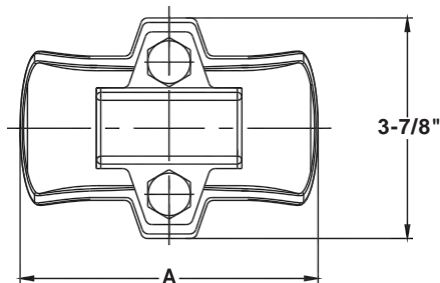


FIG. 1

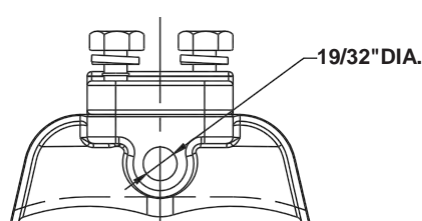


FIG. 2



CATALOG NUMBER	FIG. NO.	CLAMP BODY TYPE	CLAMPING RANGE INCHES	CONDUCTOR RANGE ACSR	CONDUCTOR RANGE ALL ALUMINUM	DIMENSION A INCHES	APPROX. WEIGHT PER 100
LPC - 57	1	ALUMINUM	.23 - .57	#4 - #4/0	#4 - #4/0	5 1/4	81 LBS.
LPC - 86	1	ALUMINUM	.35 - .86	#1/0 - #477 26/7	#1/0 - #556	5 1/4	95 LBS.
LPC - 118	1	ALUMINUM	.50 - 1.18	#3/0 - #954 54/7	#4/0 - #1033	5 1/4	98 LBS.
LPC - 150	1	ALUMINUM	.93 - 1.50	#556.5 - #1510.5	#715.5 - #1590	5 1/4	110 LBS.
LPC - 200	2	ALUMINUM	1.50 - 2.00	#605 - #1113	#795 - #1192.5	5 1/4	172 LBS.
FLPC - 57	1	DUCTILE IRON	.23 - .57	#4 - #4/0	—————	5 1/4	250 LBS.
FLPC - 86	1	DUCTILE IRON	.35 - .86	#1/0 - #477 26/7	—————	5 1/4	260 LBS.
FLPC - 118	1	DUCTILE IRON	.50 - 1.18	#3/0 - 715.5 26/7	—————	5 1/4	273 LBS.
FLPC - 150	1	DUCTILE IRON	.93 - 1.50	#556.5 - 1510.5	—————	5 1/4	295 LBS.
FLPC - 200	2	DUCTILE IRON	1.50 - 2.00	#605 - #1113	—————	5 1/4	310 LBS.

THE ABOVE TRUNNION CLAMPS ARE USED WITH CLAMP TOP LINE POST INSULATORS. THE REVERSIBLE KEEPER GIVES THE INSTALLER A WIDE CONDUCTOR RANGE. EACH CLAMP CONTAINS A RIV SUPPRESSOR SPRING.

MATERIAL FOR "LPC" TYPE : BODY & KEEPER-ALUMINUM ALLOY 356-T6.

MATERIAL FOR "FLPC" TYPE : DUCTILE IRON HOT DIPPED GALVANIZED TO ASTM A153.