



INDEX

SECTION 13 – OPGW / ADSS FITTINGS

FORMED GRIP DEAN-END SHORT SPAN ADSS -----	13-1
FORMED GRIP DEAD-END MEDIUM SPAN ADSS-----	13-2
FORMED GRIP DEAD-END LONG SPAN ADSS -----	13-3
SUSPENSION UNITS 100/200m (328/656 FT) -----	13-4
FORMED GRIP ADSS SUSPENSION UNITS MEDIUM / LONG SPAN -----	13-5A
FORMED GRIP ADSS SUSPENSION UNITS MEDIUM / LONG SPAN -----	13-5B
FORMED GRIP ADSS SUSPENSION UNITS MEDIUM / LONG SPAN -----	13-5C
DOUBLE FORMED GRIP ADSS SUSPENSION UNITS -----	13-6
FORMED GRIP DEAD-END FOR OPGW-----	13-7
FORMED GRIP SUSPENSION UNITS FOR OPGW -----	13-8A
FORMED GRIP SUSPENSION UNITS FOR OPGW -----	13-8B
DOUBLE FORMED GRIP SUSPENSION UNITS FOR OPGW-----	13-9A
DOUBLE FORMED GRIP SUSPENSION UNITS FOR OPGW-----	13-9B
ACCESSORIES -----	13-10A
ACCESSORIES -----	13-10B
FASTENING CLAMPS -----	13-11
SPIRAL VIBRATION DAMPER-----	13-12
STOCKBRIDGE VIBRATION DAMPER & ARMOR GUARDS-----	13-13A
STOCKBRIDGE VIBRATION DAMPER & ARMOR GUARDS-----	13-13B



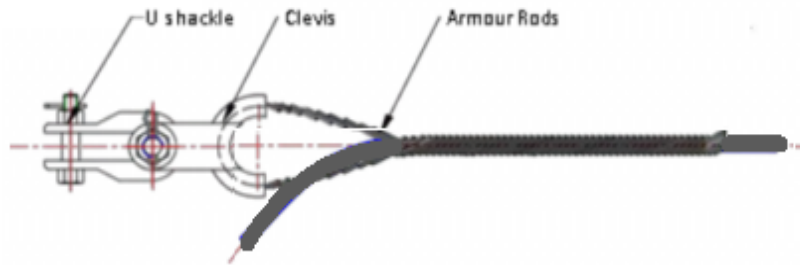
JOINT BOXES -----13-14

CABLE STORAGE ASSEMBLIES -----13-15

TANGENT SUPPORT CLAMPS -----13-16



FORMED GRIP DEAD-END SHORT SPAN ADSS



MODEL.	CABLE DIAMETER mm (in)	LENGTH mm(in)	WEIGHT Kg (Lbs)	GENERAL ASSEMBLY	
				U-STYLE	THIMBLE CLEVIS
ANJ 0950	9.0-9.5 (.35-.37)	800mm 31.5"	0.38 kg (0.84 lb)	U-7	XH 020
ANJ 1050	9.6-10.5 (.38-.41)	850mm 33.5"	0.49 kg (1.08 lb)	U-7	XH 020
ANJ 1160	10.6-11.6 (.42-.46)	900mm 35.4"	0.52 kg (1.14 lb)	U-7	XH 020
ANJ 1280	11.7-12.8 (.46-.50)	960mm 37.8"	0.65 kg (1.43 lb)	U-7	XH 020
ANJ 1410	12.9-14.1 (.51-.56)	1080mm 42.5"	0.82 kg (1.80 lb)	U-7	XH 020
ANJ 1560	14.2-15.6 (.56-.61)	1160mm 45.7"	1.22 kg (2.68 lb)	U-7	XH 020

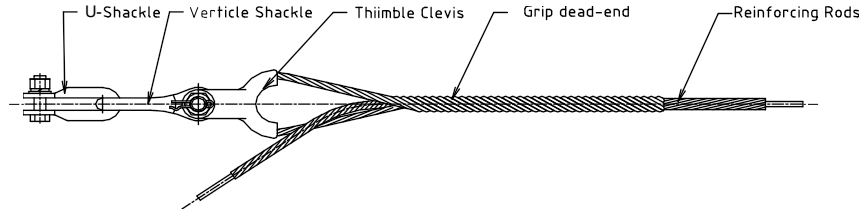
FEATURES: SPAN LENGTH < 100M (328')

MATERIAL:

- * DEAD-END -- ALUMINUM CLAD STEEL RODS
- * THIMBLE – HOT DIPPED GALVANIZED STEEL



FORMED GRIP DEAD-END MEDIUM SPAN ADSS



MODEL.	CABLE DIAMETER mm (in)	STRENGTH kN (Lb)	SPAN m(ft)	GRIP LENGTH mm(in)	ROD LENGTH mm(in)	WEIGHT Kg (Lbs)	GENERAL ASSEMBLY		
							VERTICAL SHACKLE/ EXTENSION LINK	THIMBLE CLEVIS	U-SHACKLE
ANY 0940 20	8.6-9.4 (0.34-0.37")	20kN (4496 Lb)	200/300m 656-984'	800mm 31.5"	1100mm 43.3"	0.88 kg (1.94 lb)	ZH-7	XH 020	U-7
ANY 1010 20	9.5-10.1 (0.37-0.40")	20kN (4496 Lb)	200/300m 656-984'	800mm 31.5"	1100mm 43.3"	1.02 kg (2.24 lb)	ZH-7	XH 020	U-7
ANY 1070 20	10.2-10.7 (0.40-0.42")	20kN (4496 Lb)	200/300m 656-984'	800mm 31.5"	1100mm 43.3"	1.06 kg (2.33 lb)	ZH-7	XH 020	U-7
ANY 1140 20	10.8-11.4 (0.42-0.45")	20kN (4496 Lb)	200/300m 656-984'	800mm 31.5"	1100mm 43.3"	1.08 kg (2.38 lb)	ZH-7	XH 020	U-7
ANY 1220 20	11.5-12.2 (0.45-0.48")	20kN (4496 Lb)	200/300m 656-984'	800mm 31.5"	1100mm 43.3"	1.35 kg (2.97 lb)	ZH-7	XH 020	U-7
ANY 1290 20	12.3-12.9 (0.48-0.51")	20kN (4496 Lb)	200/300m 656-984'	800mm 31.5"	1100mm 43.3"	1.38 kg (3.04 lb)	ZH-7	XH 020	U-7
ANY 1370 20	13.0-13.7 (0.51-.54")	20kN (4496 Lb)	200/300m 656-984'	800mm 31.5"	1100mm 43.3"	1.54 kg (3.39 lb)	ZH-7	XH 020	U-7
ANY 1460 20	13.8-14.6 (0.54-.57")	20kN (4496 Lb)	200/300m 656-984'	800mm 31.5"	1100mm 43.3"	1.54 kg (3.39 lb)	ZH-7	XH 020	U-7
ANY 1550 20	14.7-15.5 (0.58-.61")	20kN (4496 Lb)	200/300m 656-984'	800mm 31.5"	1100mm 43.3"	1.54 kg (3.39 lb)	ZH-7	XH 020	U-7
ANY 0940 30	8.6-9.4 (0.34-0.37")	30kN (6744 Lb)	300/400m 984-1312'	1100mm 43.3"	1400mm 55.1"	1.57 kg (3.46 lb)	ZH-7	XH 020	U-7
ANY 1010 30	9.5-10.1 (0.37-0.40")	30kN (6744 Lb)	300/400m 984-1312'	1100mm 43.3"	1400mm 55.1"	1.6 kg (3.53 lb)	ZH-7	XH 020	U-7
ANY 1070 30	10.2-10.7 (0.40-0.42")	30kN (6744 Lb)	300/400m 984-1312'	1100mm 43.3"	1400mm 55.1"	1.06 kg (2.33 lb)	ZH-7	XH 020	U-7
ANY 1140 30	10.8-11.4 (0.42-0.45")	30kN (6744 Lb)	300/400m 984-1312'	1100mm 43.3"	1400mm 55.1"	1.08 kg (2.38 lb)	ZH-7	XH 020	U-7
ANY 1220 30	11.5-12.2 (0.45-0.48")	30kN (6744 Lb)	300/400m 984-1312'	1100mm 43.3"	1400mm 55.1"	1.35 kg (2.97 lb)	ZH-7	XH 020	U-7
ANY 1290 30	12.3-12.9 (0.48-0.51")	30kN (6744 Lb)	300/400m 984-1312'	1100mm 43.3"	1400mm 55.1"	1.38 kg (3.04 lb)	ZH-7	XH 020	U-7
ANY 1370 30	13.0-13.7 (0.51-.54")	30kN (6744 Lb)	300/400m 984-1312'	1100mm 43.3"	1400mm 55.1"	2.04kg (4.49lb)	ZH-7	XH 020	U-7
ANY 1460 30	13.8-14.6 (0.54-.57")	30kN (6744 Lb)	300/400m 984-1312'	1100mm 43.3"	1400mm 55.1"	2.08kg (4.58lb)	ZH-7	XH 020	U-7
ANY 1550 30	14.7-15.5 (0.58-.61")	30kN (6744 Lb)	300/400m 984-1312'	1100mm 43.3"	1400mm 55.1"	2.12kg (4.66lb)	ZH-7	XH 020	U-7

FEATURES: SPAN LENGTH 200m (656') – 400m (1312')

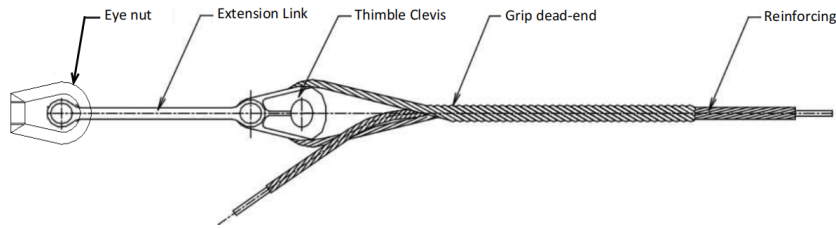
MATERIAL:

- * ARMOR RODS -- ALUMINUM CLAD STEEL RODS
- * DEAD-END -- ALUMINUM CLAD STEEL RODS
- * THIMBLE – HOT DIPPED GALVANIZED DUCTILE IRON (STRENGTH 70Kn/157361Lbs)

ADDITIONAL PRODUCTS AVAILABLE, CONTACT US FOR ANY ITEMS NOT LISTED HERE



FORMED GRIP DEAD-END LONG SPAN ADSS



MODEL.	CABLE DIAMETER mm (in)	STRENGTH kN (Lb)	SPAN m(ft)	GRIP LENGTH mm(in)	ROD LENGTH mm(in)	WEIGHT Kg (Lbs)	GENERAL ASSEMBLY		
							VERTICAL SHACKLE/ EXTENSION LINK	THIMBLE CLEVIS	EYE NUT
ANY 1220 40	11.5-12.2 (0.45-.48")	40kN (89992 Lb)	400/500m 1312-1640'	1260mm 49.6"	1800mm 70.9"	2.14 kg (4.71 lb)	TYC 300 080	XH 080	U1092
ANY 1290 40	12.3-12.9 (0.48-.51")	40kN (89992 Lb)	400/500m 1312-1640'	1260mm 49.6"	1800mm 70.9"	2.19 kg (4.82 lb)	TYC 300 080	XH 080	U1092
ANY 1370 40	13.0-13.7 (0.51-.54")	40kN (89992 Lb)	400/500m 1312-1640'	1260mm 49.6"	1800mm 70.9"	2.44 kg (5.37 lb)	TYC 300 080	XH 080	U1092
ANY 1460 40	13.8-14.6 (0.54-.57")	40kN (89992 Lb)	400/500m 1312-1640'	1260mm 49.6"	1800mm 70.9"	2.49 kg (5.48 lb)	TYC 300 080	XH 080	U1092
ANY 1550 40	14.7-15.5 (0.58-.61")	40kN (89992 Lb)	400/500m 1312-1640'	1260mm 49.6"	1800mm 70.9"	2.54 kg (5.60 lb)	TYC 300 080	XH 080	U1092
ANY 1650 40	15.6-16.5 (0.61-.65")	40kN (89992 Lb)	400/500m 1312-1640'	1260mm 49.6"	1800mm 70.9"	2.92 kg (6.42 lb)	TYC 300 080	XH 080	U1092
ANY 1370 50	13.0-13.7 (0.51-.54")	50kN (11240 Lb)	500-700m 1640-2296'	1400mm 55.1"	2000mm 78.7"	2.7 kg (5.9 lb)	TYC 300 080	XH 080	U1092
ANY 1460 50	13.8-14.6 (0.54-.57")	50kN (11240 Lb)	500-700m 1640-2296'	1400mm 55.1"	2000mm 78.7"	2.76 kg (6.07 lb)	TYC 300 080	XH 080	U1092
ANY 1550 50	14.7-15.5 (0.58-.61")	50kN (11240 Lb)	500-700m 1640-2296'	1400mm 55.1"	2000mm 78.7"	2.81 kg (6.18 lb)	TYC 300 080	XH 080	U1092
ANY 1650 50	15.6-16.5 (0.61-.65")	50kN (11240 Lb)	500-700m 1640-2296'	1400mm 55.1"	2000mm 78.7"	3.23 kg (7.11 lb)	TYC 300 080	XH 080	U1092
ANY 1370 60	13.0-13.7 (0.51-.54")	60kN (13488 Lb)	600-800m 1968-2624'	1560mm 61.4"	2200mm 86.6"	2.98 kg (6.56 lb)	TYC 300 080	XH 080	U1092
ANY 1460 60	13.8-14.6 (0.54-.57")	60kN (13488 Lb)	600-800m 1968-2624'	1560mm 61.4"	2200mm 86.6"	3.04kg (6.69lb)	TYC 300 080	XH 080	U1092
ANY 1550 60	14.7-15.5 (0.58-.61")	60kN (13488 Lb)	600-800m 1968-2624'	1560mm 61.4"	2200mm 86.6"	3.11kg (6.84lb)	TYC 300 080	XH 080	U1092
ANY 1650 60	15.6-16.5 (0.61-.65")	60kN (13488 Lb)	600-800m 1968-2624'	1560mm 61.4"	2200mm 86.6"	3.57kg (7.85lb)	TYC 300 080	XH 080	U1092
ANY 1460 70	13.8-14.6 (0.54-.57")	70kN (15736 Lb)	700-900m 2296-2952'	1600mm 63.0"	2400mm 94.5"	3.2kg (7.04lb)	TYC 300 080	XH 080	U1092
ANY 1550 70	14.7-15.5 (0.58-.61")	70kN (15736 Lb)	700-900m 2296-2952'	1600mm 63.0"	2400mm 94.5"	3.27kg (7.19lb)	TYC 300 080	XH 080	U1092
ANY 1650 70	15.6-16.5 (0.61-.65")	70kN (15736 Lb)	700-900m 2296-2952'	1600mm 63.0"	2400mm 94.5"	3.77kg (8.29lb)	TYC 300 080	XH 080	U1092
ANY 1750 70	16.6-17.5 (0.65-.69")	70kN (15736 Lb)	700-900m 2296-2952'	1600mm 63.0"	2400mm 94.5"	4.12kg (9.06lb)	TYC 300 080	XH 080	U1092
ANY 1870 70	17.6-18.7 (0.69-.74)	70kN (15736 Lb)	700-900m 2296-2952'	1600mm 63.0"	2400mm 94.5"	4.64kg (10.21lb)	TYC 300 080	XH 080	U1092
ANY 1550 80	14.7-15.5 (0.58-.61")	80kN (17984 Lb)	800-1000m 2624-3280'	2000mm 78.7"	3000mm 118.1"	4.08kg (8.98lb)	TYC 300 120	XH 120	U1092
ANY 1650 80	15.6-16.5 (0.61-.65")	80kN (17984 Lb)	800-1000m 2624-3280'	2000mm 78.7"	3000mm 118.1"	4.71kg (10.36lb)	TYC 300 120	XH 120	U1092
ANY 1750 80	16.6-17.5 (0.65-.69")	80kN (17984 Lb)	800-1000m 2624-3280'	2000mm 78.7"	3000mm 118.1"	5.14kg (11.31lb)	TYC 300 120	XH 120	U1092
ANY 1870 80	17.6-18.7 (0.69-.74)	80kN (17984 Lb)	800-1000m 2624-3280'	2000mm 78.7"	3000mm 118.1"	5.79kg (12.74lb)	TYC 300 120	XH 120	U1092

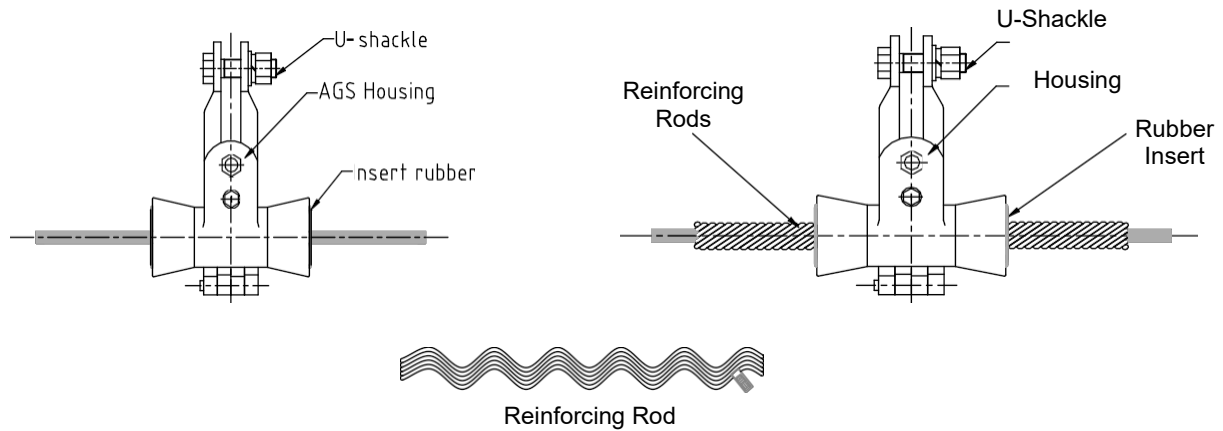
MATERIAL:

- * ARMOR RODS – ALUMINUM CLAD STEEL RODS
- * DEAD-END – ALUMINUM CLAD STEEL RODS
- * THIMBLE – HOT DIPPED GALVANIZED DUCTILE IRON (STRENGTH 70Kn / 157361 lbs)

FEATURES: SPAN LENGTH 200m (656') – 1000m (3280')



SUSPENSION UNITS 100/200m (328/656')

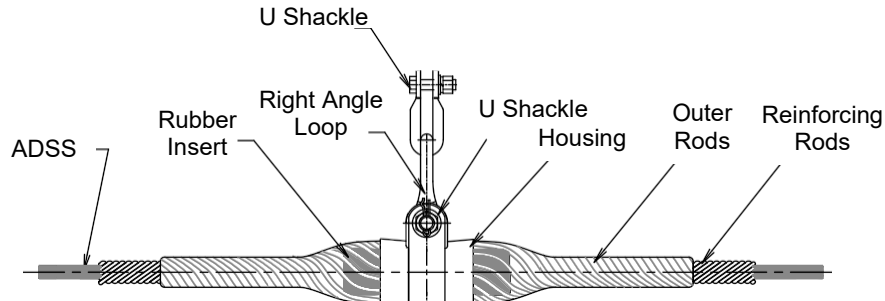


NAME.	SPECIFICATI ON	CABLE DIAMETER mm (in)	SPAN m(ft)	ROD LENGTH mm(in)	WEIGHT Kg (Lbs)	GENERAL ASSEMBLY	
						SUSPENSION WEIGHT	U- SHACKLE
ADSS SUSPENSION UNITS 100m	AXQ 1110	9.0-11.1 (0.35-0.44")	100m 328'	--	--	XGT-02-111 1.08kg (2.38lb)	U-7
	AXQ 1330	11.2-13.3 (0.44-0.52")	100m 328'	--	--	XGT-02-133 1.04kg (2.29lb)	U-7
	AXQ 1550	13.4-15.5 (0.53-0.61")	100m 328'	--	--	XGT-02-155 1.00kg (2.2lb)	U-7
ADSS SUSPENSION UNITS 200m	AXD 1010	9.7-10.1 (0.38-0.40")	200m 656'	800mm 31.5"	0.3 kg (0.66 lb)	XGT-02-197 0.98kg (2.16lb)	U-7
	AXD 1060	10.2-10.6 (0.40-0.42")	200m 656'	800mm 31.5"	0.3 kg (0.66 lb)	XGT-02-197 0.98kg (2.16lb)	U-7
	AXD 1110	10.7-11.1 (0.42-0.44")	200m 656'	800mm 31.5"	0.3 kg (0.66 lb)	XGT-02-197 0.98kg (2.16lb)	U-7
	AXD 1160	11.2-11.6 (0.44-.46")	200m 656'	800mm 31.5"	0.33 kg (0.73 lb)	XGT-02-219 0.94kg (2.07lb)	U-7
	AXD 1170	11.7-11.7 (0.46-.46")	200m 656'	800mm 31.5"	0.33 kg (0.73 lb)	XGT-02-219 0.94kg (2.07lb)	U-7
	AXD 1200	11.8-12.0 (0.46-.47")	200m 656'	860mm 33.9"	0.36 kg (0.79 lb)	XGT-02-219 0.94kg (2.07lb)	U-7
	AXD 1270	12.1-12.7 (0.48-.5")	200m 656'	860mm 33.9"	0.36 kg (0.79 lb)	XGT-02-219 0.94kg (2.07lb)	U-7
	AXD 1290	12.8-12.9 (0.5-.51")	200m 656'	900mm 35.4"	0.41 kg (0.9 lb)	XGT-02-219 0.94kg (2.07lb)	U-7
	AXD 1360	13.0-13.6 (0.51-.54")	200m 656'	900mm 35.4"	0.41 kg (0.9 lb)	XGT-02-219 0.94kg (2.07lb)	U-7
	AXD 1410	13.7-14.1 (0.54-.56")	200m 656'	900mm 35.4"	0.41 kg (0.9 lb)	XGT-02-241 0.9kg (1.98lb)	U-7
	AXD 1430	14.2-14.3 (0.55-.55")	200m 656'	1000mm 39.4"	0.5 kg (1.1 lb)	XGT-02-241 0.9kg (1.98lb)	U-7
	AXD 1450	14.4-14.5 (0.56-.57")	200m 656'	1000mm 39.4"	0.5 kg (1.1 lb)	XGT-02-241 0.9kg (1.98lb)	U-7
	AXD 1510	14.6-15.1 (0.57-.59")	200m 656'	1000mm 39.4"	0.5 kg (1.1 lb)	XGT-02-241 0.9kg (1.98lb)	U-7

MATERIAL:

- * ARMOR RODS – ALUMINUM ALLOY
- * HOUSING – ALUMINUM ALLOY
- * INSERT – EPDM RUBBER

FORMED GRIP ADSS SUSPENSION UNITS MEDIUM / LONG SPAN



MODEL.	CABLE DIAMETER mm (in)	OUTER ROD LENGTH mm (in)	REINFORCING ROD LENGTH mm(in)	SPAN m(ft)	WEIGHT Kg (Lbs)	GENERAL ASSEMBLY	
						SUSPENSION	U-SHACKLE
AXY 0960 400	9.0-9.6 (0.35-0.38")	1100mm 43.3"	1600mm 63.0"	300/400m 984-1312'	1.53 kg (3.37 lb)	ZH-7	U-7
AXY 1010 400	9.7-10.1 (0.38-0.40")	1100mm 43.3"	1600mm 63.0"	300/400m 984-1312'	1.59 kg (3.51 lb)	ZH-7	U-7
AXY 1060 400	10.2-10.6 (0.40-0.42")	1100mm 43.3"	1600mm 63.0"	300/400m 984-1312'	1.69 kg (3.73 lb)	ZH-7	U-7
AXY 1110 400	10.7-11.1 (0.42-0.44")	1100mm 43.3"	1600mm 63.0"	300/400m 984-1312'	1.69 kg (3.73 lb)	ZH-7	U-7
AXY 1160 400	11.2-11.6 (0.44-.46")	1100mm 43.3"	1600mm 63.0"	300/400m 984-1312'	1.76 kg (3.88 lb)	ZH-7	U-7
AXY 1170 400	11.7-11.7 (0.46-.46")	1100mm 43.3"	1600mm 63.0"	300/400m 984-1312'	1.76 kg (3.88 lb)	ZH-7	U-7
AXY 1200 400	11.8-12.0 (0.46-.47")	1200mm 47.2"	1720mm 67.7"	300/400m 984-1312'	1.9 kg (4.19 lb)	ZH-7	U-7
AXY 1270 400	12.1-12.7 (0.48-0.5")	1200mm 47.2"	1720mm 67.7"	300/400m 984-1312'	1.9 kg (4.21 lb)	ZH-7	U-7
AXY 1290 400	12.8-12.9 (0.5-0.51")	1200mm 47.2"	1720mm 67.7"	300/400m 984-1312'	2.08 kg (4.59 lb)	ZH-7	U-7
AXY 1360 400	13.0-13.6 (0.51-0.54")	1300mm 51.1"	1840mm 72.4"	300/400m 984-1312'	2.25 kg (4.96 lb)	ZH-7	U-7
AXY 1410 400	13.7-14.1 (0.54-0.56")	1300mm 51.1"	1840mm 72.4"	300/400m 984-1312'	2.25 kg (4.96 lb)	ZH-7	U-7
AXY 1430 400	14.2-14.3 (0.55-0.55")	1300mm 51.1"	1840mm 72.4"	300/400m 984-1312'	2.44 kg (5.38 lb)	ZH-7	U-7
AXY 1450 400	14.4-14.5 (0.56-0.57")	1300mm 51.1"	1840mm 72.4"	300/400m 984-1312'	2.44 kg (5.38 lb)	ZH-7	U-7
AXY 1510 400	14.6-15.1 (0.57-0.59")	1300mm 51.1"	1840mm 72.4"	300/400m 984-1312'	2.44 kg (5.38 lb)	ZH-7	U-7

MATERIAL:

- * ARMOR RODS – ALUMINUM ALLOY
- * HOUSING – ALUMINUM ALLOY
- * INSERT – EPDM RUBBER

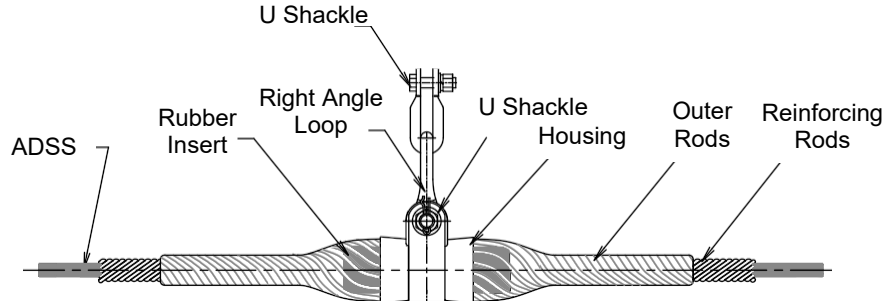
STRENGTH 70KN (15736LBS). HOLDING STRENGTH NO LESS THAN 10-20% OF ADSS CABLE. SUITABLE FOR ANGLES LESS THAN 30°. FOR ANGLES BETWEEN 30° – 60°, DOUBLE ARMOR GRIP SUSPENSION UNITS ARE RECOMMENDED.

FOR GENERAL ASSEMBLY, U-7 AND ZH-7 ARE USUALLY APPLIED. OTHER LINKS FOUND IN APPENDIXES.

ADDITIONAL PRODUCTS AVAILABLE, CONTACT US FOR ANY ITEMS NOT LISTED HERE



FORMED GRIP ADSS SUSPENSION UNITS MEDIUM / LONG SPAN



MODEL.	CABLE DIAMETER mm (in)	OUTER ROD LENGTH mm (in)	REINFORCING ROD LENGTH mm(in)	SPAN m(ft)	WEIGHT Kg (Lbs)	GENERAL ASSEMBLY	
						SUSPENSION	U-SHACKLE
AXY 1270 600	12.1-12.7 (0.48-0.5")	1300mm 51.1"	1800mm 70.9"	500/600m 1640-1968'	2.03 kg (4.48 lb)	ZH-7	U-7
AXY 1290 600	12.8-12.9 (0.5-0.51")	1300mm 51.1"	1800mm 70.9"	500/600m 1640-1968'	2.23 kg (4.92 lb)	ZH-7	U-7
AXY 1360 600	13.0-13.6 (0.51-0.54")	1360mm 53.5"	1920mm 75.6"	500/600m 1640-1968'	2.34 kg (5.16 lb)	ZH-7	U-7
AXY 1410 600	13.7-14.1 (0.54-0.56")	1360mm 53.5"	1920mm 75.6"	500/600m 1640-1968'	2.35 kg (5.18 lb)	ZH-7	U-7
AXY 1430 600	14.2-14.3 (0.55-0.55")	1360mm 53.5"	1920mm 75.6"	500/600m 1640-1968'	2.55 kg (5.62 lb)	ZH-7	U-7
AXY 1450 600	14.4-14.5 (0.56-0.57")	1400mm 55.1"	2000mm 78.7"	500/600m 1640-1968'	2.63 kg (5.8 lb)	ZH-7	U-7
AXY 1510 600	14.6-15.1 (0.57-0.59")	1400mm 55.1"	2000mm 78.7"	500/600m 1640-1968'	2.63 kg (5.8 lb)	ZH-7	U-7
AXY 1580 600	15.2-15.8 (0.60-0.62")	1400mm 55.1"	2000mm 78.7"	500/600m 1640-1968'	2.63 kg (5.8 lb)	ZH-7	U-7
AXY 1600 600	15.9-16.0 (0.63-0.63")	1520mm 59.8"	2120mm 83.5"	500/600m 1640-1968'	2.92 kg (6.44 lb)	ZH-7	U-7
AXY 1690 600	16.1-16.9 (0.64-0.67")	1520mm 59.8"	2120mm 83.5"	500/600m 1640-1968'	2.92 kg (6.44 lb)	ZH-7	U-7

MATERIAL:

- * ARMOR RODS – ALUMINUM ALLOY
- * HOUSING – ALUMINUM ALLOY
- * INSERT – EPDM RUBBER

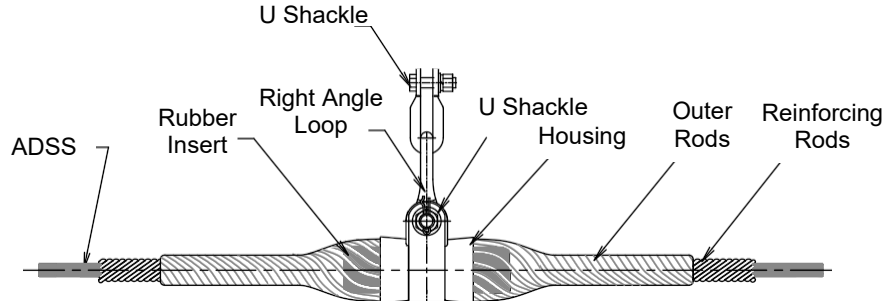
STRENGTH 70KN (15736LBS). HOLDING STRENGTH NO LESS THAN 10-20% OF ADSS CABLE. SUITABLE FOR ANGLES LESS THAN 30°. FOR ANGLES BETWEEN 30° – 60°, DOUBLE ARMOR GRIP SUSPENSION UNITS ARE RECOMMENDED.

FOR GENERAL ASSEMBLY, U-7 AND ZH-7 ARE USUALLY APPLIED. OTHER LINKS FOUND IN APPENDIXES.

ADDITIONAL PRODUCTS AVAILABLE, CONTACT US FOR ANY ITEMS NOT LISTED HERE



FORMED GRIP ADSS SUSPENSION UNITS MEDIUM / LONG SPAN



MODEL.	CABLE DIAMETER mm (in)	OUTER ROD LENGTH mm (in)	REINFORCING ROD LENGTH mm(in)	SPAN m(ft)	WEIGHT Kg (Lbs)	GENERAL ASSEMBLY	
						SUSPENSION	U-SHACKLE
AXY 1430 800	14.2-14.3 (0.55-0.55")	1460mm 57.5"	2060mm 78.7"	700/800m 2296-2625'	2.73 kg (6.01 lb)	ZH-7	U-7
AXY 1450 800	14.4-14.5 (0.56-0.57")		2120mm 83.5"		2.77 kg (6.09 lb)		
AXY 1510 800	14.6-15.1 (0.57-0.59")		2.77 kg (6.09 lb)				
AXY 1580 800	15.2-15.8 (0.60-0.62")	1480mm 58.3"	2.79 kg (6.14 lb)				
AXY 1600 800	15.9-16.0 (0.63-0.63")	1580mm 62.2"	2200mm 86.6"		3.04 kg (6.7 lb)		
AXY 1690 800	16.1-16.9 (0.64-0.67")		3.04 kg (6.7 lb)				
AXY 1730 800	17.0-17.3 (0.67-0.68")		3.28 kg (7.22 lb)				
AXY 1800 800	17.4-18.0 (0.69-0.71")		3.28 kg (7.22 lb)				
AXY 1580 1000	15.2-15.8 (0.60-0.62")	1680mm 66.1"	2590mm 102"	900/1000m 2252-3281'	3 kg (6.6 lb)		
AXY 1600 1000	15.9-16.0 (0.63-0.63")				3.37 kg (7.4 lb)		
AXY 1690 1000	16.1-16.9 (0.64-0.67")				3.37 kg (7.4 lb)		
AXY 1730 1000	17.0-17.3 (0.67-0.68")				3.63 kg (7.99 lb)		
AXY 1800 1000	17.4-18.0 (0.69-0.71")				3.63 kg (7.99 lb)		
AXY 1880 1000	18.1-18.8 (0.71-0.74")				3.63 kg (7.99 lb)		

MATERIAL:

- * ARMOR RODS – ALUMINUM ALLOY
- * HOUSING – ALUMINUM ALLOY
- * INSERT – EPDM RUBBER

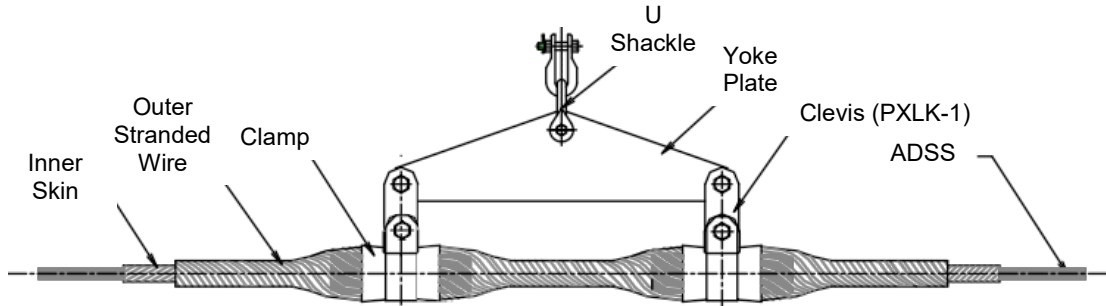
STRENGTH 70KN (15736LBS). HOLDING STRENGTH NO LESS THAN 10-20% OF ADSS CABLE. SUITABLE FOR ANGLES LESS THAN 30°. FOR ANGLES BETWEEN 30° – 60°, DOUBLE ARMOR GRIP SUSPENSION UNITS ARE RECOMMENDED.

FOR GENERAL ASSEMBLY, U-7 AND ZH-7 ARE USUALLY APPLIED. OTHER LINKS FOUND IN APPENDIXES.

ADDITIONAL PRODUCTS AVAILABLE, CONTACT US FOR ANY ITEMS NOT LISTED HERE



DOUBLE FORMED GRIP ADSS SUSPENSION UNITS



MODEL.	CABLE DIAMETER mm (in)	OUTER ROD LENGTH mm (in)	REINFORCING ROD LENGTH mm(in)	WEIGHT Kg (Lbs)	GENERAL ASSEMBLY	
					LINK BOARD	LINKS
AXS 0960	9.0-9.6 (0.35-0.38")	1800mm (70.8")	2200mm 86.6"	2.36 kg (5.19 lb)	L-1040	U-7
AXS 1010	9.7-10.1 (0.38-0.40")			2.45 kg (5.39 lb)		
AXS 1060	10.2-10.6 (0.40-0.42")			2.61 kg (5.74 lb)		
AXS 1110	10.7-11.1 (0.42-0.44")			2.61 kg (5.74 lb)		
AXS 1160	11.2-11.6 (0.44-.46")			2.7 kg (5.94 lb)		
AXS 1170	11.7-11.7 (0.46-.46")			2.7 kg (5.94 lb)		
AXS 1200	11.8-12.0 (0.46-.47")	1900mm 74.8"	2400mm 94.5"	2.88 kg (6.34 lb)	SXB-475	
AXS 1270	12.1-12.7 (0.48-0.5")			2.88 kg (6.34 lb)		
AXS 1290	12.8-12.9 (0.5-0.51")			3.15 kg (6.93 lb)		
AXS 1360	13.0-13.6 (0.51-0.54")			3.15 kg (6.93 lb)		
AXS 1410	13.7-14.1 (0.54-0.56")	2100mm 82.7"	2700mm 106.3"	3.5 kg (7.7 lb)	SXB-475	
AXS 1430	14.2-14.3 (0.55-0.55")			3.81 kg (8.38 lb)		
AXS 1450	14.4-14.5 (0.56-0.57")			3.81 kg (8.38 lb)		
AXS 1510	14.6-15.1 (0.57-0.59")			3.81 kg (8.38 lb)		
AXS 1580	15.2-15.8 (0.60-0.62")			3.81 kg (8.38 lb)		
AXS 1600	15.9-16.0 (0.63-0.63")			3.92 kg (8.62 lb)		
AXS 1690	16.1-16.9 (0.64-0.67")	2400mm 94.5"	3000mm 118.1"	4.43 kg (9.75 lb)	SXB-550	
AXS 1730	17.0-17.3 (0.67-0.68")			4.78 kg (10.52 lb)		
AXS 1800	17.4-18.0 (0.69-0.71")			4.78 kg (10.52 lb)		
AXS 1880	18.1-18.8 (0.71-0.74")			4.78 kg (10.52 lb)		

MATERIAL:

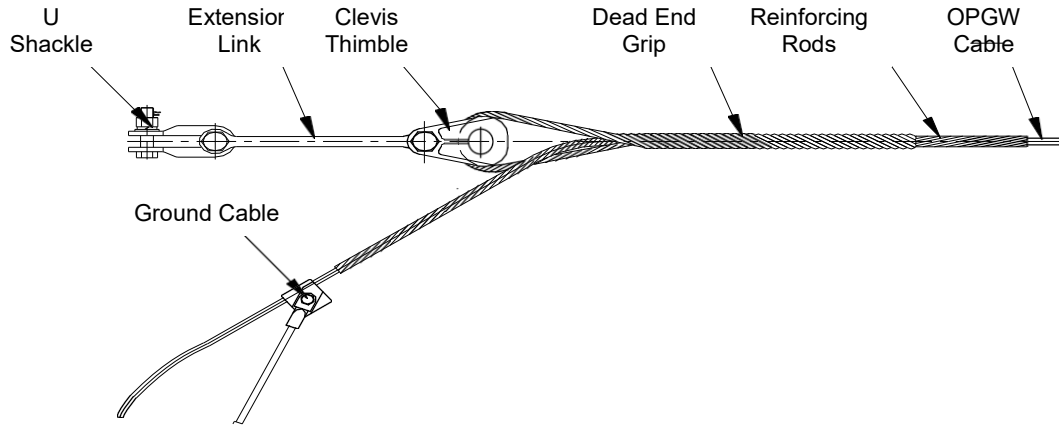
- * ARMOR RODS – ALUMINUM ALLOY
- * HOUSING – ALUMINUM ALLOY
- * INSERT – EPDM RUBBER

HOLDING STRENGTH NO LESS THAN 20% OF ADSS CABLE. FOR ANGLES BETWEEN 30° – 60°, DOUBLE ARMOR GRIP SUSPENSION UNITS ARE RECOMMENDED. GENERAL ASSEMBLY ITEMS LISTED. OTHER LINKS FOUND IN APPENDIXES.

ADDITIONAL PRODUCTS AVAILABLE, CONTACT US FOR ANY ITEMS NOT LISTED HERE



FORMED GRIP DEAD-END FOR OPGW



MODEL.	CABLE DIAMETER mm (in)	STRENGTH kN (Lb)	OUTER ROD LENGTH mm (in)	REINFORCING ROD LENGTH mm(in)	WEIGHT Kg (Lbs)	GENERAL ASSEMBLY		
						EXTENSION LINK	THIMBLE CLEVIS	U-SHACKLE
ONY 0780	7.2-7.8 (0.28-.31")	70kN (15736 Lb)	1000mm (39.4")	1400mm (55.1")	1.10 kg (2.42 lb)	XH-080		
ONY 0880	7.9-8.8 (0.31-.35")				1.15 kg (2.5 lb)			
ONY 1010	8.9-10.1 (0.35-.40")				1.28 kg (2.82 lb)			
ONY 1140	10.2-11.4 (0.40-.45")	112kN (25178 Lb)	1120mm (44.1")	1540mm (60.6")	1.70 kg (3.74 lb)	XH 120		
ONY 1280	11.5-12.8 (0.45-.50")				2.41 kg (5.3 lb)			
ONY 1410	12.9-14.1 (0.51-.56")				2.55 kg (5.61 lb)			
ONY 1550	14.2-15.5 (0.56-.61")				2.89 kg (6.36 lb)			
ONY 1730	15.6-17.3 (0.61-.68")				3.61 kg (7.94 lb)			
ONY 1920	17.4-19.2 (0.69-.76")				4.68 kg (10.3 lb)			
ONY 2110	19.3-21.1 (0.76-.83")				5.14 kg (11.31 lb)			

MATERIAL:

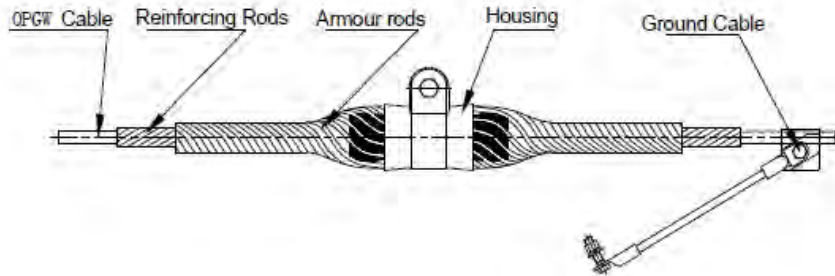
- * ARMOR RODS – ALUMINUM CLAD STEEL RODS
- * DEAD-END – ALUMINUM CLAD STEEL RODS
- * THIMBLE – HOT DIPPED GALVANIZED DUCTILE IRON (STRENGTH 70Kn / 120Kn 157361/269796 lbs)

GENERAL ASSEMBLY ITEMS LISTED. OTHER LINKS FOUND IN APPENDIXES.

ADDITIONAL PRODUCTS AVAILABLE, CONTACT US FOR ANY ITEMS NOT LISTED HERE



FORMED GRIP SUSPENSION UNITS FOR OPGW



MODEL.	CABLE DIAMETER mm (in)	OUTER ROD LENGTH mm (in)	REINFORCING ROD LENGTH mm(in)	WEIGHT Kg (Lbs)	COLOR	GENERAL ASSEMBLY	
						LENGTH mm(in)	SPECIFICATION
OXY 0800	7.4-8.0 (0.29-.31")	1100mm 43.3"	1650mm 65"	1.27 kg (2.8 lb)	Blue	400mm (15.7")	L-1040
OXY 0880	8.1-8.8 (0.32-.35")	1100mm 43.3"	1650mm 65"	1.37 kg (3.01 lb)	Green		
OXY 0960	8.9-9.6 (0.35-.38")	1140mm 44.9"	1690mm 66.5"	1.49 kg (3.28 lb)	Yellow		
OXY 1010	9.7-10.1 (0.38-.40)	1140mm 44.9"	1690mm 66.5"	1.49 kg (3.28 lb)	Black		
OXY 1060	10.2-10.6 (0.40-.42")	1140mm 44.9"	1690mm 66.5"	1.56 kg (3.43 lb)	White		
OXY 1110	10.7-11.1 (0.42-.44")	1140mm 44.9"	1720mm 67.7"	1.57 kg (3.45 lb)	Red		
OXY 1160	11.2-11.6 (0.44-.46")	1180mm 46.5"	1760mm 69.3"	1.72 kg (3.78 lb)	Blue	475mm (18.7")	SXB-475
OXY 1170	11.7-11.7 (0.46-.46")	1240mm 48.8"	1840mm 72.4"	1.88 kg (4.14 lb)	Green		
OXY 1200	11.8-12.0 (0.46-.47")	1240mm 48.8"	1840mm 72.4"	1.88 kg (4.14 lb)	Yellow		
OXY 1270	12.1-12.7 (0.48-.5")	1240mm 48.8"	1860mm 73.2"	1.89 kg (4.16 lb)	Black		
OXY 1290	12.8-12.9 (0.5-.51")	1240mm 48.8"	1960mm 77.2"	2.12 kg (4.66 lb)	White		
OXY 1360	13.0-13.6 (0.51-.54")	1320mm 52"	1960mm 77.2"	2.2 kg (4.84 lb)	Red		
OXY 1410	13.7-14.1 (0.54-.56")	1320mm 52"	2000mm 78.7"	2.22 kg (4.84 lb)	Blue		
OXY 1430	14.2-14.3 (0.55-.55")	1320mm 52"	2000mm 78.7"	2.22 kg (4.84 lb)	Green		

MATERIAL:

- * ARMOR RODS – ALUMINUM ALLOY
- * HOUSING – ALUMINUM ALLOY
- * INSERT – EPDM RUBBER

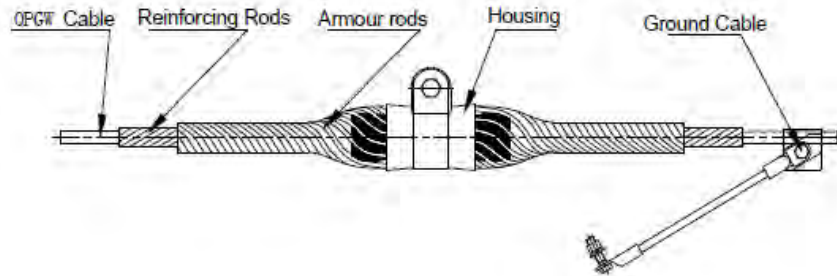
HOLDING STRENGTH NO LESS THAN 18% OF RTS OF CABLE. FOR ANGLES BETWEEN 300 – 600, DOUBLE FORMED GRIP SUSPENSION UNITS ARE RECOMMENDED.

GENERAL ASSEMBLY ITEMS LISTED. OTHER LINKS FOUND IN APPENDIXES.

ADDITIONAL PRODUCTS AVAILABLE, CONTACT US FOR ANY ITEMS NOT LISTED HERE



FORMED GRIP SUSPENSION UNITS FOR OPGW



MODEL.	CABLE DIAMETER mm (in)	OUTER ROD LENGTH mm (in)	REINFORCING ROD LENGTH mm(in)	WEIGHT Kg (Lbs)	COLOR	GENERAL ASSEMBLY	
						LENGTH mm(in)	SPECIFICATION
OXY 1450	14.4-14.5 (0.56-.57")	1440mm 56.7"	2120mm 83.5"	2.61 kg (5.74 lb)	Yellow	475mm (18.7")	SXB-475
OXY 1510	14.6-15.1 (0.57-.59")	1440mm 56.7"	2120mm 83.5"	2.62 kg (5.76 lb)	Black		
OXY 1580	15.2-15.8 (0.60-.62")	1440mm 56.7"	2180mm 85.8"	2.65 kg (5.83 lb)	White		
OXY 1600	15.9-16.0 (0.63-.63")	1620mm 63.8"	2400mm 94.5"	3.05 kg (6.71 lb)	Red	550mm (21.7")	SXB-550
OXY 1690	16.1-16.9 (0.64-.67")	1620mm 63.8"	2400mm 94.5"	3.05 kg (6.71 lb)	Blue		
OXY 1730	17.0-17.3 (0.67-.68")	1620mm 63.8"	2400mm 94.5"	3.2 kg (7.05 lb)	Green		
OXY 1800	17.4-18.0 (0.69-.71")	1620mm 63.8"	2400mm 94.5"	3.3 kg (7.27 lb)	Yellow		
OXY 1840	18.1-18.4 (0.71-.72")	1620mm 63.8"	2400mm 94.5"	3.3 kg (7.27 lb)	Black		
OXY 1880	18.5-18.8 (0.73-.74")	1620mm 63.8"	2400mm 94.5"	3.55 kg (7.83 lb)	White		
OXY 1890	18.9-18.9 (0.74-.74")	1620mm 63.8"	2400mm 94.5"	3.55 kg (7.83 lb)	Red		
OXY 1990	18.9-19.9 (0.75-.78")	1620mm 63.8"	2400mm 94.5"	3.55 kg (7.83 lb)	Blue		

MATERIAL:

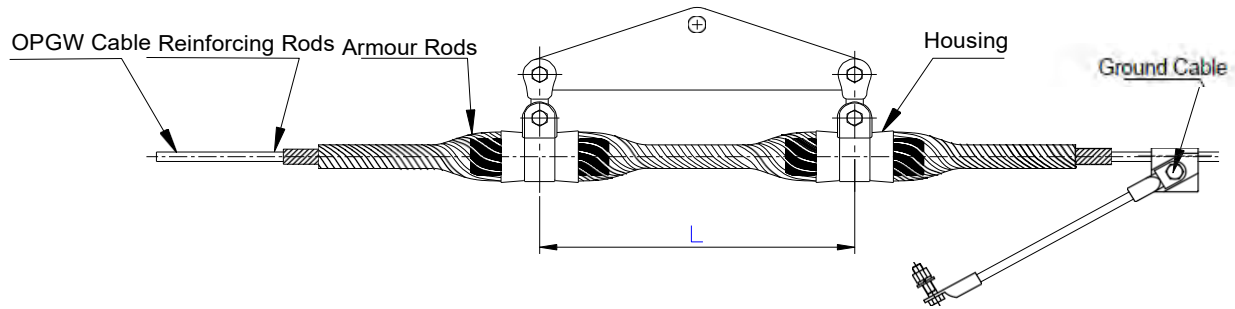
- * ARMOR RODS – ALUMINUM ALLOY
- * HOUSING – ALUMINUM ALLOY
- * INSERT – EPDM RUBBER

HOLDING STRENGTH NO LESS THAN 18% OF RTS OF CABLE. FOR ANGLES BETWEEN 30° – 60°, DOUBLE FORMED GRIP SUSPENSION UNITS ARE RECOMMENDED. GENERAL ASSEMBLY ITEMS LISTED. OTHER LINKS FOUND IN APPENDIXES.

ADDITIONAL PRODUCTS AVAILABLE, CONTACT US FOR ANY ITEMS NOT LISTED HERE



DOUBLE FORMED GRIP SUSPENSION UNITS FOR OPGW



MODEL	CABLE DIAMETER mm (in)	OUTER ROD LENGTH mm (in)	REINFORCING ROD LENGTH mm(in)	WEIGHT Kg (Lbs)	COLOR	GENERAL ASSEMBLY	
						LENGTH mm(in)	SPECIFICATION
OXS 0800	7.4-8.0 (0.29-.31")	1600mm 63"	2100mm 82.7"	1.77 kg (3.89 lb)	Blue	400mm (15.7")	L-1040
OXS 0880	8.1-8.8 (0.32-.35")	1600mm 63"	2100mm 82.7"	1.91 kg (4.20 lb)	Green		
OXS 0960	8.9-9.6 (0.35-.38")	1600mm 63"	2200mm 86.6"	2.03 kg (4.47 lb)	Yellow		
OXS 1010	9.7-10.1 (0.38-.40)	1600mm 63"	2200mm 86.6"	2.03 kg (4.47 lb)	Black		
OXS 1060	10.2-10.6 (0.40-.42")	1600mm 63"	2200mm 86.6"	2.12 kg (4.66 lb)	White		
OXS 1110	10.7-11.1 (0.42-.44")	1600mm 63"	2200mm 86.6"	2.12 kg (4.66 lb)	Red		
OXS 1160	11.2-11.6 (0.44-.46")	1600mm 63"	2200mm 86.6"	2.27 kg (4.99 lb)	Blue	475mm (18.7")	SXB-475
OXS 1170	11.7-11.7 (0.46-.46")	1700mm 67"	2300mm 90.6"	2.49 kg (5.48 lb)	Green		
OXS 1200	11.8-12.0 (0.46-.47")	1700mm 67"	2300mm 90.6"	2.49 kg (5.48 lb)	Yellow		
OXS 1270	12.1-12.7 (0.48-.5")	1700mm 67"	2300mm 90.6"	2.49 kg (5.48 lb)	Black		
OXS 1290	12.8-12.9 (0.5-.51")	1700mm 67"	2400mm 94.5"	2.78 kg (6.11 lb)	White		
OXS 1360	13.0-13.6 (0.51-.54")	1800mm 70.9"	2400mm 94.5"	2.89 kg (6.36 lb)	Red		
OXS 1410	13.7-14.1 (0.54-.56")	1800mm 70.9"	2400mm 94.5"	2.89 kg (6.36 lb)	Blue		
OXS 1430	14.2-14.3 (0.55-.55")	1800mm 70.9"	2400mm 94.5"	2.89 kg (6.36 lb)	Green		

MATERIAL:

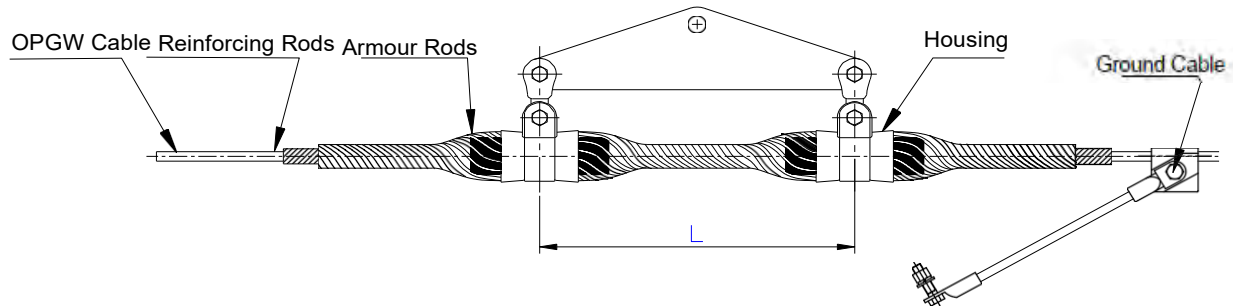
- * ARMOR RODS – ALUMINUM ALLOY
- * HOUSING – ALUMINUM ALLOY
- * INSERT – EPDM RUBBER

HOLDING STRENGTH NO LESS THAN 24% OF RTS OF CABLE. FOR ANGLES BETWEEN 30° – 60°, DOUBLE FORMED GRIP SUSPENSION UNITS ARE RECOMMENDED. GENERAL ASSEMBLY ITEMS LISTED. OTHER LINKS FOUND IN APPENDIXES.

ADDITIONAL PRODUCTS AVAILABLE, CONTACT US FOR ANY ITEMS NOT LISTED HERE



DOUBLE FORMED GRIP SUSPENSION UNITS FOR OPGW



MODEL.	CABLE DIAMETER mm (in)	OUTER ROD LENGTH mm (in)	REINFORCING ROD LENGTH mm(in)	WEIGHT Kg (Lbs)	COLOR	GENERAL ASSEMBLY	
						LENGTH mm(in)	SPECIFICATION
OXS 1450	14.4-14.5 (0.56-.57")	2000mm 78.7"	2600mm 102.4"	3.46 kg (7.63 lb)	Yellow	475mm (18.7")	SXB-475
OXS 1510	14.6-15.1 (0.57-.59")	2000mm 78.7"	2600mm 102.4"	3.46 kg (7.63 lb)	Black		
OXS 1580	15.2-15.8 (0.60-.62")	2000mm 78.7"	2600mm 102.4"	3.46 kg (7.63 lb)	White		
OXS 1600	15.9-16.0 (0.63-.63")	2400mm 94.5"	3100mm 122"	4.27 kg (9.41 lb)	Red	550mm (21.7")	SXB-550
OXS 1690	16.1-16.9 (0.64-.67")	2400mm 94.5"	3100mm 122"	4.27 kg (9.41 lb)	Blue		
OXS 1730	17.0-17.3 (0.67-.68")	2400mm 94.5"	3100mm 122"	4.49 kg (9.90 lb)	Green		
OXS 1800	17.4-18.0 (0.69-.71")	2400mm 94.5"	3100mm 122"	4.62 kg (10.19 lb)	Yellow		
OXS 1840	18.1-18.4 (0.71-.72")	2400mm 94.5"	3100mm 122"	4.62 kg (10.19 lb)	Black		
OXS 1880	18.5-18.8 (0.73-.74")	2400mm 94.5"	3100mm 122"	4.97 kg (10.96 lb)	White		
OXS 1890	18.9-18.9 (0.74-.74")	2400mm 94.5"	3100mm 122"	4.97 kg (10.96 lb)	Red		
OXS 1990	18.9-19.9 (0.75-.78")	2400mm 94.5"	3100mm 122"	4.97 kg (10.96 lb)	Blue		

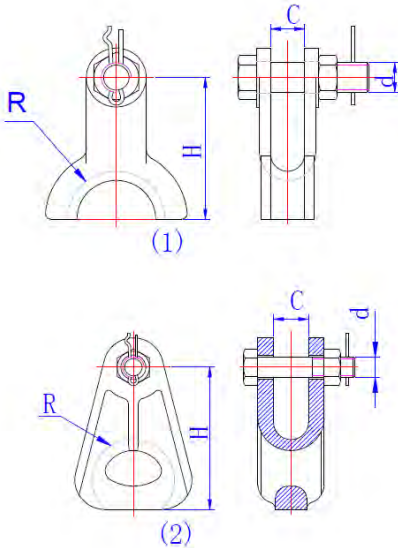
MATERIAL:

- * ARMOR RODS – ALUMINUM ALLOY
- * HOUSING – ALUMINUM ALLOY
- * INSERT – EPDM RUBBER

HOLDING STRENGTH NO LESS THAN 24% OF RTS OF CABLE. FOR ANGLES BETWEEN 30° – 60°, DOUBLE FORMED GRIP SUSPENSION UNITS ARE RECOMMENDED. GENERAL ASSEMBLY ITEMS LISTED. OTHER LINKS FOUND IN APPENDIXES.

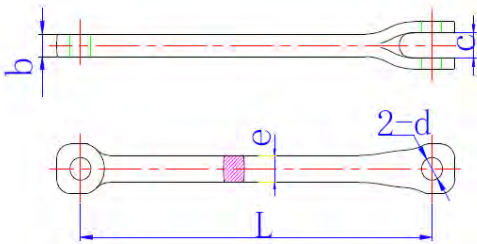
ADDITIONAL PRODUCTS AVAILABLE, CONTACT US FOR ANY ITEMS NOT LISTED HERE

ACCESSORIES



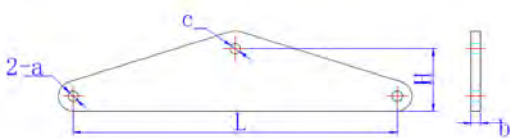
THIMBLE CLEVIS						TABLE 10.1	
MODEL.	FIG.	DIMENSIONS				TENSILE STRENGTH Kn (lb)	WEIGHT Kg (Lbs)
		R	H	C	d		
XH 020	1	50mm 1.97"	80mm 3.14"	17mm 0.67"	16mm 0.63"	30kn (6744lb)	0,5 kg (1.10 lb)
XH 080	2	55mm 2.17"	101mm 3.98"	23mm 0.91"	16mm 0.63"	80 (17985lb)	1.2 kg (2.65 lb)
XH 120	2	60mm 2.36"	116mm 4.57"	26mm 1.02"	18mm 0.71"	120 (26977lb)	1.7 kg (3.75 lb)

* MATERIAL: HOT DIP GALVANIZED DUCTILE IRON PER ASTM A153



EXTENSION LINK						TABLE 10.2	
MODEL.	DIMENSIONS					TENSILE STRENGTH Kn	WEIGHT Kg (Lbs)
	d	b	C	e	L		
TYC 300 080	18mm 0.71"	16mm 0.63"	16mm 0.63"	16mm 0.63"	300mm 11.81"	80 (17985lb)	0.9 kg (1.98 lb)
TYC 300 120	20mm 0.79"	18mm 0.71"	22mm 0.87"	22mm 0.87"	300mm 11.81"	120 (26977lb)	2.0 kg (4.41 lb)

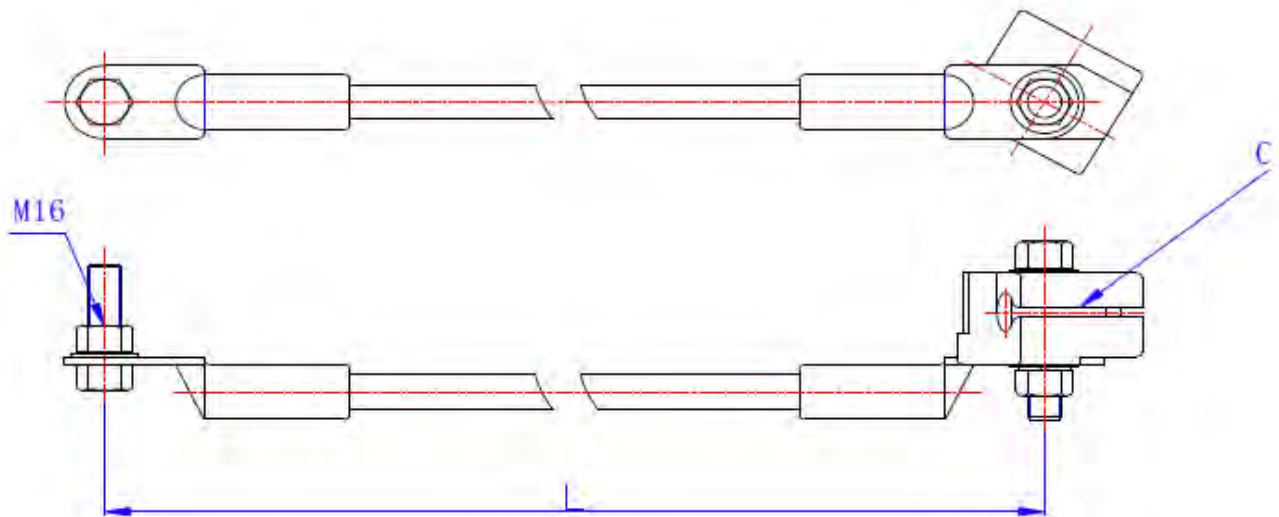
* MATERIAL: HOT GALVANIZED STEEL



LINK BOARD						TABLE 10.3	
MODEL.	DIMENSIONS					TENSILE STRENGTH Kn	WEIGHT Kg (Lbs)
	a	b	C	H	L		
SXB-475	17.5mm 0.69"	16mm 0.63"	19.5mm 0.77"	110mm 4.33"	475mm 18.71"	120 (26977lb)	5.7 kg (12.57 lb)

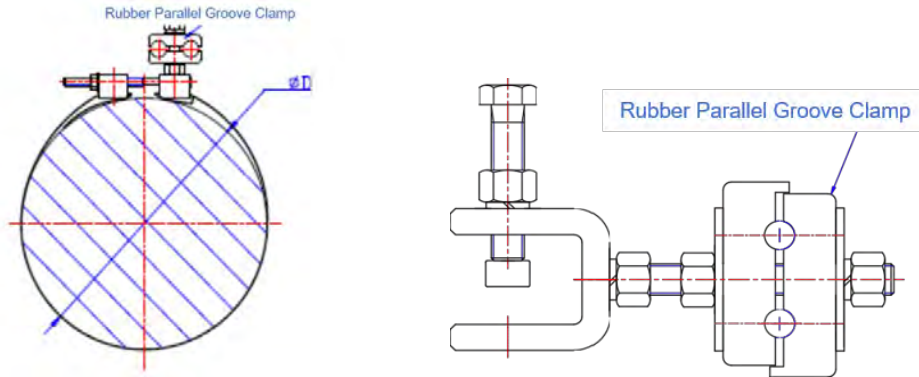
* MATERIAL: HOT GALVANIZED STEEL

ACCESSORIES



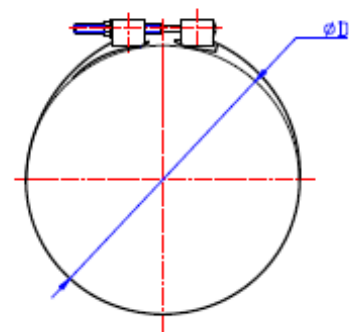
GROUNDING CLAMPS				TABLE 10.4	
MODEL	CONDUCTOR DIAMETER mm (in)	CABLE DIAMETER mm (in)	WEIGHT Kg (Lbs)	GENERAL ASSEMBLY	
				LENGTH mm(in)	CLAMP MODEL
JXJ 70-1500	11.40mm (0.45")	7.8-11.5 (0.31-.45")	0.95 kg (2.09 lb)	1500	C-115
JXJ 70-2000			1.09 kg (2.4 lb)	2000	
JXJ 70-2500			1.23 kg (2.71 lb)	2500	
JXJ 70-3000			1.37 kg (3.02 lb)	3000	
JXJ 95-1500	13.61mm (0.54")	11.6-14.7 (0.46-.57")	1.11 kg (2.45 lb)	1500	C-147
JXJ 95-2000			1.30 kg (2.86 lb)	2000	
JXJ 95-2500			1.49 kg (3.24 lb)	2500	
JXJ 95-3000			1.68 kg (3.70 lb)	3000	
JXJ 120-1500	15.75mm (0.62")	14.8-18.0 (0.58-.71")	1.56 kg (3.44 lb)	1500	C-180
JXJ 120-2000			1.82 kg (4.01 lb)	2000	
JXJ 120-2500			2.09 kg (4.61 lb)	2500	
JXJ 120-3000			2.35 kg (5.18 lb)	3000	

FASTENING CLAMPS



FASTENING CLAMPS				TABLE 11.1
MODEL.	DESCRIPTION	CABLE DIAMETER mm (in)	WEIGHT Kg (Lbs)	REMARKS
TGY 1100-T	POLE FASTENING CLAMPS	9.0-11.1 (0.35-.44")	0.85 kg (1.87 lb)	For ADSS
TGY 1330-T		11.2-13.3 (0.44-.52")	0.85 kg (1.87 lb)	
TGY 1550-T		13.4-15.5 (0.53-.61")	0.85 kg (1.87 lb)	
TGY 1800-T		15.6-18.0 (0.61-.71")	0.85 kg (1.87 lb)	
TGY 115-T	METAL POLE FASTENING CLAMPS	7.0-11.5 (0.28-.45")	0.85 kg (1.87 lb)	For OPGW
TGY 160-T		11.6-16.0 (0.46-.63")	0.85 kg (1.87 lb)	
TGY 200-T		16.1-20.0 (0.64-.79")	0.85 kg (1.87 lb)	
TGY 1100-H*	TOWER FASTENING CLAMPS	9.0-11.1 (0.35-.44")	0.95 kg (2.09 lb)	For ADSS
TGY 1330-H*		11.2-13.3 (0.44-.52")	0.95 kg (2.09 lb)	
TGY 1550-H*		13.4-15.5 (0.53-.61")	0.95 kg (2.09 lb)	
TGY 1800-H*		15.6-18.0 (0.61-.71")	0.95 kg (2.09 lb)	
TGY 115-H*	METAL TOWER FASTENING CLAMPS	7.0-11.5 (0.28-.45")	0.95 kg (2.09 lb)	For OPGW
TGY 160-H*		11.6-16.0 (0.46-.63")	0.95 kg (2.09 lb)	
TGY 200-H*		16.1-20.0 (0.64-.79")	0.95 kg (2.09 lb)	

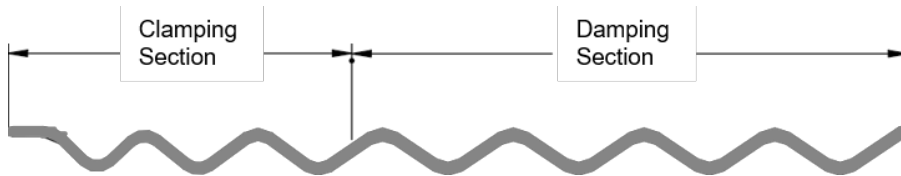
FASTENING CLAMPS STAINLESS STEEL			TABLE 11.2
MODEL.	MAX POLE DIAMETER mm (in)	WEIGHT Kg (Lbs)	
H1	310mm (13.20")	0.45 kg (0.99 lb)	
H2	460mm (18.11")	0.50 kg (1.10 lb)	
H3	310mm (23.62")	0.55 kg (1.21 lb)	
H4	310mm (31.50")	0.60 kg (1.32 lb)	


MATERIAL:

- * RUBBER PARELLEL GROOVE CLAMP – EPDM
- * METAL PARELLEL GROOVE CLAMP – ALUMINUM ALLOY



SPIRAL VIBRATION DAMPER



SPAN.	NUMBER/ SPAN
<100m	0
100-250	2
250-400	4
400-800	6
800-1000	8

MODEL.	CABLE DIAMETER mm (in)	FASTENER LENGTH mm(in)	TOTAL LENGTH mm(in)	WEIGHT Kg (Lbs)
FTL 1170 130	8.3-11.7 (.33-.46)	250mm 9.8"	1300mm 51.18"	0.28 kg (0.62 lb)
ANJ 1050	11.7-14.3 (.46-.56)	250mm 9.8"	1350mm 53.15"	0.30 kg (0.66 lb)
ANJ 1160	14.3-19.3 (.56-.76)	330mm 12.99"	1670mm 65.75"	0.66 kg (1.45 lb)

MATERIAL:

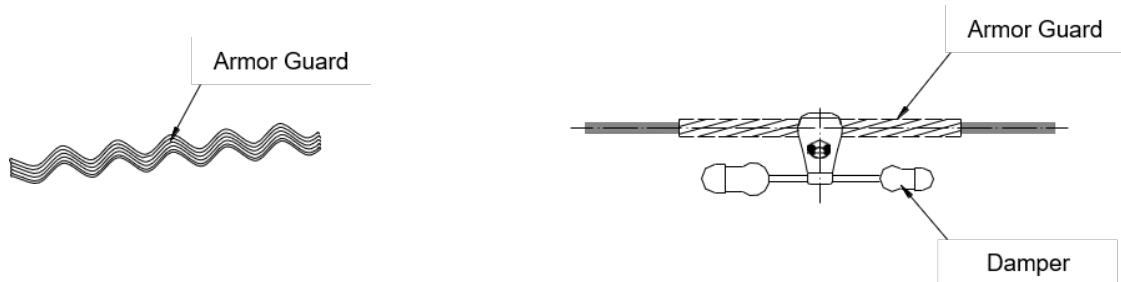
- * HIGH IMPACT PVC

SPIRAL VIBRATION DAMPERS ARE DESIGNED TO CONTROL HIGH FREQUENCY AEOLIAN VIBRATION AND ARE PARTICULARLY EFFECTIVE ON SMALL SIZE EARTHWIRES AND CABLES.

THE DEGREE OF PROTECTION NEEDED ON A SPECIFIC LINE IS DEPENDENT UPON LINE DESIGN, TEMPERATURE, TENSION, EXPOSURE TO WINDFLOW AND VIBRATION HISTORY ON SIMILAR CONSTRUCTION IN THE SAME AREA. THE FOLLOWING RECOMMENDATIONS MAY BE USED AS A GENERAL GUIDE.

- * 100-250M, 2 PER SPAN (ONE ON EACH SIDE OF SUPPORT POINT)
- * 250-400M, 4 PER SPAN (TWO ON EACH SIDE OF SUPPORT POINT)
- * 400-800M, 6 PER SPAN (THREE ON EACH SIDE OF SUPPORT POINT)
- * 800-1000M, 8 PER SPAN (FOUR ON EACH SIDE OF SUPPORT POINT)

STOCKBRIDGE VIBRATION DAMPER & ARMOR GUARDS



THE STOCKBRIDGE VIBRATION DAMPER IS DESIGNED TO CONTROL HIGH FREQUENCY AEOLIAN VIBRATION AND IS SUITABLE FOR OPERATION WITHIN AN ENERGIZED ELECTRIC FIELD. THEY ARE SUPPLIED COMPLETE WITH A SET OF LINE GUARDS FOR DIRECT INSTALLATION OVER THE OPGW OR ADSS OR WITH A SPECIFIC SIZED CLAMP FOR INSTALLATION OVER THE ARMOR RODS OF SUSPENSION AND DEAD END FITTINGS.

THE DEGREE OF PROTECTION NEEDED ON A SPECIFIC LINE IS DEPENDENT UPON LINE DESIGN, TEMPERATURE, TENSION, EXPOSURE TO WINDFLOW AND VIBRATION HISTORY ON SIMILAR CONSTRUCTION IN THE SAME AREA. THE FOLLOWING RECOMMENDATIONS MAY BE USED AS A GENERAL GUIDE.

- * 100-300M, 2 PER SPAN (ONE ON EACH SIDE OF SUPPORT POINT)
- * 300-600M, 4 PER SPAN (TWO ON EACH SIDE OF SUPPORT POINT)
- * 600-900M, 6 PER SPAN (THREE ON EACH SIDE OF SUPPORT POINT)
- * 900-1200M, 8 PER SPAN (FOUR ON EACH SIDE OF SUPPORT POINT)

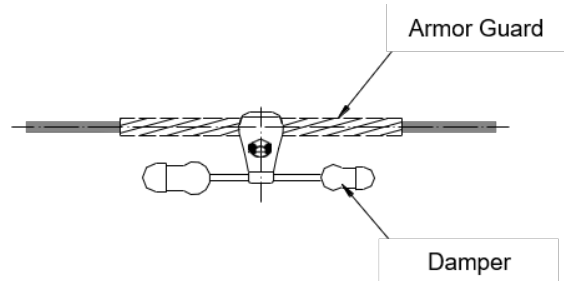
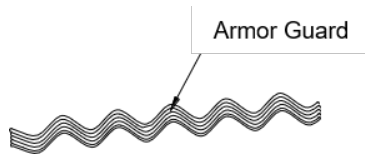
MODEL.	CABLE DIAMETER mm (in)	TOTAL LENGTH mm (in)	CLAMP WIDTH mm(in)	WEIGHT Kg (Lbs)
4D-30-27.0	27.0-22.3 (1.06-.88")	383mm 15.1"	52mm 2.05"	2.5 kg (5.51 lb)
4D-30-23.4	23.4-19.5 (0.92-.77")			
4D-30-20.3	20.3-16.5 (0.80-.65")			
4D-30-18.0	18.0-15.0 (0.71-.59")			
4D-30-16.0	16.0-14.0 (0.63-.55")			
4D-30-14.0	14.0-12.2 (0.55-.48")	330mm 12.99"	52mm 2.05"	1.4 kg (3.09 lb)
4D-30-27.0	27.0-22.3 (1.06-.88")			
4D-30-23.4	23.4-19.5 (0.92-.77")			
4D-30-20.3	20.3-16.5 (0.80-.65")			
4D-30-18.0	18.0-15.0 (0.71-.59")			
4D-30-16.0	16.0-14.0 (0.63-.55")			
4D-30-14.0	14.0-12.2 (0.55-.48")			
4D-30-27.0	27.0-22.3 (1.06-.88")			

MATERIAL:

- * ARMOR GUARDS – ALUMINUM ALLOY
- * SVD – HIGH IMPACT PVC



STOCKBRIDGE VIBRATION DAMPER & ARMOR GUARDS



MODEL.	CABLE DIAMETER mm (in)	TOTAL LENGTH mm (in)	WEIGHT Kg (Lbs)
TFH 0800	7.4-8.0 (0.29-.31")	400mm 15.75"	0.12 kg (0.26 lb)
TFH 0880	8.1-8.8 (0.32-.35")		
TFH 0960	9.0-9.6 (0.35-.38")	450mm 17.72"	0.15 kg (0.33 lb)
TFH 1010	9.7-10.1 (0.38-.40)		
TFH 1060	10.2-10.6 (0.40-.42")		
TFH 1110	10.7-11.1 (0.42-.44")		
TFH 1160	11.2-11.6 (0.44-.46")	500mm 12.99"	0.21 kg (0.46 lb)
TFH 1170	11.7-11.7 (0.46-.46")		
TFH 1200	11.8-12.0 (0.46-.47")		
TFH 1270	12.1-12.7 (0.48-.5")		
TFH 1290	12.8-12.9 (0.5-.51")		
TFH 1360	13.0-13.6 (0.51-.54")		
		550mm 21.65"	0.23 kg (0.51 lb)
		550mm 21.65"	0.25 kg (0.55 lb)

MODEL.	CABLE DIAMETER mm (in)	TOTAL LENGTH mm (in)	WEIGHT Kg (Lbs)
TFH 1410	13.7-14.1 (0.54-.56")	550mm 21.65"	0.25 kg (0.55 lb)
TFH 1430	14.2-14.3 (0.55-.55")		
TFH 1450	14.4-14.5 (0.56-.57")		
TFH 1510	14.6-15.1 (0.57-.59")	600mm 23.62"	0.28 kg (0.62 lb)
TFH 1580	15.2-15.8 (0.60-.62")		
TFH 1600	15.9-16.0 (0.63-.63")		
TFH 1690	16.1-16.9 (0.64-.67")	650mm 25.59"	0.30 kg (0.66 lb)
TFH 1730	17.0-17.3 (0.67-.68")		
TFH 1800	17.4-18.0 (0.69-.71")		
TFH 1840	18.1-18.4 (0.71-.72")		
TFH 1880	18.5-18.8 (0.73-.74")		0.33 kg (0.73 lb)
			0.38 kg (0.84 lb)
MATERIAL: ALUMINUM ALLOY			

DESIGNED TO CONTROL HIGH FREQUENCY AEOLIAN VIBRATION AND IS SUITABLE FOR OPERATION WITHIN AN ENERGIZED ELECTRIC FIELD.

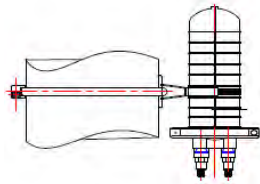
SUPPLIED COMPLETE WITH A SET OF LINE GUARDS FOR DIRECT INSTALLATION OVER THE OPGW OR ADSS OR WITH A SPECIFIC SIZED CLAMP FOR INSTALLATION OVER THE ARMOUR RODS OF SUSPENSION AND DEAD END FITTINGS.

DEGREE OF PROTECTION NEEDED IS DEPENDENT UPON LINE DESIGN, TEMPERATURE, TENSION, EXPOSURE TO WINDFLOW AND VIBRATION HISTORY ON SIMILAR CONSTRUCTION IN THE SAME AREA. THE FOLLOWING RECOMMENDATIONS MAY BE USED AS A GENERAL GUIDE.

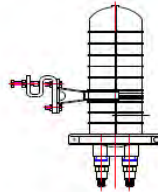
- * 100-300M, 2 PER SPAN (ONE ON EACH SIDE OF SUPPORT POINT)
- * 300-600M, 4 PER SPAN (TWO ON EACH SIDE OF SUPPORT POINT)
- * 600-900M, 6 PER SPAN (THREE ON EACH SIDE OF SUPPORT POINT)
- * 900-1200M, 8 PER SPAN (FOUR ON EACH SIDE OF SUPPORT POINT)

JOINT BOXES

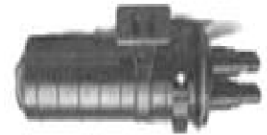
PLASTIC JOINT BOX FOR ADSS



The Plastic Joint Box for pole ADSS

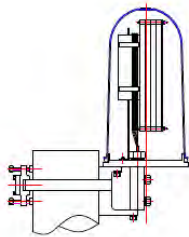


The Plastic Joint Box for tower ADSS

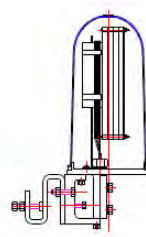


THE PLASTIC JOINT BOX FOR ADSS FEATURES DURABLE HIGH-DENSITY THERMOPLASTIC SHELLS THAT WEIGH LESS THAN THE METAL COUNTERPARTS. FOR LOOSE TUBE BUFFER TYPE FIBER, IT HANDLES UP TO 96 SPLICES. IT INCLUDES 2 PORTS TYPE AND 4 PORTS TYPE FOR SELECTION.

METAL JOINT BOX FOR OPGW AND ADSS



The metal Joint Box for pole



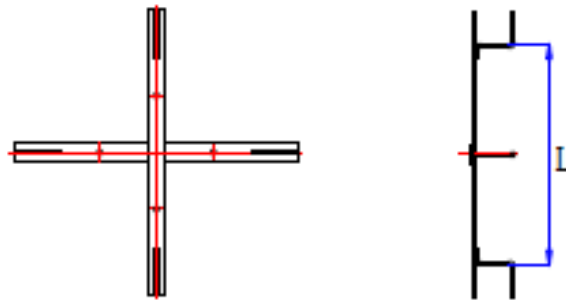
The metal Joint Box for tower



THE METAL JOINT BOX FOR OPGW AND ADSS FEATURES CORROSION-RESISTANT ALUMINUM ALLOY SHELLS. FOR LOOSE TUBE BUFFER TYPE FIBER, IT CAN MANAGE UP TO 114 FIBER SPLICES. THE BOX ALLOWS FUTURE EXPANSION OR "GROWTH" INTO THE BOX WITH MINIMAL COST OR DISRUPTION TO THE EXISTING FIBERS. IT INCLUDES 2 PORTS TYPE AND 3 PORTS TYPE, 4 PORTS TYPE, 5 PORTS TYPE FOR SELECTION.



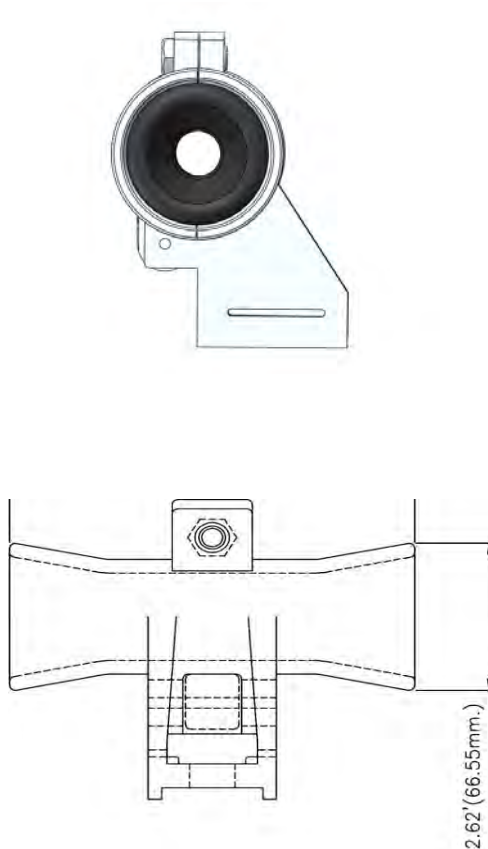
CABLE STORAGE ASSEMBLIES



THE CABLE STORAGE ASSEMBLIES PROVIDE A METHOD FOR STORING ADSS OR OPGW CABLE ON WOOD POLES, METAL POLES, CONCRETE POLES, AND LATTICE TOWERS. THE BASIC KITS CAN BE COMBINED INTO VARIOUS CONFIGURATIONS TO SUIT YOUR SPECIFIC APPLICATION.

AVAILABLE LENGTHS: 660mm,1000mm,1200mm

TANGENT SUPPORT CLAMPS



CATALOG NUMBER.	CABLE RANGE mm (in)
TSC 0325	7.0-8.2 (0.28-.32")
TSC 0375	8.3-9.5 (0.33-.37")
TSC 0425	9.6-10.7 (0.38-.42")
TSC 0475	10.8-12.0 (0.43-.47")
TSC 0525	12.1-13.3 (0.48-.52")
TSC 0575	13.4-14.6 (0.53-.57")
TSC 0625	14.7-15.8 (0.58-.62")
TSC 0675	15.9-17.1 (0.63-.67")
TSC 0725	17.2-18.4 (0.68-.72")
TSC 0775	18.5-19.6 (0.73-.77")
TSC 0825	19.7-21.0 (0.78-.82")
TSC 0875	21.1-22.2 (0.83-.87")
TSC 0925	22.3-23.5 (0.88-.92")
TSC 0975	23.6-24.7 (0.93-.97")
TSC 1025	24.8-26.0 (0.98-1.02")
TSC 1075	26.1-27.2 (1.03-1.07")
TSC 1125	27.3-28.7 (1.08-1.12")

TANGENT SUPPORT CLAMPS ARE SUITABLE FOR USE WITH SPAN LENGTHS UP TO 600'. WITH A MAXIMUM LINE ANGLE OF 20°. THE CLAMP MAY BE USED AS A STRINGING DEVICE BY REMOVING THE INSERTS, WITH APPROVAL FROM FIBER OPTIC CABLE SUPPLIER.

RECOMMENDED TORQUE WITH 3/8" BOLT IS 15LBFT (20.3Nm)

MATERIAL:

- * MAIN BODY -- AL ALLOY
- * INSERT – EPDM RUBBER
- * BOLTS/NUTS – STAINLESS STEEL