



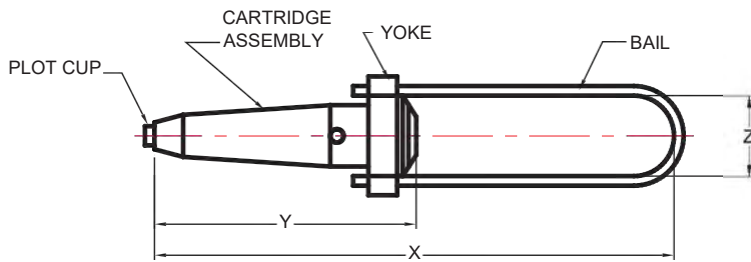
# INDEX

## SECTION 1 - AUTOMATIC CONNECTORS

GUY DEADENDS AND GUY SPLICES UNIVERSAL GRADE STRAND -----	1-1
GUY DEADENDS AND GUY SPLICES ALL GRADE STRAND -----	1-2
DEADENDS , AUTOMATIC DEADEND -----	1-2A
AUTOMATIC ALUMINUM LINE SPLICES -----	1-3
SERVICE WEDGE CLAMPS -----	1-4

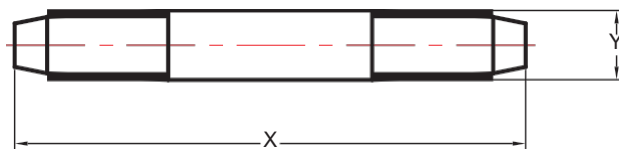


# GUY DEADENDS AND GUY SPLICES UNIVERSAL GRADE STRAND



ITEM NO.	BAIL TYPE	DIMENSIONS (INCHES)			WIRE RANGE		WT/100
		X	Y	Z	INCHES	MM	
AGDE-316U	A	9.69	4.8	1.57	.145-.215	3.7-5.5	42
AGDE-14U	A	9.9	4.76	1.63	.215-.270	5.5-6.7	62
AGDE-14UL	A	13.52	4.76	1.63	.215-.270	5.5-6.7	64
AGDE-516U	A	10.45	5.38	1.73	.270-.315	6.7-8	84
AGDE-516UL	A	15.71	5.38	1.79	.270-.315	6.7-8	102
AGDE-38U	A	13.31	6.43	2	.325-.392	8.3-10	132
AGDE-38UL	A	16.97	6.43	2.12	.325-.392	8.3-10	154
AGDE-716U	A	14.61	6.85	2.18	.392-.458	10.0-11.6	172
AGDE-716UL	A	18.23	6.85	2.18	.392-.458	10.0-11.6	218
AGDE-12U	A	16.69	7.09	2.18	.455-.520	11.6-13.2	204

ABOVE CATALOG NUMBERS REPRESENT STANDARD BAIL SIZE.  
OTHER SIZES ARE AVAILABLE UPON REQUEST.

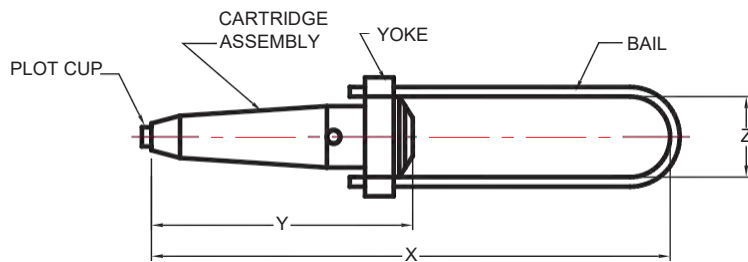


ITEM NO.	TYPE	DIMENSIONS (INCHES)		WIRE RANGE		WT/100
		X	Y	INCHES	MM	
AGS-316U	LINK	7.5	1.03	.145-.215	3.7-5.5	46
AGS-14U	LINK	7.62	1.13	.215-.270	5.5-6.7	60
AGS-516U	LINK	9.28	1.26	.270-.315	6.7-8	84
AGS-38U	LINK	10.6	1.45	.325-.392	8.3-10	132
AGS-716U	LINK	10.6	1.59	.392-.458	10.0-11.6	160
AGS-12U	LINK	10.8	1.7	.455-.520	11.6-13.2	192

FEATURES: MINIMUM HOLDING STRENGTH IS 90% RBS OF WIRE SPECIFIED.

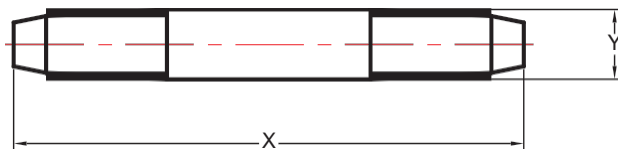


# GUY DEADENDS AND GUY SPLICES ALL GRADE STRAND



ITEM NO.	BAIL TYPE	DIMENSIONS (INCHES)			WIRE RANGE		TENSILE STRENGTH		WT/100
		X	Y	Z	INCHES	MM	KGS	LBS	
AGDE-316	A	9.08	3	1.6	.185-.193	4.7-4.9	2000	4400	20
AGDE-14	A	9.2	4.02	1.48	.240-.253	6.1-6.5	2700	6000	44
AGDE-14L	A	12.83	4.02	1.48	.240-.253	6.1-6.5	2700	6000	43
AGDE-516	A	9.36	4.47	1.48	.310-.335	7.8-8.5	4500	10080	72
AGDE-516L	A	13.5	4.47	1.48	.310-.335	7.8-8.5	4500	10080	78
AGDE-38	A	11.46	5.11	1.63	.360-.405	9.1-10.3	6300	13860	104
AGDE-38L	A	17.01	5.11	1.65	.360-.405	9.1-10.3	6300	13860	130
AGDE-716	A	14.8	6.69	2.13	.413-.449	10.5-11.4	8600	18720	176

ABOVE CATALOG NUMBERS REPRESENT STANDARD BAIL SIZE.  
OTHER SIZES ARE AVAILABLE UPON REQUEST.



ITEM NO.	TYPE	DIMENSIONS (INCHES)		WIRE RANGE		TENSILE STRENGTH		WT/100
		X	Y	INCHES	MM	KGS	LBS	
AGS-316	LINK	5.2	0.7	.185-.193	4.7-4.9	2000	4400	16
AGS-14	LINK	6.42	0.91	.240-.253	6.1-6.5	2700	6000	30
AGS-516	LINK	7.36	1.11	.310-.335	7.8-8.5	4500	10080	62
AGS-38	LINK	8.27	1.29	.360-.405	9.1-10.3	6300	13860	88
AGS-716	LINK	10.8	1.59	.413-.449	10.5-11.4	8600	18720	155

FEATURES:MINIMUM HOLDING STRENGTH IS 90% RBS OF WIRE SPECIFIED.



# DEADENDS, AUTOMATIC ALUMINUM

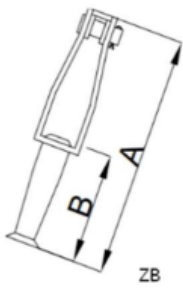


Figure 1  
Z Bail Stainless Steel Formed Wire

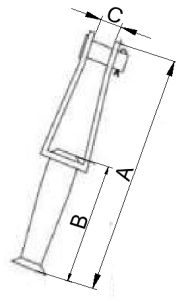


Figure 2  
Clevis Bail Galvanized Steel

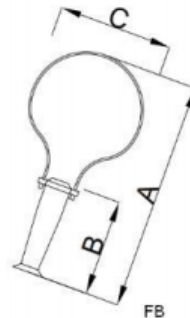


Figure 3  
Flex Bail-Braided Stainless

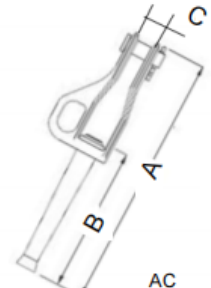
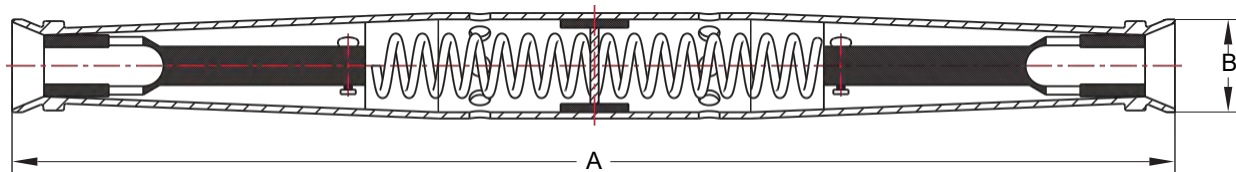


Figure 4  
Cast Al Clevis

MODEL	FIG.	Dimensions In (mm)			Conductor Size			Conductor O.D.	Color
		A	B	c	ACSR ASTM-B232	AAAC ASTM	AAC ASTM-B231	Min-Max In(mm)	
GD4042ZB	1	14(355.6)	8(203.2)	—	4-2	4-2	4-2	.220-.320(5.58-8.13)	Red-Orange
GD4076ZB	1	14.2(360.7)	8.2(208.28)	—	1/0, 2/0	1/0, 2/0	1/0, 2/0	.355-.470(9.01-11.94)	Gray-Yellow
GD4098ZB	1	21.6(548.0)	12(304.8)	—	3/0,4/0	3/0,4/0	3/0,4/0	.464-.595(11.79-15.11)	Pink-Blank
GD411-10ZB	1	21(534.0)	12(304.8)	—	266.8(18/1)-336.4(18/1)	312.8-394.5	*336 4- *397.5**336 4	.603-.724(15.31-18.39)	Green-Brown
GD412ZB	1	21.1(535.9)	12(304.8)	—	397.5(18/1)	465.4	477	.720-.795(18.28-20.19)	Blue
GD413ZB	1	21.2(538.5)	12(304.8)	—	477(18/1)	559.5	*556 5,500	.780-.858(19.81-21.80)	White
GD4042CB	2	14.2(360.7)	8(203.2)	1.6(40.6)	4-2	4-2	4-2	.220-.320(5.58-8.13)	Red-Orange
GD4076CB	2	14.2(360.7)	8.2(208.28)	1.6(40.6)	1/0, 2/0	1/0, 2/0	1/0, 2/0	.355-.470(9.01-11.94)	Gray-Yellow
GD4098CB	2	19.5(495.0)	12(304.8)	2(50.8)	3/0,4/0	3/0,4/0	3/0,4/0	.464-.595(11.79-15.11)	Pink-Blank
GD411-10CB	2	19.3(490.0)	12(304.8)	2.2(55.8)	266.8(18/1)-336.4(18/1)	312.8-394.5	*336 4- *397.5**336 4	.603-.724(15.31-18.39)	Green-Brown
GD412CB	2	19.3(490.0)	12(304.8)	2.2(55.8)	397.5(18/1)	465.4	477	.720-.795(18.28-20.19)	Blue
GD413CB	2	19.3(490.0)	12(304.8)	2.2(55.8)	477(18/1)	559.5	*556 5,500	.780-.858(19.81-21.80)	White
GD4042FB	3	16(406.4)	8(203.2)	4(100)	4-2	4-2	4-2	.220-.320(5.58-8.13)	Red-Orange
GD4076FB	3	16(406.4)	8.2(208.28)	4.5(115)	1/0, 2/0	1/0, 2/0	1/0, 2/0	.355-.470(9.01-11.94)	Gray-Yellow
GD4098FB	3	23.5(598.0)	12(304.8)	6.2(157)	3/0,4/0	3/0,4/0	3/0,4/0	.464-.595(11.79-15.11)	Pink-Blank
GD411-10FB	3	23.4(594.4)	12(304.8)	6.2(157)	266.8(18/1)-336.4(18/1)	312.8-394.5	*336 4- *397.5**336 4	.603-.724(15.31-18.39)	Green-Brown
GD412FB	3	23.7(602.0)	12(304.8)	6.2(157)	397.5(18/1)	465.4	477	.720-.795(18.28-20.19)	Blue
GD413FB	3	23.5(596.9)	12(304.8)	6.2(157)	477(18/1)	559.5	*556 5,500	.780-.858(19.81-21.80)	White
GD4042AC	4	14.2(360.7)	8(203.2)	—	4-2	4-2	4-2	.220-.320(5.58-8.13)	Red-Orange

FEATURES: FULL TENSION CLASS A CONNECTORS. 95% OF BREAKING STRENGTH. FASTEST METHOD TO DEADEND ACSR, AAAC AND AAC CONDUCTORS.  
 MATERIALS: ALUMINUM ALLOY SHELL AND INHIBITOR & ALUMINUM JAWS. AVAILABLE WITH GALV STEEL STIRRUP CLEVIS OR STAINLESS STEEL Z BAIL.

# AUTOMATIC ALUMINUM LINE SPLICES



Catalog Number	CONDUCTOR RANGE			Conductor Diameter Range	Strand Color Guide	APPROXIMATE DIMENSIONS	
	ACSR ASTM-B232	AAAC ASTM- B399	AAC ASTM-B231			A	B
ALLS-4	#4	#4	#4	0.225-0.250	Orange	13.75	0.834
ALLS-42	#2 & #4	#2 & #4	#2 & #4	0.220-0.320	Red-Orange	13.75	0.834
ALLS-10	1/0	1/0	1/0	0.355-0.400	Yellow	16.25	1.15
ALLS-20	2/0	2/0	2/0	0.400-0.470	Gray	16.25	1.15
ALLS-1020	1/0 & 2/0	1/0 & 2/0	1/0 & 2/0	0.355-0.470	Gray-Yellow	16.25	1.15
ALLS-30	3/0	3/0	3/0	0.450-0.530	Black	22.00	1.74
ALLS-40	4/0	4/0	4/0	0.505-0.595	Pink	22.00	1.74
ALLS-3040	3/0 & 4/0	3/0 & 4/0	3/0 & 4/0	0.450-0.595	Black-Pink	22.00	1.74
ALLS-266-336	266.8 (18/1)	312.8	336.4	0.603-0.666	Brown	18.75	1.5
ALLS-336-397	336.4 (18/1)	394.5	397.5, 336.4	0.659-0.724	Green	20.25	1.75
ALLS-266-397	266.8 (18/1) 336.4 (18/1)	226.8, 336.4	226.8, 336.4 & 397.5	0.603-0.724	Green/Brown	20.25	1.75
ALLS-397-477	397.5 (18/1)	465.4	477	0.720-0.795	Blue	22	2.0
ALLS-477-556	477 (18/1)	559.5	556.5, 500	0.780-0.858	White	24	2.1

ALL OUR SPLICES ARE RATED TO HOLD A MINIMUM OF 95% OF THE RATED BREAKING STRENGTH OF THE CONDUCTOR.

#### FEATURES:

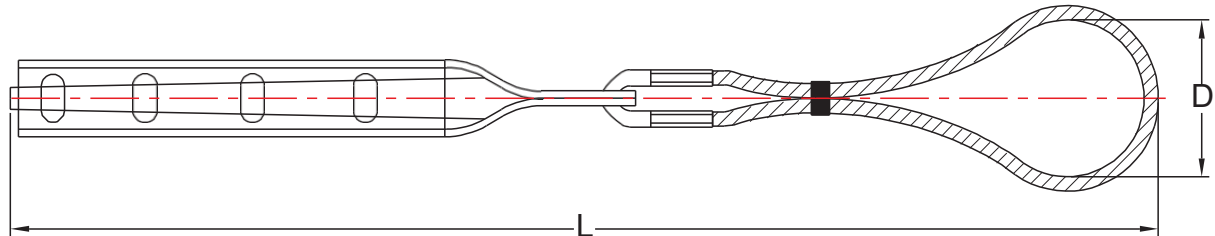
- \* FACTORY INSTALLED INHIBITOR
- \* ANSI C119.4 FULL TENSION CLASS A CONNECTOR
- \* COLOR CODED END CAPS FOR EASY CONDUCTOR IDENTIFICATION
- \* EASY AND FAST TO SPLICE OVERHEAD CONDUCTORS

#### MATERIAL:

- \* HIGH STRENGTH ALUMINUM ALLOY TUBING
- \* INSIDE JAWS ARE ALUMINUM ALLOY



# SERVICE WEDGE CLAMPS



CATALOG NUMBER	WIRE RANGE ACSR	WIRE RANGE ALUMINUM	WIRE RANGE AAAC	TOTAL LENGTH INCHES	INSIDE BALL DIMENSIONS INCHES
SWC62-1	#6-#2	6SOL.-1STR	#4-#1/0	12"	2 3/8"
SWC20-1	#6-#2	6SOL.-1STR	#4-#1/0	12 1/2"	2 3/8"
SWC40-1	#6-#2	6SOL.-1STR	#2/0-#4/0	12 3/4"	2 3/8"

THE ABOVE CLAMPS ARE USED PRIMARILY IN SERVICE DROP APPLICATIONS. WHERE STRAIN RELIEF IS NEEDED. THEN CAN ALSO BE USED FOR DEADENDING DROP WIRE AS WELL AS ADJUSTING THE SAG IN DROP WIRES.

THE ABOVE SERVICE WEDGE CLAMPS ARE FURNISHED WITH A RIGID STAINLESS STEEL BAIL. FLEXIBLE BAILS ARE ALSO AVAILABLE JUST ADD THE SUFFIX "F" TO OUR PART NUMBER. (EXAMPLE:SWC62-1F)